

## TECHNICAL SPECIFICATIONS

SHELLS	: TIN PLATED STEEL
CONTACTS DIA ON ACTIVE AREA	: Ø1 MM.
CONTACTS MATERIAL	: COPPER ALLOY
CONTACT PLATING	: GXT / GOLD OVER NICKEL (ACTIVE ZONE)
	: TIN OVER NICKEL (TERMINATION ZONE)
FOR LEAD FREE PLATING	: 2µ MIN. TIN TOP OVER 1.27µ MIN. NICKEL UNDER PLATE (ON TERMINATION ZONE)
INSULATOR MATERIAL	: SELF EXTINGUISHING THERMOPLASTIC-TO UL CLASS 94 V0
	: THE HOUSING WILL WITHSTAND EXPOSURE TO 260-265°C IF WE USE PROTECTIVE ADHESIVE (Kapton or Teflon) OR PROTECTIVE METALLIC DEVICE
OPERATING TEMPERATURE	: -55°C +125°C
OPERATING CURRENT	: 5 A PER CONTACT
CONTACT RESISTANCE	: ≤25mΩ
INSULATION RESISTANCE	: ≥5000 MΩ
MAXIMUM VOLTAGE	: 1000 V <sub>rms</sub>
MECHANICAL ENDURANCE	: 500 MATINGS MIN.FOR CODE 65 200 MATINGS MIN.FOR CODE 64
DAMP HEAT	: 21 DAYS.

## ORDERING INFORMATION

SERIES	D B V 25 P 5 64 C T X XXX LF	LEAD FREE
SHELL SIZE	E A B C D	SPECIAL CODES
OPTIONS		DIMPLES
	BLANK-STANDARD	X-ON MALE CONNECTORS ONLY
	V-RVTD HEX, FEM SCREW LOCK (UNC4-40)	SHELL PLATING
	L-CLINCH NUT (M3)	BLANK-ZINC
	O-CLINCH NUT (UNC4-40)	T-STD, TIN LEAD Over Cu
	N-SCREW (M3) WITH NUT, WASHER & BRACKET	OPTIONS
	T-SCREW (UNC) WITH NUT, WASHER & BRACKET	BLANK - STANDARD
		G - HARPOON
		M - METAL BRACKET
		C - WITHOUT BRACKET
NO.OF CONTACTS	09,15,25,37,50	CONTACT PLATING
CONTACTS		64 - 200 MATING CYCLES
P - PIN		65 - 500 MATING CYCLES
S - SOCKET		TERMINATION TYPE
		5-ANGLED SPILL 2.54mm BETWEEN ROWS
		8-ANGLED SPILL 2.84mm BETWEEN ROWS

## NOTES:

- 1) GENERAL VIEW SHOWN IS OPTION C
- 2) INSIDE DIMENSION OF MALE AND OUTSIDE DIMENSION OF THE FEMALE CONNECTOR

"This LF product meets European Union Directives and other country regulations as described in GS-47-0004."

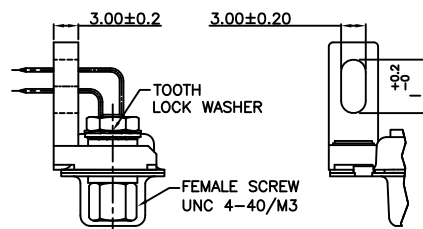
The housing will withstand exposure to 260°C peak temperature for 3.5 seconds in a wave solder application with a 1.6mm minimum thick circuit board.

Packaging as per GS-14-920

## SCREW LOCK WITH NUT, WASHER &amp; PLASTIC BRACKET

OPTION: - N (FEMALE SCREW M3)

OPTION: - T (FEMALE SCREW UNC4-40)

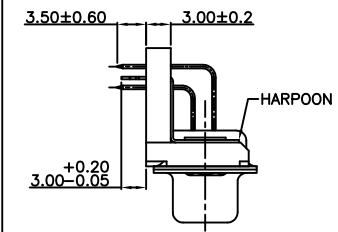


I = 6.5 (9-37 POS)  
I = 7.4 (50 POS)

## BRACKET DETAILS

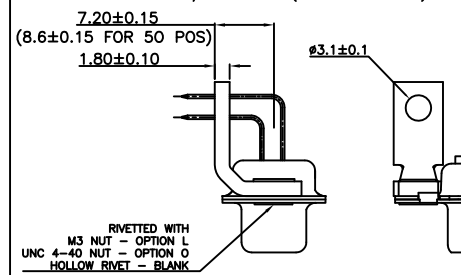
## HARPOON WITH PLASTIC BRACKET

OPTION: - G



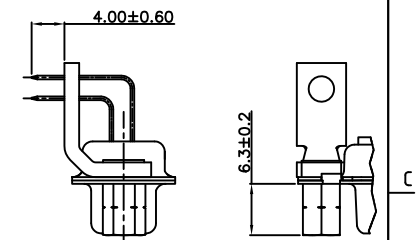
## VIEW WITH RIVET &amp; METAL BRACKET

OPTION: - L/O WITH M (METAL BRACKET)



## VIEW WITH RIVETED FEMALE SCREW &amp; METAL BRACKET

OPTION: - V WITH M (METAL BRACKET)



mat'l. code	-	surface	ISO 1302	tolerance	ISO 406	ISO 1101	projection	product family	D-SUB
ltr	ecn no	dr	date	tolerances unless otherwise specified	linear	±0.1	MM	title	D-SUB A/S CONNECTOR WITH FOOTPRINT 10.4 mm (WITH ASSEMBLY OPTIONS)
G	106-0074	GVJ	2006/06/08	angles	linear	±0.1	MM	dwg no	sheet 1 of 1
H	108-0139	MRA	2008/10/13	0°±2'	linear	±0.1	MM	size	A3
J	109-0075	MRA	2009/05/14	0°±2'	linear	±0.1	MM	type	Product Customer Drawing
K	111-0003	MRA	2011/01/08	dr	MINI K VANDANATH	1999/03/20			
L	ELX-I-15429	MP	2013/08/06	engr	MITHUN PAUL	2013/08/06			
M	ELX-I-20760	MP	2015/05/02	chr	ALIAS BABU	2013/08/06			
				appd	BIJU K PAUL	2013/08/06			
sheet index	revision	M							
	sheet	1							

# Mouser Electronics

Authorized Distributor

Click to View Pricing, Inventory, Delivery & Lifecycle Information:

[FCI / Amphenol:](#)

[DA15S565CTLF](#) [DBL25P565MTXLF](#) [DBL25P865MTXLF](#) [DBL25S865MTLF](#)