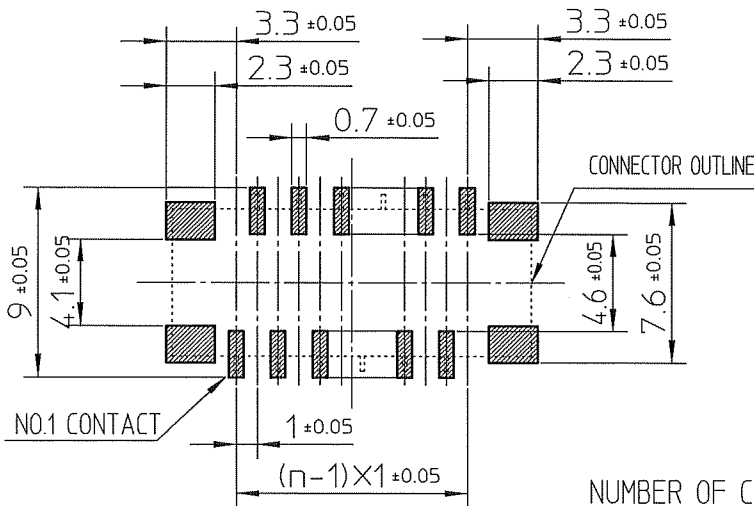


| PT. NO. | PARTS NAME | MATERIAL | Q'TY | NOTE |
|---------|----------------|--|------|------------------------|
| 1 | HOUSING | GLASS FILLED THERMOPLASTIC RATED.(UL94V-0) | 1 | COLOR:BRACK |
| 2 | CONTACT | PHOSPHOR BRONZE | n | PLATING:TIN(LEAD FREE) |
| 3 | MOUNTING PLATE | BRASS | 2 | PLATING:TIN(LEAD FREE) |

RECOMMENDED PC BOARD LAYOUT
(COMPONENT SIDE)

n:NO. OF CONTACTS

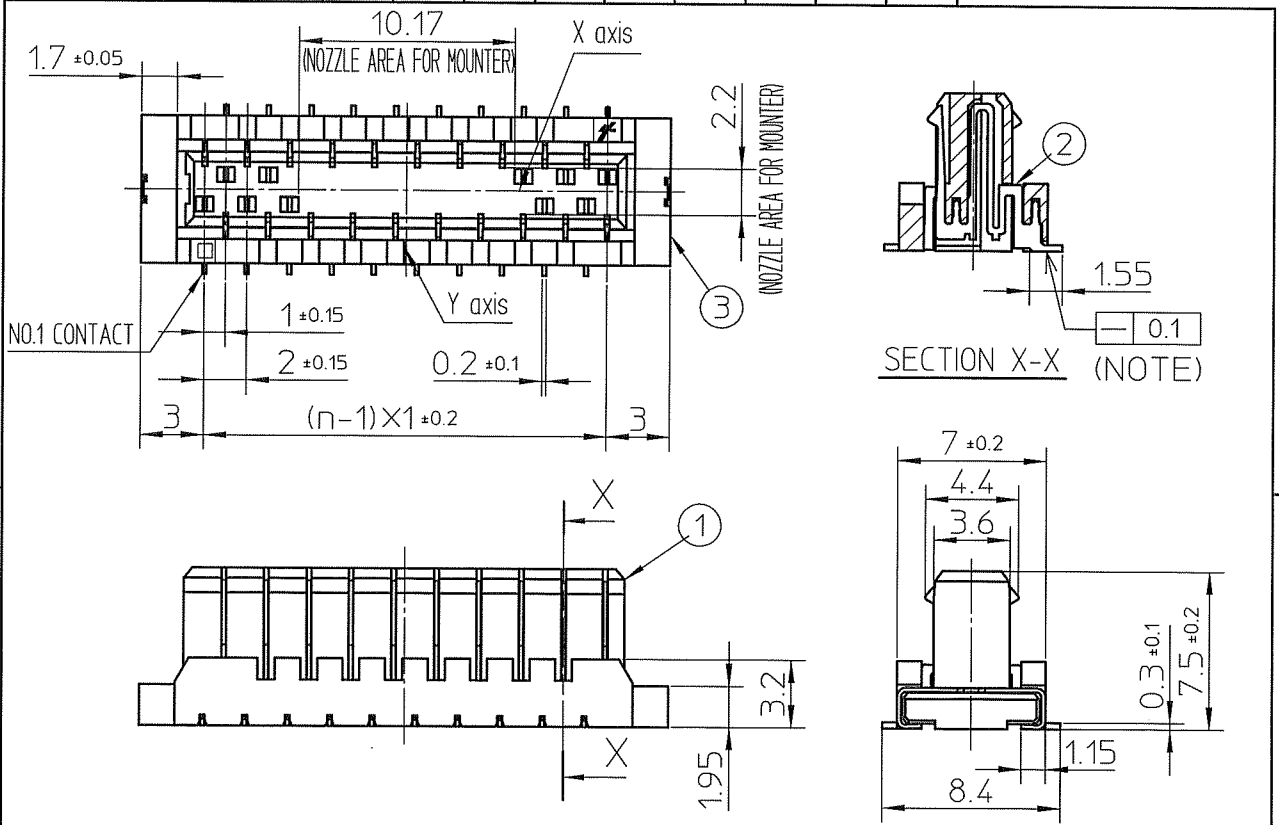


NOTE

- 1.This connector is symmetric for X,Y axis. As a result, It is possible to locate in emboss cavity even if rotated condition.
- 2.Flatness for contact terminal and mounting plate must be within 0.1.
- 3.This product meets European Union Directives and other country regulations as described in GS-22-008.

NUMBER OF CONTACTS : 10 TO 16 , ONLY EVEN POS.

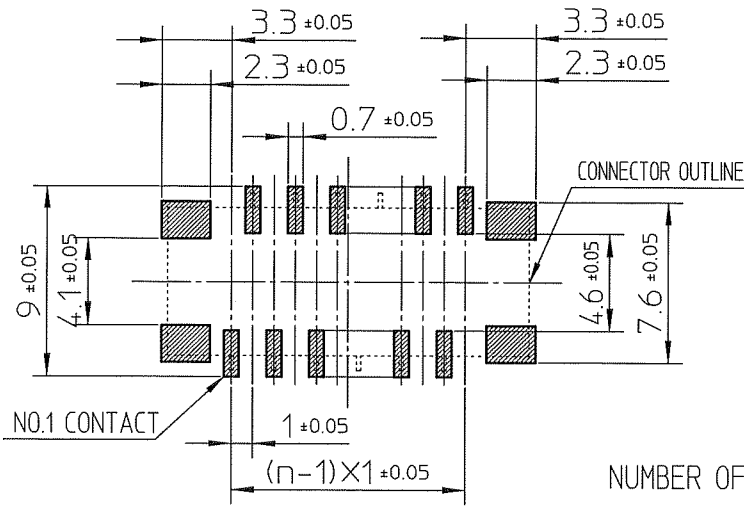
| | | | | | | | | | | |
|-------------|----------------|-----------------------|------------|---------------------------------------|-----------|------------|--|---|----------------------------------|-------|
| mat'l. code | | surface ISO 1302 ✓ | | tolerance ISO 406 ISO 1101 | | projection | | product family 590F | | |
| ltr | ecn no | dr | date | tolerances unless otherwise specified | | | | title FLOATING BOARD TO BOARD PLUG CONNECTOR (LEAD FREE) (CAT.No. BTFW_P-3SSTLF) | | |
| A | J06-0146 | M.K | Apr.11,'06 | angles | linear | | | | | ± 0.3 |
| B | J07-0021 | M.K | Jan.15,'07 | | | scale | | dwg no JSA 96633 | | |
| | | | | dr | K.Higuchi | Jan.15,'07 | | | sheet 1 of 2 | |
| | | | | enr | M.Koga | Jan.15,'07 | | | size A4 | |
| | | | | chr | K.Higuchi | Jan.15,'07 | | | type Product Customer Drawing | |
| | | | | appd | M.Koga | Jan.15,'07 | | | | |
| sheet index | revision sheet | B | B | | | | | | | |
| | | 1 | 2 | | | | | Rev B | | |



| PT. NO. | PARTS NAME | MATERIAL | Q'TY | NOTE |
|---------|----------------|--|------|------------------------|
| 1 | HOUSING | GLASS FILLED THERMOPLASTIC RATED.(UL94V-0) | 1 | COLOR:BRACK |
| 2 | CONTACT | PHOSPHOR BRONZE | n | PLATING:TIN(LEAD FREE) |
| 3 | MOUNTING PLATE | BRASS | 2 | PLATING:TIN(LEAD FREE) |

RECOMMENDED PC BOARD LAYOUT
(COMPONENT SIDE)

n:NO. OF CONTACTS



NOTE
 1.This connector is symmetric for X,Y axis. As a result, It is possible to locate in emboss cavity even if rotated condition.
 2.Flatness for contact terminal and mounting plate must be within 0.1.
 3.This product meets European Union Directives and other country regulations as described in GS-22-008.

NUMBER OF CONTACTS : 18 TO 30 , ONLY EVEN POS.

| | | | | | | | | | |
|-------------|----------------|-----------------------|------------|---------------------------------------|------------|--|-----------|------------------------|--------------------------|
| mat'l. code | | surface ISO 1302 ✓ | | tolerance ISO 406 ISO 1101 | | projection | | product family 590F | |
| ltr | ecn no | dr | date | tolerances unless otherwise specified | | title FLOATING BOARD TO BOARD PLUG CONNECTOR (LEAD FREE) (CAT.No. BTFW__P-3SSTLF) | | | |
| A | J06-0146 | M.K | Apr.11,'06 | angles | linear | ± 0.3 | | scale | |
| B | J07-0021 | M.K | Jan.15,'07 | | | | | | |
| | | dr | K.Higuchi | | Jan.15,'07 | | dwg no | | sheet 2 of 2 |
| | | enr | M.Koga | | Jan.15,'07 | | JSA 96633 | | A4 |
| | | chr | K.Higuchi | | Jan.15,'07 | | type | | Product Customer Drawing |
| | | appd | M.Koga | | Jan.15,'07 | | | | |
| sheet index | revision sheet | B | B | | | | | Rev | B |
| | | 1 | 2 | | | | | | |



FCIconnect.com

Copyright FCI



Mouser Electronics

Authorized Distributor

Click to View Pricing, Inventory, Delivery & Lifecycle Information:

[FCI / Amphenol:](#)

[BTFW10P-3SSTE1LF](#) [BTFW12P-3SSTE1LF](#) [BTFW18P-3SSTE1LF](#) [BTFW20P-3SSTE1LF](#) [BTFW24P-3SSTE1LF](#)
[BTFW26P-3SSTE1LF](#) [BTFW22P-3SSTE1LF](#) [BTFW28P-3SSTE1LF](#) [BTFW16P-3SSTE1LF](#) [BTFW14P-3SSTE1LF](#)
[BTFW14P-3SSTE4LF](#) [BTFW20P-3SSTE4LF](#) [BTFW30P-3SSTE4LF](#) [BTFW18P-3SSTE4LF](#)