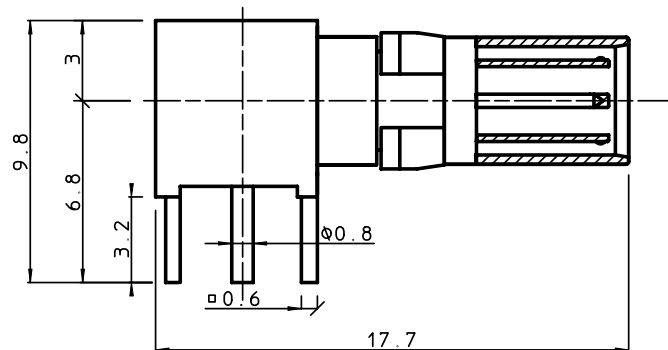


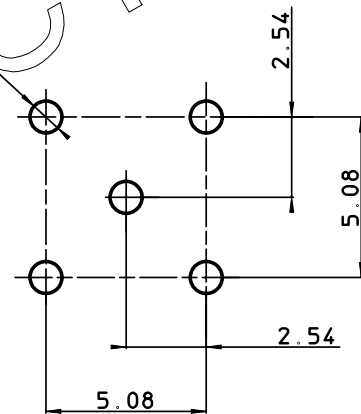
GEN. ST.	01	02	03	04	05	06	07	08	0D	50	60	70	80	90																	
INT. ST.	10	11	12	13	14	18	20	31	32	33	34	38	39	40	42	43	44	45	46	48	56	70	72	73	75	76	81	82	83	84	88

REV.	DATE	DESCRIPTION	BY	C'K'D'
A	2001-09-14	CONVERSION REVISION 03	KN	
B	2001-10-12	B10068	KN	
C	2006-07-04	106-0096	VIVEK	BKP

RMP I R01K00---LF
PIN CONTACT



P.C.B. LAY-OUT



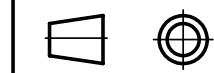
EUROPEAN PROJECTION

CATALOGUE NUMBER
RMP I R01K00---LF

PLATING CODE

- NOTE: 1. FOR MISSING INFO SEE DRAWING BS,C ,201624,029
2. THE PRODUCT (LF) MEETS EUROPEAN UNION DIRECTIVES AND OTHER COUNTRY REGULATIONS AS DESCRIBED IN GS-22-008.

1DEC ±0,2 2DEC ±0,1 ANGLES ±1°	APPR.	DATE	SIGN.	MALE/FEMALE COAX CONTACTS (STRAIGHT TERM.)
	DRAFT	1993-05-05	W.P.	CAT. No. RMP I R01K00---LF
	CHECKED			
WE RESERVE THE RIGHT TO CHANGE DIMENSIONS OR REQUIREMENTS WITHOUT PRIOR NOTICE.	PROD. MGR.			www.fciconnect.com
	PR. ENG. MGR.			
ALL DIMENSIONS IN MM	PR. MGT. MGR.			



REFERENCES

BS,C ,201624,006 C

THIS IS OUR EXCLUSIVE PROPERTY. IT IS NOT TO BE COPIED, REPRINTED OR DISCLOSED TO A THIRD PARTY, NOR USED FOR MANUFACTURING WITHOUT OUR WRITTEN CONSENT, AND HAS TO BE RETURNED TO US IN CASE OF NO USAGE
DIT IS ONZE EIGENDOM EN MAG NIET NAGEMAAKT, HERDRUKT, OVERGEMAAKT AAN DERDEN, NOCH VOOR FABRIKATIE GEBRUIKT WORDEN, ZONDER ONZE SCHRIFTELIJKE TOELATING. BIJ NIET GEBRUIK IS TERUGZENDING VERPLICHT.

Mouser Electronics

Authorized Distributor

Click to View Pricing, Inventory, Delivery & Lifecycle Information:

[FCI / Amphenol:](#)

[HM2G02P1LF](#) [HM2R85PA8100N9LF](#) [HM2S30PK5100GFLF](#) [RC12PIE70DRPLF](#) [HM2DK1247RCM1LF](#)
[HM2DK1256RCM1LF](#) [HM2DK1346RCM1LF](#) [HM2DK2578PCM1LF](#) [HM2Y197B1](#) [HM2Y236C3](#) [HM2Y280B4](#)
[HM2R82PA8108N9LF](#) [HM2Y196A29](#) [HM2Y278A1](#) [HM2Y278A2](#) [HM2Y302](#) [HM2Y350](#) [HM2Y350A10](#)
[RC12PIE75ERP](#) [RM12PIE57ERP](#) [HM2Y197A](#) [HM2Y197B2](#) [HM2E30PH5000](#) [HM2E32PH5000](#)
[HM2R02PA5108N9SET](#) [HM2S30PK5100GF](#) [HM2Y196A30](#) [HM2Y196A31](#) [HM2Y236C2](#) [HM2Y241A2](#) [HM2Y280](#)
[HM2Y290](#) [HM2Y197D](#) [HM2Y196A33](#) [HM2Y289-01](#) [HM2Y197E](#)