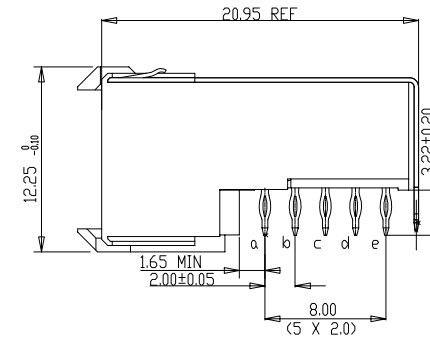


LAY-OUT
P.C.B.-HOLE



PERFORMANCE CHARACTERISTICS

CURRENT RATING 1.5A AT 20°C (FULLY LOADED)

1 A AT 70°C (FULLY LOADED)

RATED VOLTAGE : 500 V AC (CONT /CONT)

OPERATING TEMPERATURE : -55°C TO 125°C

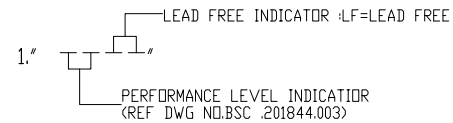
CONTACT RESISTANCE 20 mΩ MAX

INSERTION FORCE : 0.75N MAX/CONT

EXTRACTION FORCE : 0.15N MIN/CONT

INSULATION RESISTANCE : 10⁴ MΩ MIN

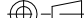


NOTES



2. THIS PRODUCT IS CSA APPROVED.
THIS PRODUCT IS UL RECOGNIZED.

3. FOR RECOMMENDED PTH DIMENSIONS REFER DRAWING :BS.A.201572.001

4. THIS PRODUCT (LF) MEETS EUROPEAN UNION DIRECTIVES AND OTHER COUNTRY REGULATIONS AS DESCRIBED IN GS-22-008

Material				Spec ref			
Mat code				✓	tolerance	projection	MM  
Heattreat					1DEC ± 0.2 1DEC 2DEC ± 0.1 2DEC ANGLES ± 1° HDKEEN		
Plating/Finish							
Dr	ALEX B	30-08-04		size A4		Scale 2.000	
Eng			Product family	MILLIPACS			
Chr			Model Name		ECN		
Appr			Model Revision		REL Level		
		title MPACS 5+2R RA RCP CONN TYPE C			drawing no BS,C ,201444,060		Rev. B
Pro/E file		catalog no		HM2R30PE5108----		CUSTOMER DRAWING	
						sheet 1 of 1	

Mouser Electronics

Authorized Distributor

Click to View Pricing, Inventory, Delivery & Lifecycle Information:

[FCI / Amphenol:](#)

[HM2R30PE5108N9LF](#)