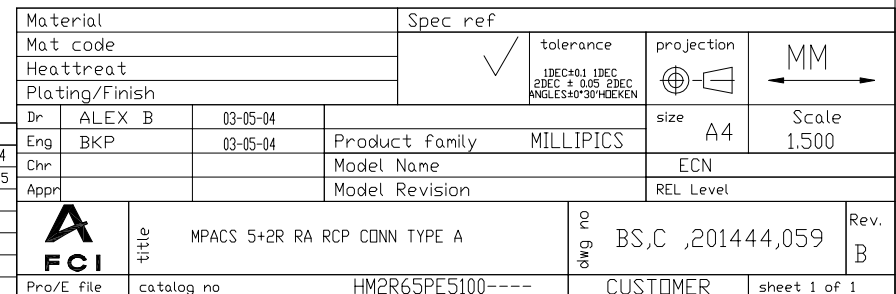
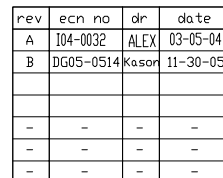
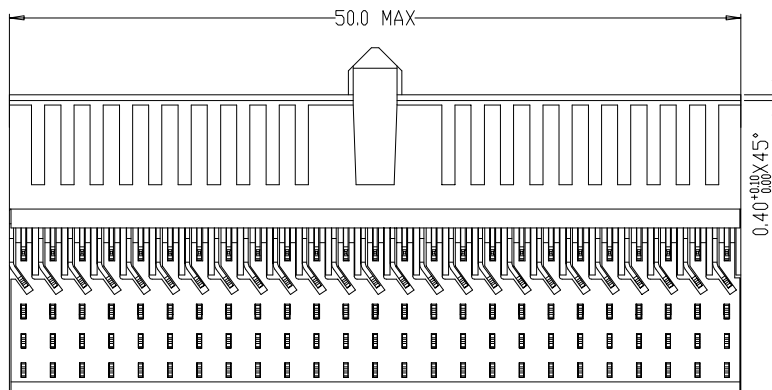




LAY-OUT
P.C.B.- HOLE



REV.	DATE	DESCRIPTION	BY	C'K'D'
B	06-05-04	104-0029	ALEX B	BKP
C	14-01-05	105-0006	ALEX B	BKP
D	01-06-05	105-0083	ALEX B	BKP

MILLIPACS : CONTACT PLATING CODE OVERVIEW

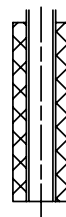
HM2---P------(L-)(LF)

FOR LEAD FREE PLATING
OPTIONAL (NOTE 1)
PLATING CODE (DIGIT 13 AND 14)

PLATING CODE	CONTACT AREA		
L9	1.25 μ Au min over 1.3 μ Ni min.	MALE CONN.: SHORT / WIRE WRAP CONT. FEMALE CONNECTOR	
E9	1.00 μ Au min over 1.3 μ Ni min.	MALE CONN.: SHORT / WIRE WRAP CONT. FEMALE CONNECTOR	PERFORMANCE LEVEL 1 (500 mating cycles)
N9	0.80 μ Au min over 1.3 μ Ni min.	MALE CONN.: SHORT / WIRE WRAP CONT. FEMALE CONNECTOR	PERFORMANCE LEVEL 2 (250 mating cycles)
Z1	0.40 μ Au min over 1.3 μ Ni min.	MALE CONN.: SHORT / WIRE WRAP CONT. FEMALE CONNECTOR	PERFORMANCE LEVEL 3 (50 mating cycles)
NN	0.15 μ Au Average over 1.02 μ NiP Average.	MALE CONN.: SHORT / WIRE WRAP CONT. FEMALE CONNECTOR	
NEN	0.38 μ Au Average over 1.02 μ NiP Average.	MALE CONN.: SHORT / WIRE WRAP CONT. FEMALE CONNECTOR	
GE	1.25 μ Au min over 1.3 μ Ni min.	MALE CONN.: REAR PLUG-UP CONTACTS	
GL	1.00 μ Au min over 1.3 μ Ni min.	MALE CONN.: REAR PLUG-UP CONTACTS	PERFORMANCE LEVEL 1 (500 mating cycles)
GF	0.80 μ Au min over 1.3 μ Ni min.	MALE CONN.: REAR PLUG-UP CONTACTS	PERFORMANCE LEVEL 2 (250 mating cycles)
GC	0.40 μ Au min over 1.3 μ Ni min.	MALE CONN.: REAR PLUG-UP CONTACTS	PERFORMANCE LEVEL 3 (50 mating cycles)
GN	0.15 μ Au Average over 1.02 μ NiP Average. (Both Front & Rear Sides)	MALE CONN.: REAR PLUG-UP CONTACTS	
GEN	0.38 μ Au Average over 1.02 μ NiP Average. (Both Front & Rear Sides)	MALE CONN.: REAR PLUG-UP CONTACTS	

NOTE :

- 1) IN CASE OF STR HDR CONNECTORS :
EXTENSIONS CAN BE ADDED TO THE PLATING CODE
IF LUBRICATED CONTACTS ARE REQUIRED
L : LUBRICATED
L1: LUBRICATED TO MEET TELCORDIA GR-1217 CORE REQUIREMENTS
- 2) PLATING AT EON AREA
LF : Sn MATT FINISH PLATING(0.05 μ Min)
ALL OTHER PART NOS : SnPb PLATING(0.05 μ Min)



REF NOTE 2 FOR
EON PLATING

1DEC ±0.2 1DEC 2DEC ±0.1 2DEC ANGLES ±1° HOEKEN	APPR.	DATE	SIGN.	MPACS CONTACT PLATING OVERVIEW	
WE RESERVE THE RIGHT TO CHANGE DIMENSIONS OR REQUIREMENTS WITHOUT PRIOR NOTICE.	DRAFT	210303	M.Fret	CAT. No. HM2---P----- (L-)	SCALE
	CHECKED				
	PROD. MGR.				
ALL DIMENSIONS IN MM	PR. ENG. MGR.			<div><div>A</div><div>FCI</div></div> <div>FCI MECHELEN N.V. A. SPINOYSTRAAT 8, 2800 MECHELEN</div>	
	PR. MGT. MGR.				
<div><div></div><div></div></div>	REFERENCES / REFERENTIES				
ALLE AFMETINGEN IN MM	PDM: Rev:D			STATUS: Released	CUSTOMER DRAWING: REVISION
				Printed: Jun 17 2008	

Mouser Electronics

Authorized Distributor

Click to View Pricing, Inventory, Delivery & Lifecycle Information:

[FCI / Amphenol:](#)

[HM2R65PE5100N9LF](#)