

1

2

3

4

A

B

C

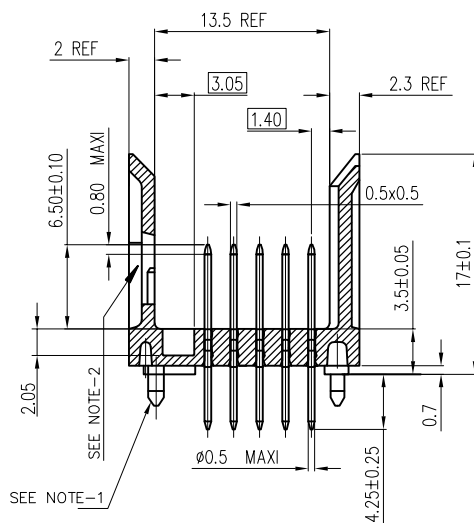
D

A

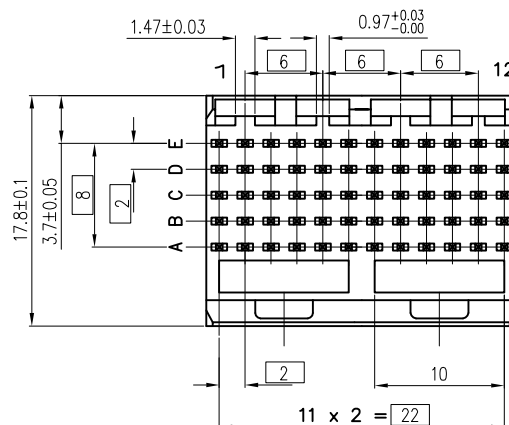
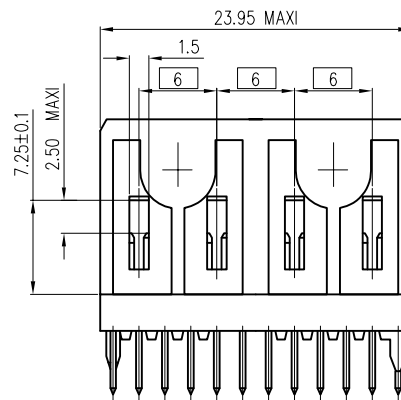
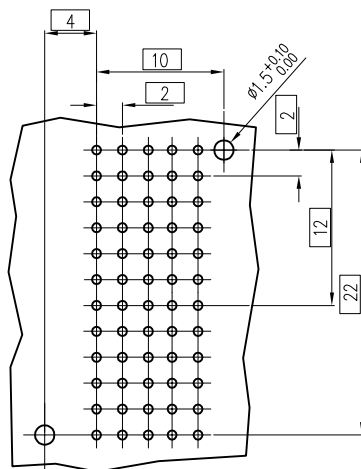
B

C

D



LAYOUT FOR P.C.B  
CONNECTOR SIDE VIEW



# GENERAL CHARACTERISTICS AND ROHS INFORMATIONS:

SEE PRODUCT SPECIFICATION GS-12-446

**NOTE-1:** 2 PEGS AT EACH END ONLY

**NOTE-2:** CAVITY FOR CODING KEY MOUNTING AND CABLE CONNECTOR LATCH.

**NOTE-3:** IF SUFFIX "P" IS ADDED IN P/N PACKAGING IS IN TRAYS  
BUT CONNECTOR MARKING IS WITHOUT "P"  
EXAMPLE: HM1W52DTR400H6P, MARKED HM1W52DTR400H6

**NOTE-4:** P.C.B HOLES DEFINITION - SEE GS-12-446

## SPECIFIC DATAS:

Visual inspection : 100%

- Marking failures
- Housing material failures
- Spoilt housing
- Stained housing
- Broken contacts ( twisted or loosen )

## TIN LEAD PART NUMBER

PART NUMBER HM1W52DTR400H6P

## LEAD FREE PART NUMBER

PART NUMBER HM1W52DTR400H6PLF

## 0.76 um Au & LEAD FREE PART NUMBER

△ PART NUMBER HM1W52DTR400HEPLF

## European Views

www.fciconnect.com			surface ISO 1302 ✓	tolerance std ISO 406 ISO 1101	projection mm
			TOLERANCES UNLESS OTHERWISE SPECIFIED		
Dr	MICHAEL SONG	2014/12/03	ANGULAR 0.XX ± 2	0.X	±0.1
Eng	MICHAEL SONG	2014/12/03		0.XX	±0.1
Chr	ZHEN LUO	2014/12/03		0.XXX	±0.1
Appr	COLLINS LU	2014/12/03	Product family		METRAL
			Spec ref		-
			size		A3
			Scale		2.5
			ECN		FLX-DG-19619
			title		METRAL STRAIGHT HEADER
			SP 400		
			catalog no		-
			C-8626-11115		
			CUSTOMER		sheet 1 of 1
			Rev.		E

1

2

3

4

# Mouser Electronics

Authorized Distributor

Click to View Pricing, Inventory, Delivery & Lifecycle Information:

[FCI / Amphenol:](#)

[HM1W52DTR400HEPLF](#)