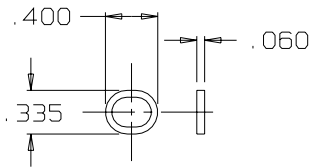
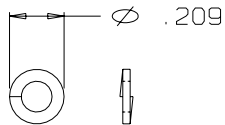


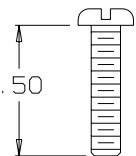
# B MS-105NSEU



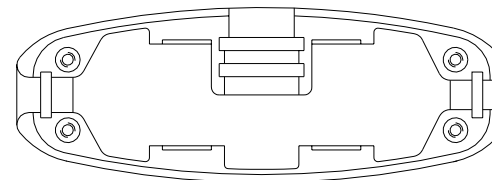
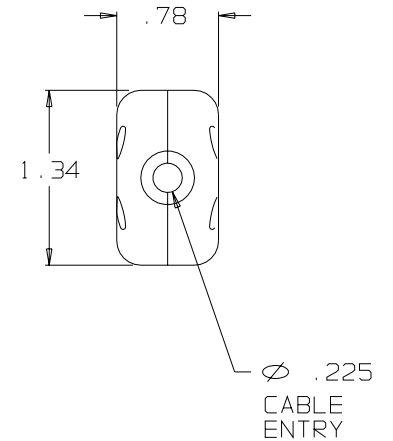
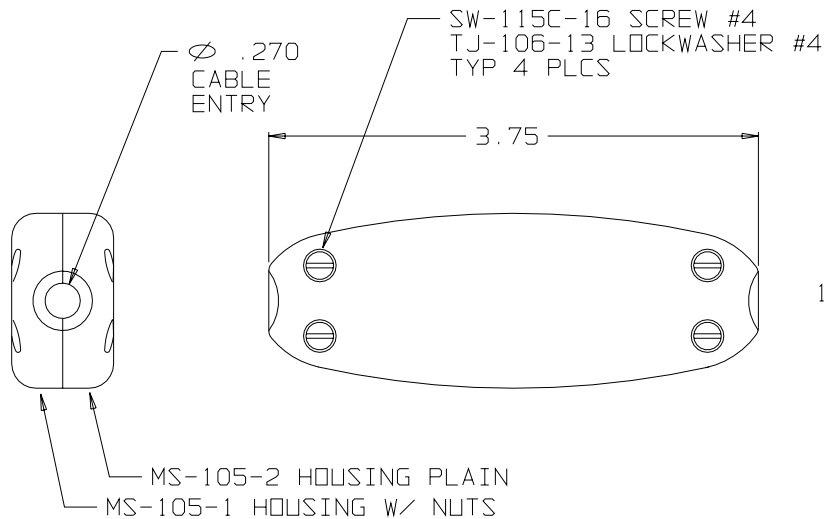
RING, STRAIN RELIEF  
TJ-106-10AEU  
(2 REQ'D)



LOCKWASHER #4  
TJ-106-13  
(6 REQ'D)  
SCALE 2:1



SCREW #4  
SW-115C-16  
(4 REQ'D)  
SCALE 2:1



MS-105NSEU WITH  
MS-105-2 REMOVED

THIS DOCUMENT CONTAINS PROPRIETARY INFORMATION OF NEXUS, INCORPORATED AND SUCH INFORMATION MAY NOT BE DISCLOSED TO OTHERS FOR ANY PURPOSE OR USED FOR ANY PURPOSE WITHOUT THE WRITTEN CONSENT OF NEXUS.

DWN. BY EWT	DATE 6/3/08	MATERIAL SEE FIELD OF DRAWING	
CHECKED BY	DATE	FINISH	
APPR. BY	DATE	WEIGHT —	SCALE 1:1
UNLESS OTHERWISE SPECIFIED DIMENSIONS ARE IN INCHES TOLERANCES ON .XX .XXX ANGLES — ±.003 ±.5°		TITLE MICROPHONE SWITCH NO SWITCH (ROHS)	
		DO NOT SCALE DWG.	SHEET 1 OF 1
SIZE B		NEXUS STAMFORD, CONN DWG. NO. MS-105NSEU	

LET.	REVISION	CN #	DATE	CHK.
------	----------	------	------	------

# Mouser Electronics

Authorized Distributor

Click to View Pricing, Inventory, Delivery & Lifecycle Information:

[Amphenol:](#)

[MS-105NSEU](#)