

NOTES:
1. MATERIALS AND FINISHES:
BODY - STAINLESS STEEL, PASSIVATED
CONTACT - BRASS, GOLD PLATING
INSULATOR - PTFE

2. ELECTRICAL:
A. IMPEDANCE: 50 OHM
B. FREQUENCY RANGE: DC - 18 GHz
C. VSWR(RETURN LOSS): 1.2 (20dB) @ 18 GHz MAX

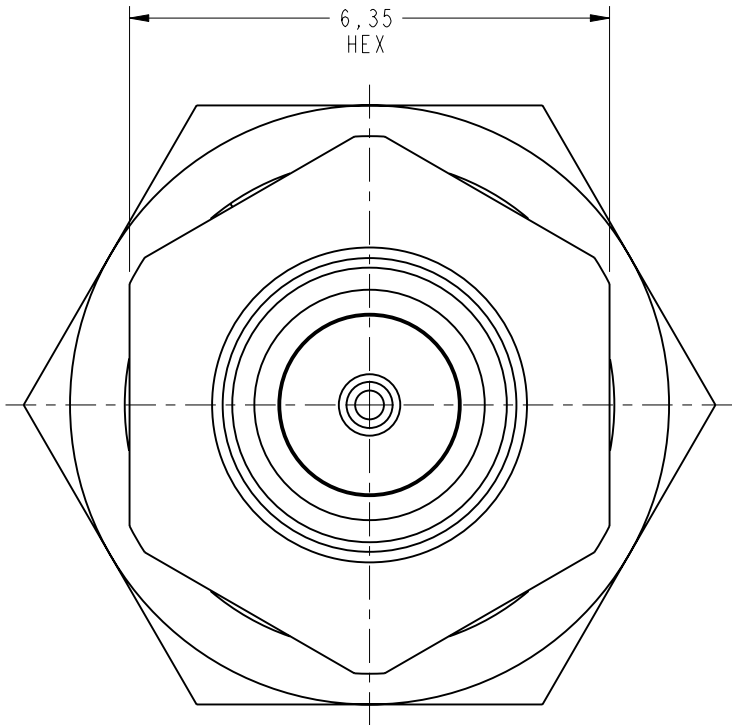
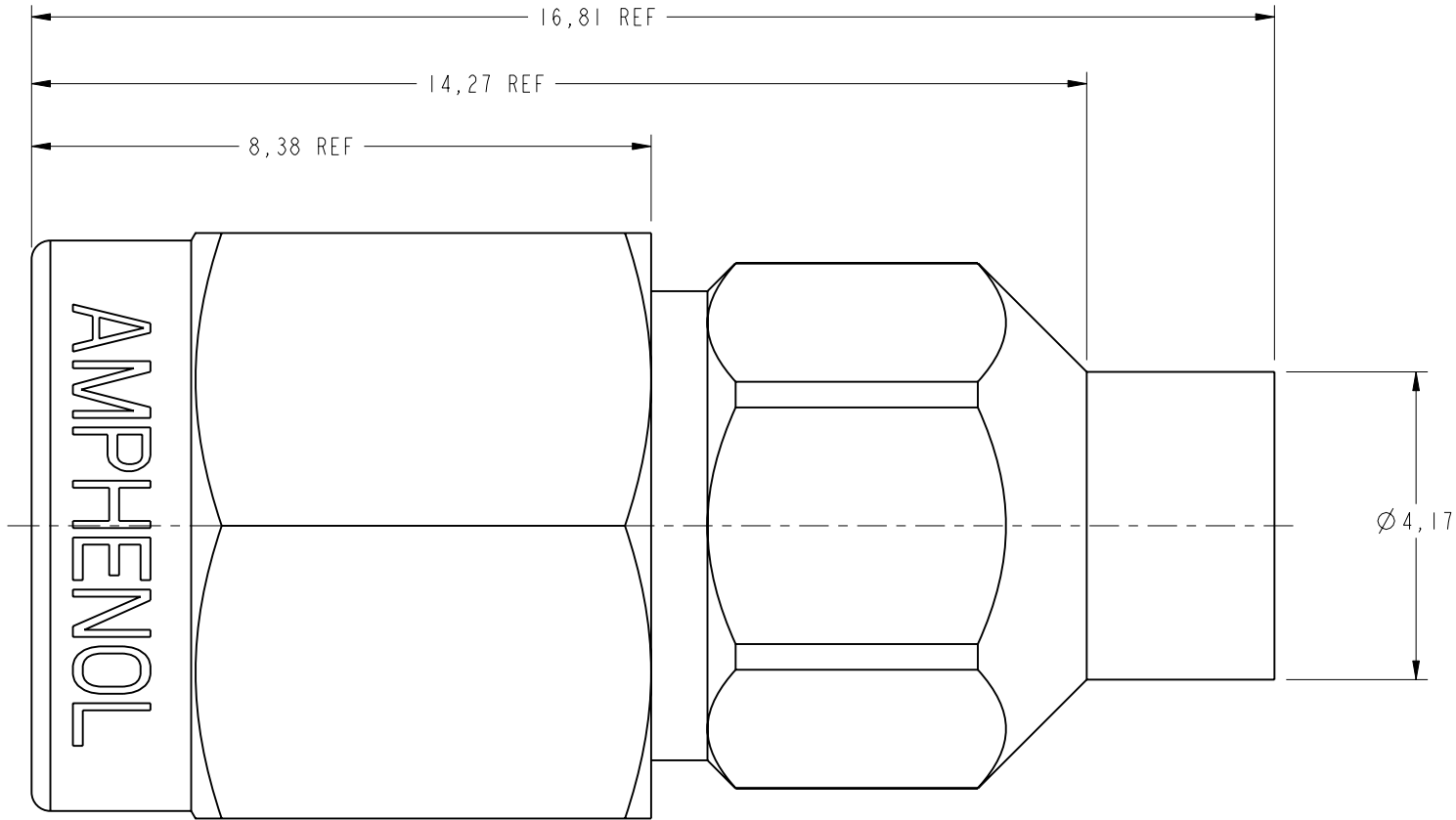
3. MECHANICAL:
A. DURABILITY:
SMA SIDE:500 CYCLES MIN.
SMP SIDE:500 CYCLES MIN.
B. TEMPERATURE RANGE: -65° C TO 165° C

4. PACKAGING:
A. QUANTITY: SINGLE PACK.

THIRD ANGLE PROJ.

REVISIONS				
REV	DESCRIPTION	DATE	ECO	APPR
A	RELEASE TO MFG.	06-Nov-15	50844	MD

SCALE 5.000



CUSTOMER OUTLINE DRAWING
ALL OTHER SHEETS ARE FOR INTERNAL USE ONLY

<div>UNLESS OTHERWISE SPECIFIED, DIMENSIONS ARE IN METRIC AND TOLERANCES ARE: <0.5mm 0.5 - 6mm 6 - 30mm 30 - 120mm ANGLES ± 0.05mm ±0.1mm ±0.2mm ± 0.3mm ±1°</div> <div>NOTICE - These drawings, specifications, or other data (1) are, and remain the property of Amphenol corp. (2) must be returned upon request; and (3) are confidential and not to be disclosed to any person other than those to whom they are given by Amphenol Corp. the furnishing of these drawings, specifications, or other data by Amphenol Corp., or to any other person to anyone for any purpose is not to be regarded by implication or otherwise in any manner licensing, granting rights to permitting such holder or any other person to manufacture, use or sell any product, process or design, patented or otherwise, that may in any way be related to or disclosed by said drawings, specifications, or other data.</div>	MATERIAL SEE NOTES	DRAWN M.DONG	DATE 27-Oct-15	TITLE SMA (M) PLUG TO SMP (M) JACK ADAPTER LIMITED DETENT	Amphenol RF www.amphenolrf.com	
		ENGINEER H.HE	DATE 06-Nov-15			
		REFERENCE EAR# 6558 AND 615X-1865-100 AD-SMAPSMPJ-1	DATE 17-Nov-15		DRAWING NO.SMAM-SMPM-S/PT50G-50	
		CONFIGURATION LEVEL: In Work	CAD FILE	SCALE: 10.0:1.0	SHEET 2 OF 2	ITEM NO.11M-37M-PA-5-F
		FINISH		DWG SIZE B	REV A	PART NO.AD-SMAPSMPJ-1

Mouser Electronics

Authorized Distributor

Click to View Pricing, Inventory, Delivery & Lifecycle Information:

[Amphenol:](#)

[AD-SMAPSMPJ-1](#)