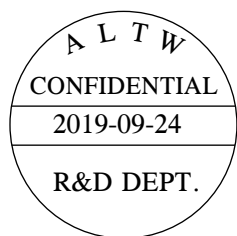
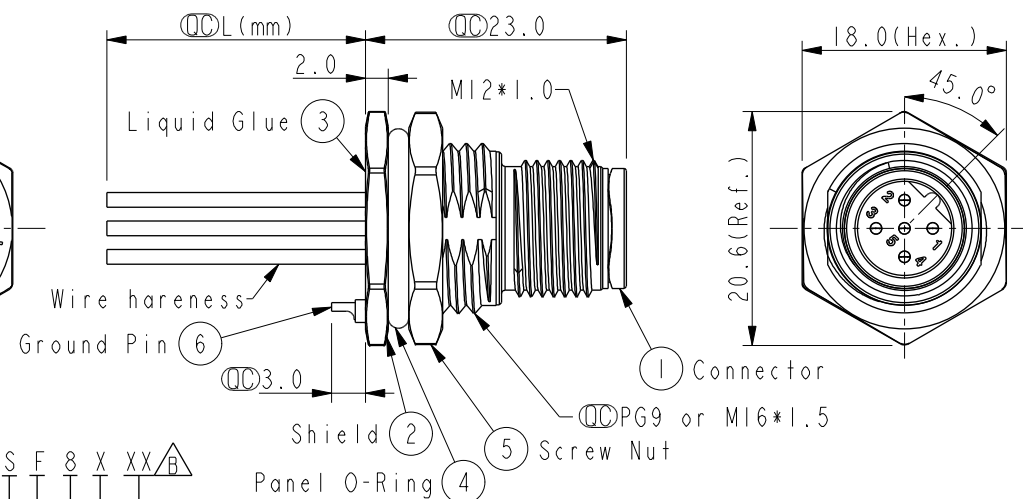
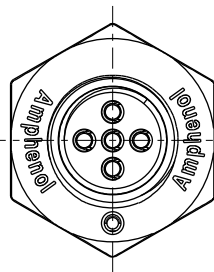
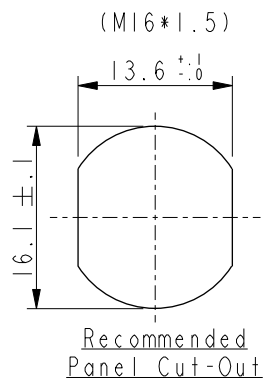
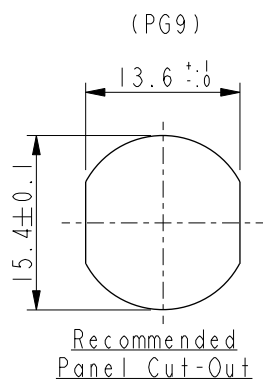


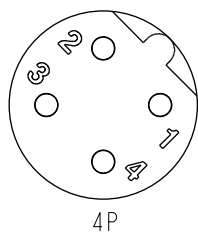
REV.	ECN NO.	DATE	SIGN	DESCRIPTION
A		2019/03/08	Allen Pan	
B	CI9I682	2019/09/24	Vicky	Update Wire Tolerance



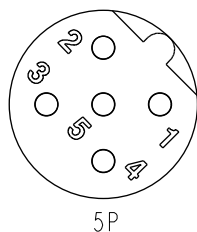
5	--	5	Gray	灰
4	Black	4	Black	黑
3	Blue	3	Blue	藍
2	White	2	White	白
1	Brown	1	Brown	棕

Pin # Wire Pin # Wire

Pin Out



4P



5P

M SBS - XX P M M C - S F 8 X XX B

SBS: B-Code
Shielded
04: 4Pin
05: 5Pin
P: Panel (板端)
M: Male Connector (公座)
M: Male Pin (公Pin)
C: Crimp Type (打端式)
S: Screw (螺紋式)

15: 150mm
20: 200mm
95: 950mm
Cable Pitch Unit: 50mm

A0: 1000mm
A5: 1500mm
Cable Pitch Unit: 100mm
Wire Length (L): 150~1500mm

B: PG9
C: M16*1.5

8: IP68 (防水等級68)

F: Front Fasten
(前鎖式/Enclosure
Rear Mount)

Note:

- * Important Dimension.
- * Waterproof Rate: IP68.
- * Housing: Nylon+GF, Black.
- * Male Pin: Copper Alloy, Gold Plated.
- * Shield: Zinc Alloy, Nickel Plated.
- * Screw Nut: Zinc Alloy, Nickel Plated.
- * Panel O-Ring: Viton, Black.
- * Wire harness: UL1061
- * Rated Voltage: 60V dc. or ac.
- * Rated Current: 4A
- * Operating Temperature: -25~85°C
- * For Panel Thickness Max 4.5mm.
- * Recommended Nut Torque: 4-6 Kgf.cm.
- * Wire harness Tolerance: 150~300 ±15mm
301~1000 ±20mm
Over 1000 +50/-0mm

5P	UL1061	22	MSBS-05PMMC-SF8CXX
4P			MSBS-05PMMC-SF8BXX
			MSBS-04PMMC-SF8CXX
			MSBS-04PMMC-SF8BXX
Contacts	Wire harness	AWG	Item No.

Pin Assignments Front View

UNIT: mm		TITLE	M12 B-Code Male Conn. Panel Front With Wire harness Shielded		
TOLERANCE		SCALE	3:2	SIZE	A4
.X ±0.25		REV.	B	WC-REV.	A.1
.XX ±0.1		SHEET 1 OF 1			QC: Inspection item
.XXX ±0.05					
ANGLES ±1°					

Amphenol LTW
安費諾亮泰企業股份有限公司

ITEM NO	DRAWN BY	DATE
DWG NO	Vicky	2019-09-24
CUSTOMER	CHECKED BY	DATE
ALTW	Rita	2019-09-24
	APPROVED BY	DATE
	Max	2019-09-24

Mouser Electronics

Authorized Distributor

Click to View Pricing, Inventory, Delivery & Lifecycle Information:

[Amphenol:](#)

[MSBS-05PMMC-SF8B30](#) [MSBS-05PMMC-SF8C15](#) [MSBS-05PMMC-SF8C30](#) [MSBS-04PMMC-SF8B15](#) [MSBS-04PMMC-SF8B30](#) [MSBS-04PMMC-SF8C15](#) [MSBS-04PMMC-SF8C30](#) [MSBS-05PMMC-SF8B15](#)