

REV	ECN	APPD
—	4785	

L=PITCH X POSITIONS

# NOTES:

1 PARTS GREATER THAN 3 POSITIONS ASSEMBLED WITH APPROPRIATE COMBINATIONS OF 2 AND 3 POSITION MODULES. (3 POSITION MODULE SHOWN)

2 9.52MM PITCH DIMENSIONS INDICATED IN PARENTHESES.



## RATINGS

CURRENT — 30A  
VOLTAGE — 300V(600V)  
U.L. FILE NO.



## RATINGS

CURRENT — 32A  
VOLTAGE — 450V(600V)  
CSA FILE NO.

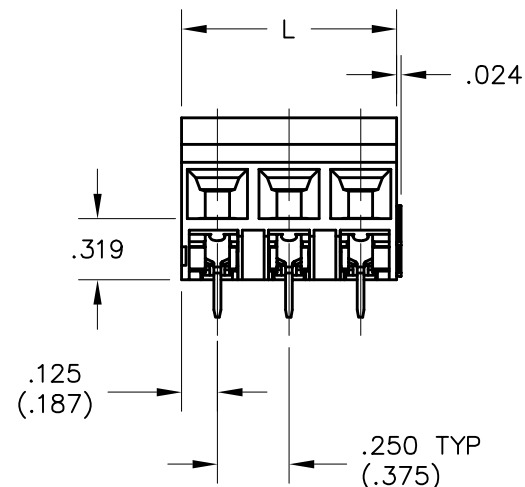
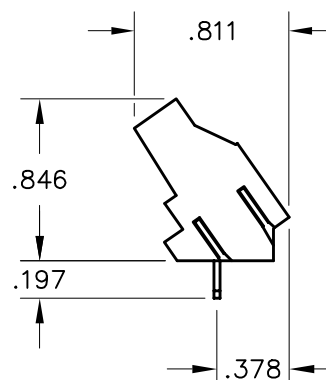
DIN VDE 0627:1986  
DIN VDE 0110-1:1989  
EN 60947-1:1991  
EN 60947-7-1:1992

CURRENT — 32A  
VOLTAGE — 450V(750V)  
TUV FILE NO.

ESPMXXX30

1 NUMBER OF POSITIONS

2 PITCH:  
1=.250[6.35MM]  
2=.375[9.52MM]



## INSTALLATION RECOMMENDATIONS

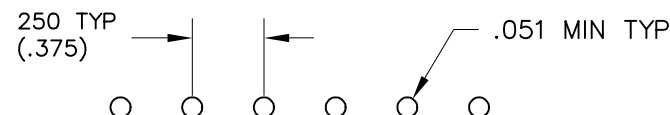
WIRE RANGE: 10-24 AWG  
WIRE STRIP LENGTH: .280-.310  
TIGHTENING TORQUE: 7.1 LB-IN.

## MATERIALS

HOUSING: POLYAMIDE 6,6, COLOR: BLACK  
CONTACT: COPPER ALLOY, TIN PLATED  
SCREW / CAGE CLAMP: COPPER ALLOY, NICKEL PLATED

OPERATING TEMPERATURE RANGE: -40°C TO 110°C

RECOMMENDED PCB THICKNESS: .157" MAX



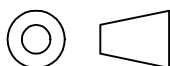
## DIMENSIONS

ANSI Y14.5M  
UNITS: INCHES  
ACAD FILE

## TOLERANCES

.XX ±.01  
.XXX ±.005  
ANGLES ±2°

## PROJECTION



## SPECIFICATION DRAWING

ENGR  
B. JAWORSKI 11/1/01

CHKD

APPD



## TITLE

ESPM TERMINAL BLOCK  
ANGLED POWER BLOCK  
.250/.375 PITCH

ORIGINAL  
STAMPED  
IN RED

THIS DOCUMENT CONTAINS  
PROPRIETARY INFORMATION WHICH  
IS THE CONFIDENTIAL PROPERTY  
OF PCD, INC. PEABODY, MA, USA

SIZE DWG NO.

A

ESPM02130

REV

—

CODE: 58982

SCALE: NONE

SHEET 1 OF 1

# Mouser Electronics

Authorized Distributor

Click to View Pricing, Inventory, Delivery & Lifecycle Information:

[Amphenol:](#)

[ESPM02230](#) [ESPM03230](#)