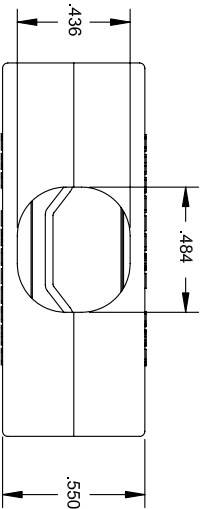
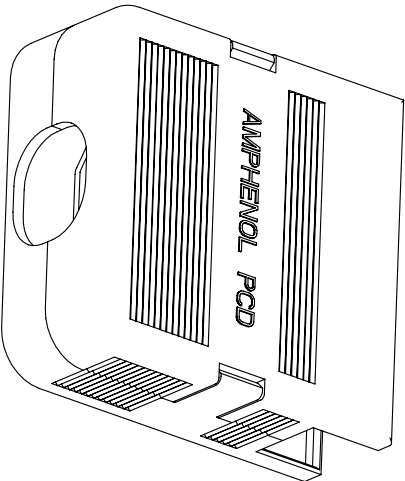
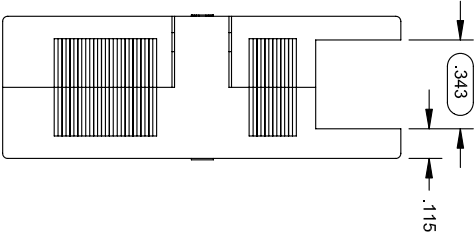
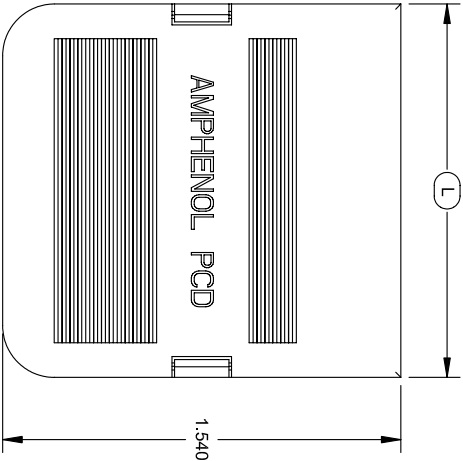
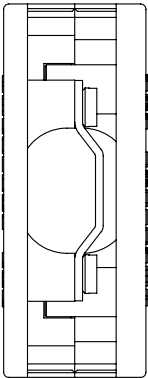



REV	ECN	APPD
1		



NOTES:  
MATERIALS: HOUSING: PA UL 94 V-0 CLAMP.  
100% TIN-PLATED STEEL (1020 SERIES)  
SCREW: PHOS BRONZE, NICKEL PLATED.

P/N.	POS	DIM L (±0.004/IN)
ELXS041X0	4	0.616
ELXS051X0	5	0.754
ELXS061X0	6	0.892
ELXS071X0	7	1.030
ELXS081X0	8	1.168
ELXS091X0	9	1.306
ELXS101X0	10	1.444
ELXS11X0	11	1.582
ELXS121X0	12	1.720
ELXS131X0	13	1.858
ELXS141X0	14	1.996
ELXS151X0	15	2.134
ELXS161X0	16	2.272
ELXS171X0	17	2.410
X	COLOR	ELXS181X0 18 2.548
0	BLACK	ELXS191X0 19 2.686
G	GREEN	ELXS201X0 20 2.824

DIMENSIONS		TOLERANCES		PROJECTION		TITLE  ASSEMBLY CONNECTOR COVER .138CL WIRE PROTECTION/STRAIN RELIEF			
ANSI Y14.5M UNITS: INCHES P/WE FILE		.XX ±0.01 XXX ±0.005 ANGLES ±0.5°							
ORIGINAL NOT FOR CUSTOMER DISTRIBUTION		THIS DOCUMENT CONTAINS PROPRIETARY INFORMATION WHICH IS THE CONFIDENTIAL PROPERTY OF AMPHENOL PCD INC., BEVERLY, MA				Amphenol Pcd  ENGR Ricky Zhang Mar-02-10			
CHKD		SIZE		DWG NO.		REV			
APPD		B		ELXS04100_C		1			
CODE: 58982		SCALE: 2:1		SHEET 1		OF 1			

# Mouser Electronics

Authorized Distributor

Click to View Pricing, Inventory, Delivery & Lifecycle Information:

[Amphenol:](#)

[ELXS041G0](#)