

# ELVF SERIES PART NUMBERING SCHEME

REV	ECN	APP'D
-	4498	IQ 7/31/01
A	4974	IQ 9/10/02
B	5742	PN 12/28/05

ELVF 4 0

NUMBER OF POSITIONS  
2 - 20

E = EARS

COLOR AND PLATING

0 = BLACK, TIN (STANDARD)  
G = GREEN, TIN  
1 = BLACK, SELECTIVE GOLD  
2 = GREEN, SEL. GOLD



RATINGS

CURRENT - 12A  
VOLTAGE - 300V  
U.L. FILE NO. E83421



RATINGS

CURRENT - 12 A  
VOLTAGE - 300 V  
CSA FILE NO. PENDING

DIN VDE 0627:1986  
DIN VDE 0110-1:1989  
EN 60947-1:1991  
EN 60947-7-1:1992

CURRENT - 12 A  
VOLTAGE - 300 V  
TUV FILE NO. PENDING

## INSTALLATION RECOMMENDATIONS:

WIRE RANGE: AWG #16-28, STRANDED OR SOLID  
WIRE STRIP LENGTH: .375" (9,52mm)  
TIGHTENING TORQUE: 2.2 LB-IN (,25 N-M)

## CONSULT PCD FOR PART NO. AND AVAILABILITY OF FOLLOWING OPTIONS:

- \* CUSTOM COLORS
- \* CUSTOM MARKING
- \* CUSTOM KEYING
- \* SELECTIVE CONTACT LOADING
- \* EARS

## MATERIALS:

HOUSING: PA 66-6, UL 94 V-0  
CONTACT: COPPER ALLOY, TIN  
OR GOLD FINISH  
SCREW: COPPER ALLOY, NICKEL FINISH  
WIRE CLAMP: COPPER ALLOY, NICKEL FINISH

MAX OPERATING TEMP: 105°C

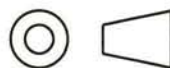
## DIMENSIONS

ANSI Y14.5M  
UNITS: INCHES  
Pro/E FILE

## TOLERANCES

.XX ±0.15  
.XXX ±0.006  
ANGLES ±2.0°

## PROJECTION



Amphenol Pcd

ENGR

C. LASHUA 7/5/01

CHKD

A. PATRIE 12/19/01

APPD

I. QUINN 7/23/01

## TITLE

ELVF SERIES  
FRONT/FRONT CAGE CLAMP  
TERMINAL BLOCK: .150 CL

ORIGINAL  
STAMPED  
IN RED

THIS DOCUMENT CONTAINS  
PROPRIETARY INFORMATION WHICH  
IS THE CONFIDENTIAL PROPERTY  
OF AMPHENOL PCD, INC.  
PEABODY, MA, USA

SIZE

A

DWG NO.

ELVF02400

REV

B

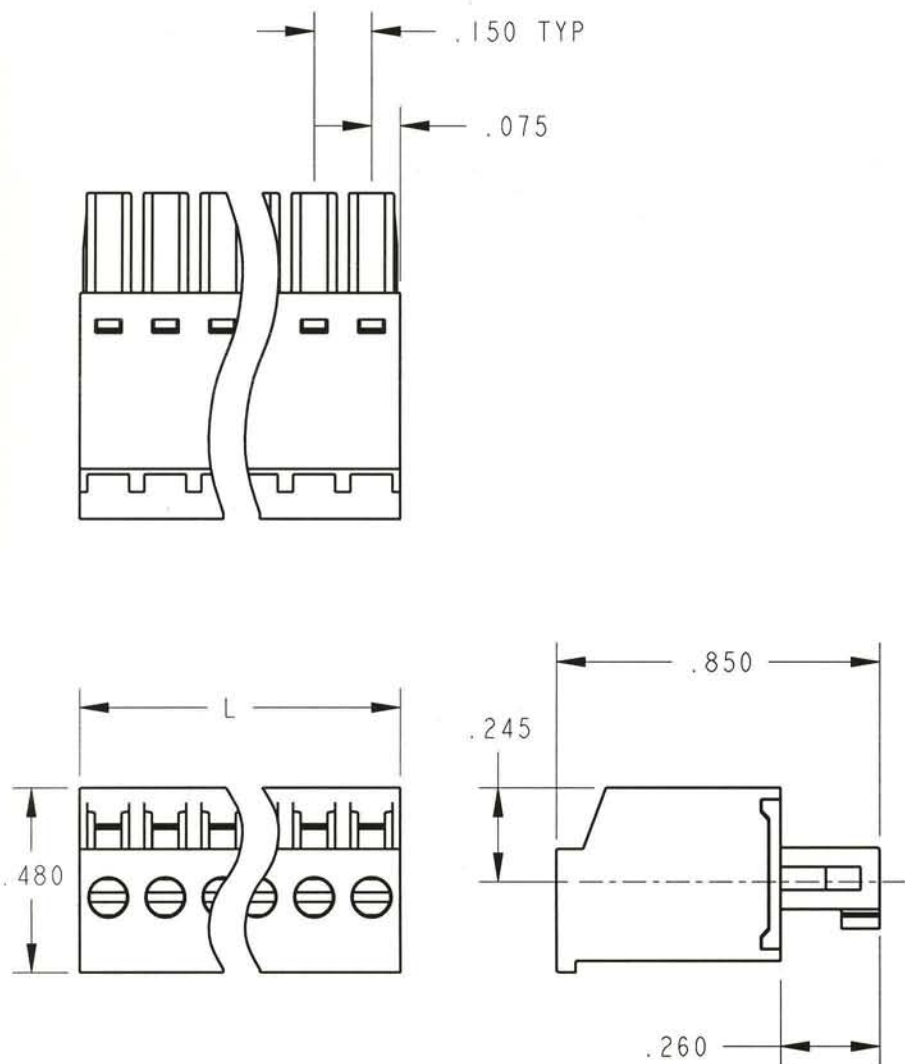
CODE: 58982

SCALE: NONE

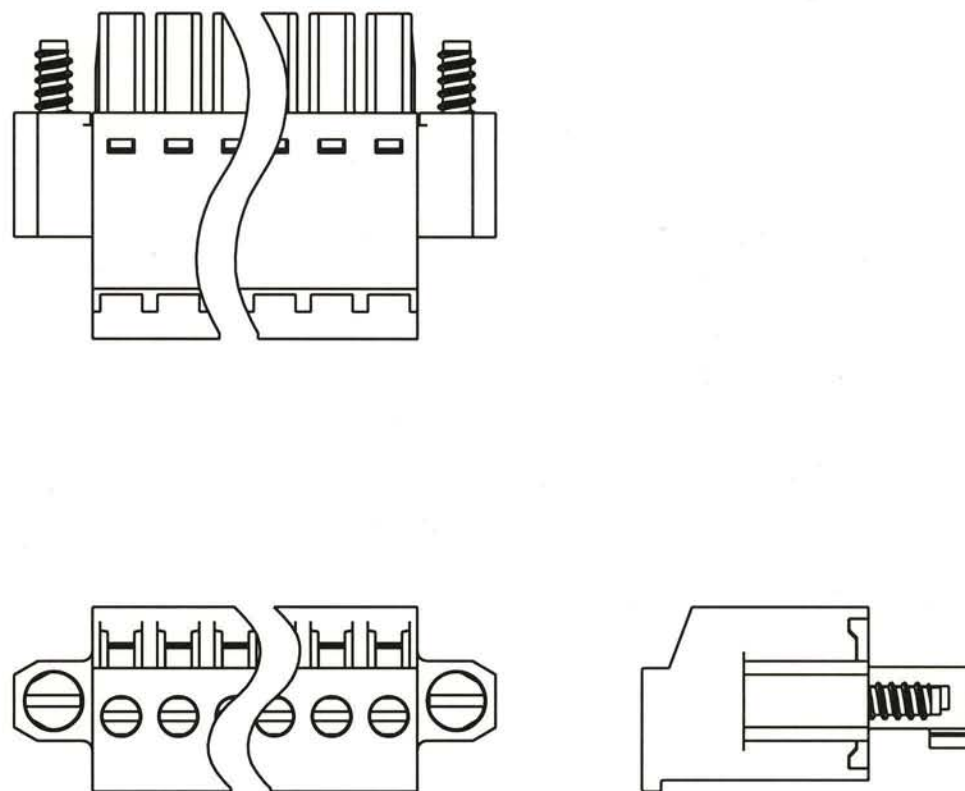
SHEET 1 OF 2

L=NUM OF POS X CL SPACING

ELVF WITHOUT EARS



ELVF WITH EARS



SIZE  
**A**

DWG NO.

ELVF02400

REV  
**B**

CODE: 58982

SCALE: NONE

SHEET 2 OF 2

# Mouser Electronics

Authorized Distributor

Click to View Pricing, Inventory, Delivery & Lifecycle Information:

[Amphenol:](#)

[ELVF164G0E](#)