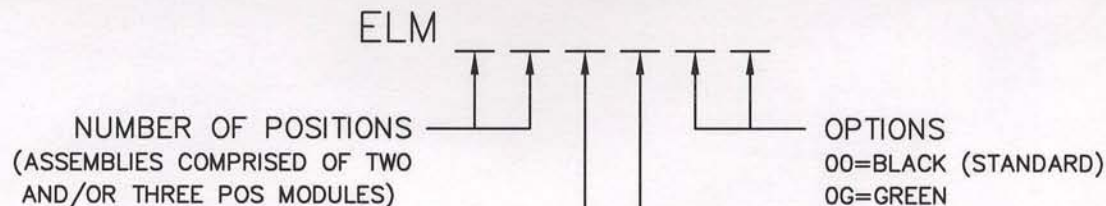


# ELM SERIES PART NUMBERING SCHEME

REV	ECN	APPD
A	3891	JEC 12/22/99
B	5742	DN 12/28/05



CONSULT PCD FOR PART NO. AND  
AVAILABILITY OF FOLLOWING OPTIONS:

- CUSTOM COLORS
- CUSTOM MARKING
- LOCK-DOWN EARS



## RATINGS

CURRENT - 10A  
VOLTAGE - 300V, 600V\*  
U.L. FILE NO. E83421



## RATINGS

CURRENT - 10A  
VOLTAGE - 300V, 600V\*  
CSA FILE NO. LR69703

DIN VDE 0627:1986  
DIN VDE 0110-1:1989  
EN 60947-1:1991  
EN 60947-7-1:1992

CURRENT - N/A  
VOLTAGE - N/A  
TUV FILE NO. N/A

\* PENDING  
CL SPACING CODE:  
3, 4, 5, 6

INSTALLATION  
RECOMMENDATIONS:  
WIRE RANGE: AWG #12-28  
WIRE STRIP LENGTH: .250"  
TIGHTENING TORQUE: 7 LB-IN.

MATERIALS:  
HOUSING: PBT, UL 94 V-0  
CONTACT: BRASS, TIN FINISH  
SCREW: COPPER ALLOY, NICKEL FINISH  
WIRE CLAMP: COPPER ALLOY, NICKEL FINISH

MAX OPERATING TEMPERATURE:  
105°C

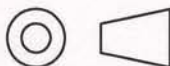
## DIMENSIONS

ANSI Y14.5M  
UNITS: INCHES  
ACAD FILE

## TOLERANCES

.XX ±.01  
.XXX ±.005  
ANGLES ±2°

## PROJECTION



## Amphenol Pcd

SPECIFICATION DRAWING

ENGR  
J. WILKINSON 12/22/99

CHKD  
A. PATRIE 12/8/98  
APPD  
J. CAHALY 12-11-98

## TITLE

ELM SERIES  
TERMINAL BLOCK  
BOARD MOUNT

ORIGINAL  
STAMPED  
IN RED

THIS DOCUMENT CONTAINS  
PROPRIETARY INFORMATION WHICH  
IS THE CONFIDENTIAL PROPERTY  
OF AMPHENOL PCD INC. PEABODY, MA

SIZE  
A

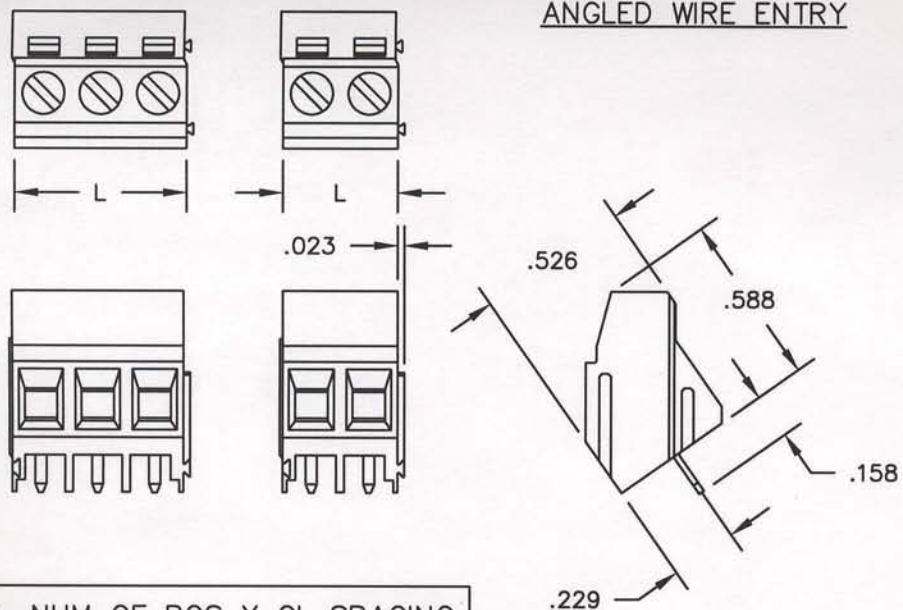
DWG NO.

ELM021100

REV  
B

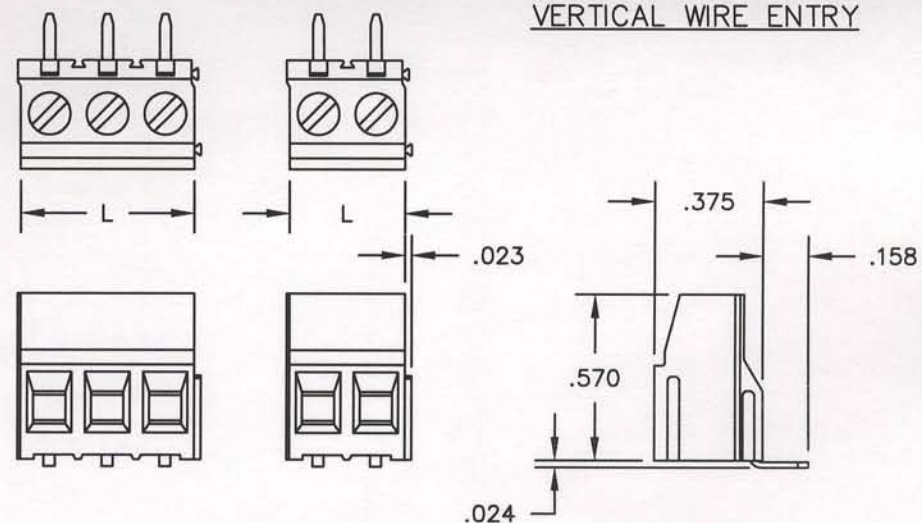
CODE: 58982 SCALE: NONE SHEET 1 OF 3

### ANGLED WIRE ENTRY



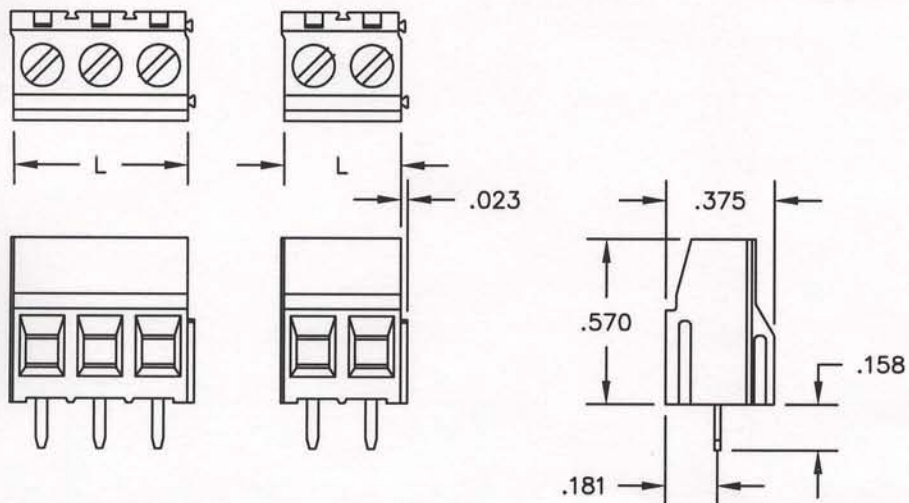
$L = \text{NUM OF POS} \times \text{CL SPACING}$

### VERTICAL WIRE ENTRY



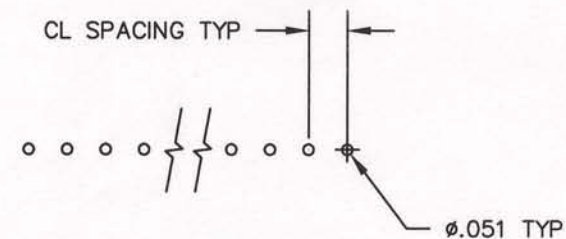
$L = \text{NUM OF POS} \times \text{CL SPACING}$

### HORIZONTAL WIRE ENTRY



$L = \text{NUM OF POS} \times \text{CL SPACING}$

### PRINTED CIRCUIT BOARD CONFIGURATION



RECOMMENDED PCB THICKNESS:  $.062 \pm .008$

SIZE

A

DWG NO.

ELM021100

REV

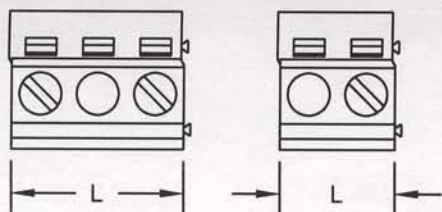
B

CODE: 58982

SCALE: NONE

SHEET 2 OF 3

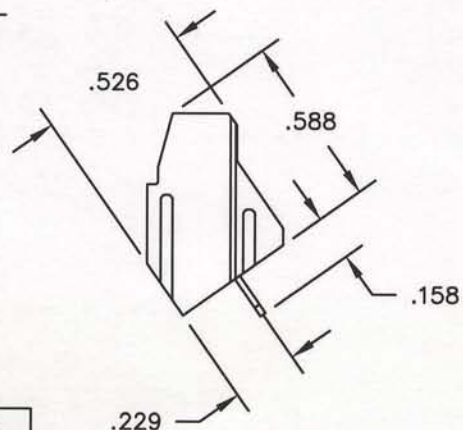
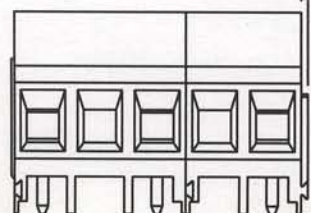




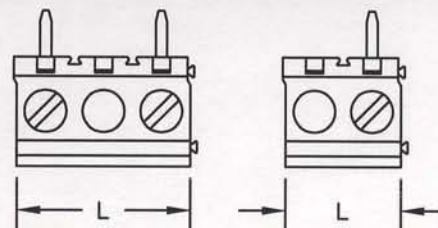
### ANGLED WIRE ENTRY

.400" / 10MM CL

.023



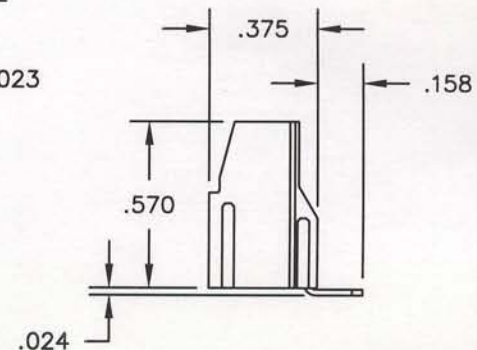
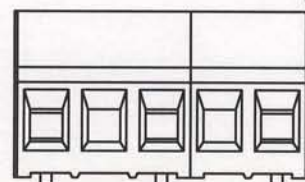
$L = \text{NUM OF POS} \times \text{CL} - \text{CL}/2$



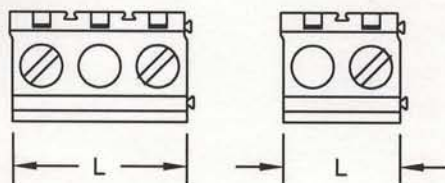
### VERTICAL WIRE ENTRY

.400" / 10MM CL

.023



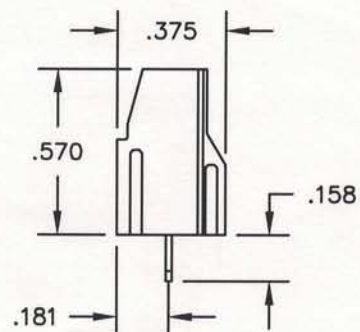
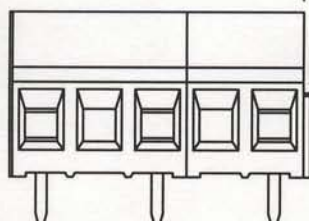
$L = \text{NUM OF POS} \times \text{CL} - \text{CL}/2$



### HORIZONTAL WIRE ENTRY

.400" / 10MM CL

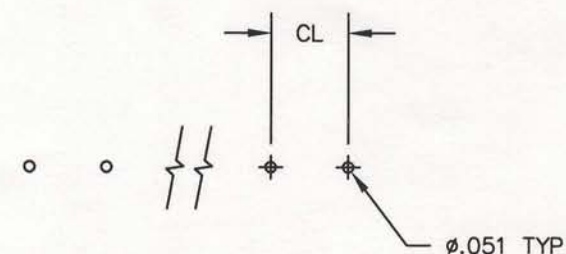
.023



$L = \text{NUM OF POS} \times \text{CL} - \text{CL}/2$

### PRINTED CIRCUIT BOARD CONFIGURATION

.400" / 10MM CL



RECOMMENDED PCB THICKNESS: .062±.008

SIZE

A

DWG NO.

ELM021100

REV

B

CODE: 58982

SCALE: NONE

SHEET 3 OF 3

# Mouser Electronics

Authorized Distributor

Click to View Pricing, Inventory, Delivery & Lifecycle Information:

[Amphenol:](#)

[ELM021100](#) [ELM051200](#) [ELM029100](#) [ELM021200](#)