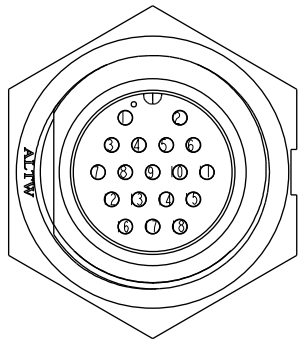
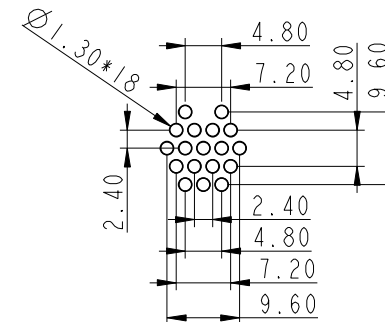
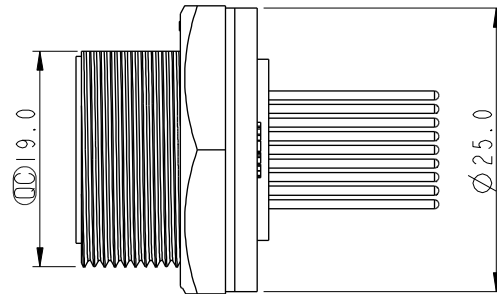


| REV. | ECN NO. | DATE | SIGN | DESCRIPTION |
|------|------------|------------|------|-------------|
| B | LEN1630256 | 2016/03/01 | Ruru | Change Logo |
| C | C190310 | 2019/03/08 | Ruru | Modify Note |
| | | | | |

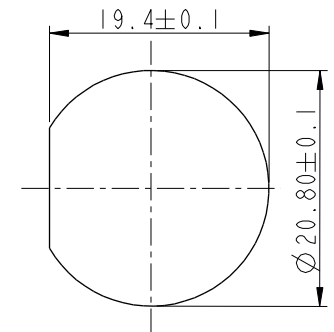


Pin Assignments

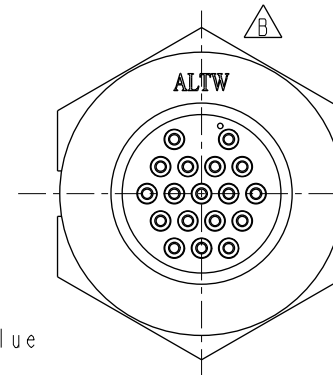
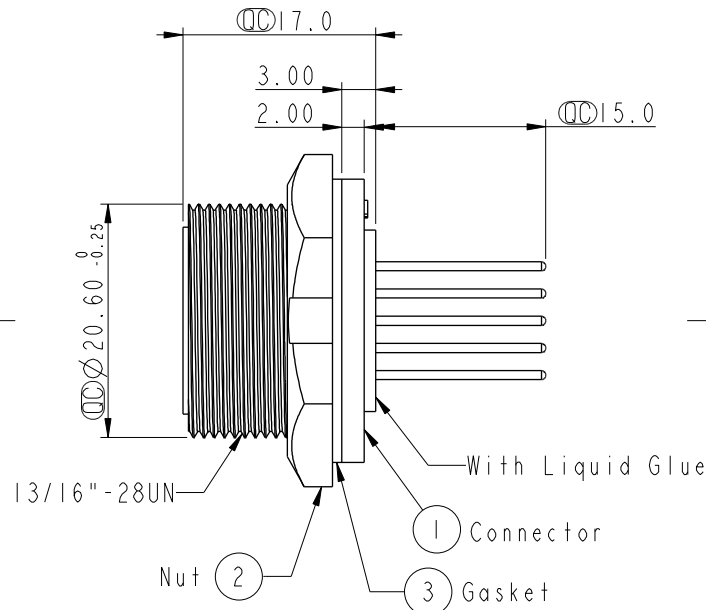
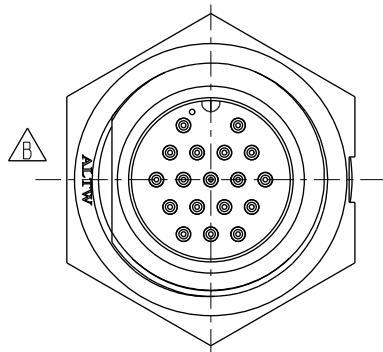
Front View 前視圖



18 Pin Male Connector Male Pin PCB Layout

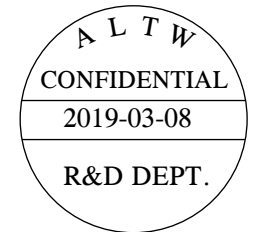


Recommended Panel Cut-Out



Note: $\triangle C$

- *  Important Dimension.
- * Waterproof Rate: IP67, Unmated
- * Housing: Thermoplastic, Black
- * Pin: Copper Alloy, Gold Plated
- * Nut: Thermoplastic, Black
- * Gasket: Rubber, Black
- * Use with waterproof cap or dust cap
For Panel Thickness Max: 2.0mm
- * Use without waterproof cap or dust cap
For Panel Thickness Max: 3.0mm
- * Gasket and Nut are packed separately
in PE bags.



| | | | | | | | | | | | | | | | | |
|---|--|--|--|--|----------------|-------------------------------|--|-----------------------------|--|----------------------------|--|--------------------|--|--------------------|--|--|
| UNIT:mm | | | TITLE 18Pin Male Connector Male Pin | | | Amphenol LTW 安費諾亮泰企業股份有限公司 | | ITEM NO CU-18PMMP-SC7002 | | DRAWN BY Ruru | | DATE 2019-03-08 | | | | |
| TOLERANCE .X ±0.25 .XX ±0.1 .XXX ±0.05 ANGLES + | | | SCALE 1:1 | | SIZE A4 | | | SHEET 1 OF 1 | | DWG NO CU-18PMMP-SC7002 | | CHECKED BY Rita | | DATE 2019-03-08 | | |
| | | | REV. C | | WC-REV. A.3 | | | QC: Inspection item | | CUSTOMER ALTW | | APPROVED BY Max | | DATE 2019-03-08 | | |

Mouser Electronics

Authorized Distributor

Click to View Pricing, Inventory, Delivery & Lifecycle Information:

[Amphenol:](#)

[CU-18PMMP-SC7002](#)