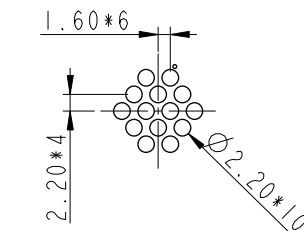
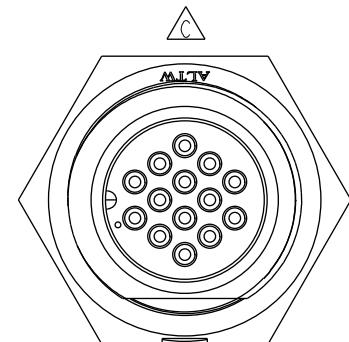
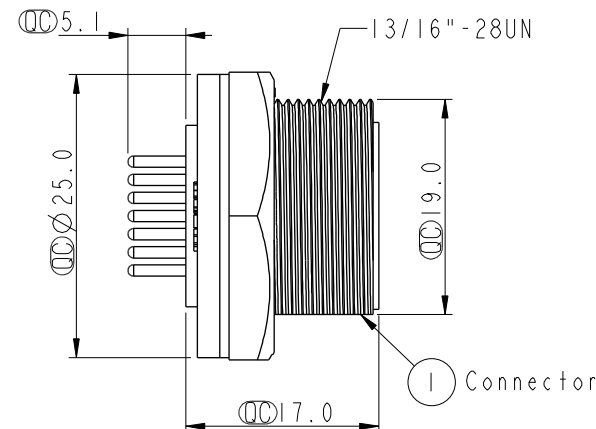
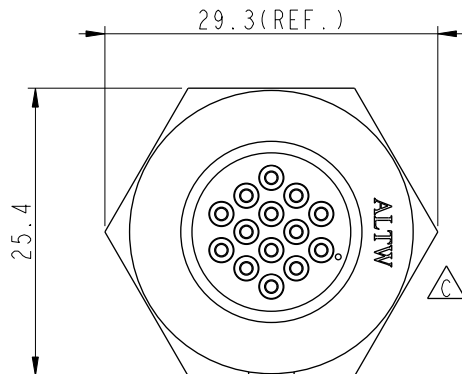
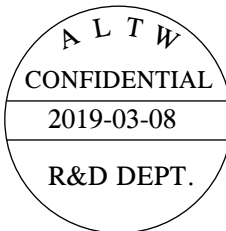
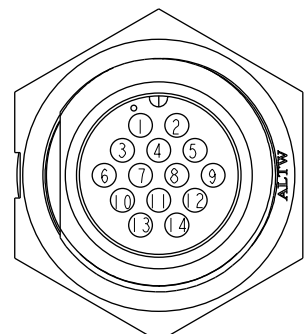


THIS DOCUMENT IS SUBJECT TO CHANGE WITHOUT NOTICE. IT IS CONFIDENTIAL AND A PROPERTY OF Amphenol LTW. DISCLOSURE TO THIRD PARTY HAS TO BE AUTHORIZED BY Amphenol LTW.

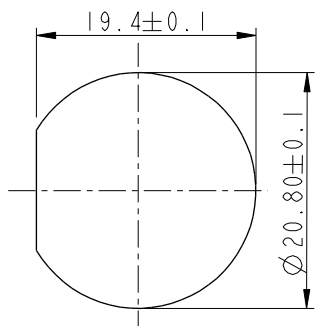
REV.	ECN NO.	DATE	SIGN	DESCRIPTION
B	LEN-8B0152	2008/09/25	Shin	Add Note
C	LEN1530262	2014/12/25	Ruru	Change Logo
D	CI90310	2019/03/08	Ruru	Modify Note



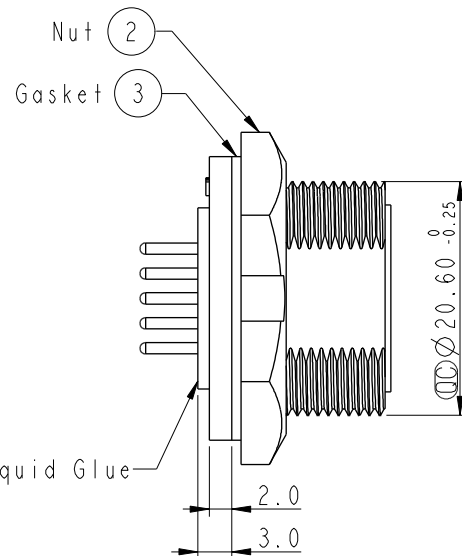
14Pin Male Connector  
Male Pin PCB Layout



Pin Assignments  
Front View



Recommended Panel Cut-Out



- Note:
- \* Important Dimension To Check.
  - \* Waterproof Rate: IP67, Unmated
  - \* Housing: Thermoplastic, Black
  - \* Pin: Copper Alloy, Gold Plated
  - \* Nut: Thermoplastic, Black
  - \* Gasket: Rubber, Black
  - \* Use with waterproof cap or dust cap  
Maximum Panel Thickness: 2.0mm
  - \* Use without waterproof cap or dust cap  
Maximum Panel Thickness: 3.0mm
  - \* Gasket and Nut are packed separately in PE bags.

UNIT:mm		Middle Panel Screw 14Pin M Conn M Pin		Amphenol LTW 安費諾亮泰企業股份有限公司		ITEM NO CD-14PMMP-SC7001	DRAWN BY Ruru	DATE 2019-03-08
TOLERANCE .X ±0.25 .XX ±0.1 .XXX ±0.05 ANGLES ±1°		SCALE 1:1	SIZE A4	SHEET 1 OF 1		DWG NO CD-14PMMP-SC7001	CHECKED BY Rita	DATE 2019-03-08
REV. D		WC-REV. A.3	Inspection item			CUSTOMER ALTW	APPROVED BY Max	DATE 2019-03-08

# Mouser Electronics

Authorized Distributor

Click to View Pricing, Inventory, Delivery & Lifecycle Information:

[Amphenol:](#)

[CD-14PMMP-SC7001](#)