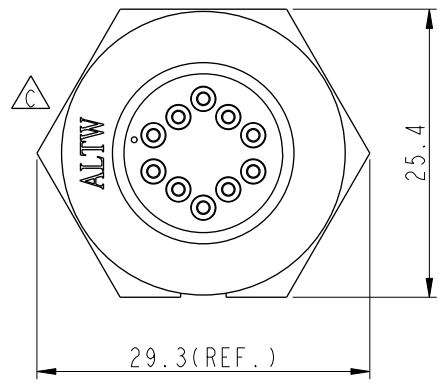
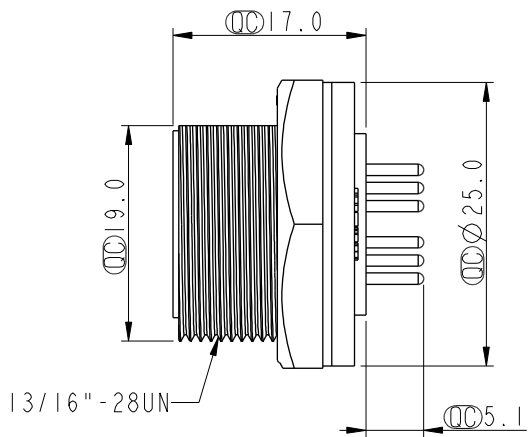
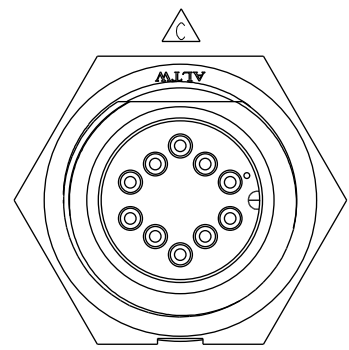
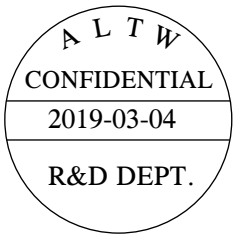
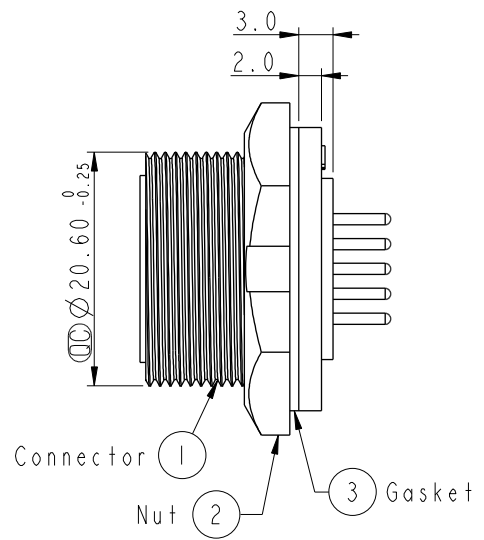
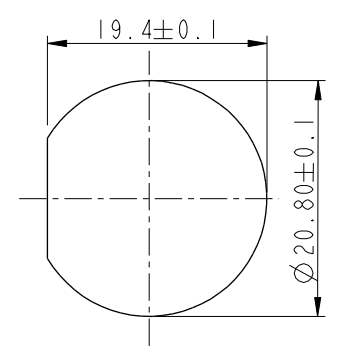
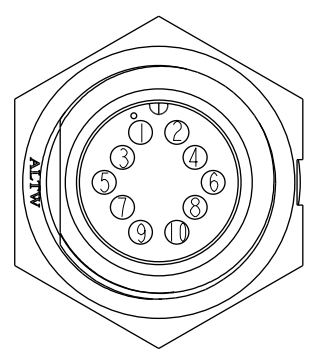


REV.	ECN NO.	DATE	SIGN	DESCRIPTION
B	LEN-8B0140	2008/09/25	Shin	Add Note
C	LEN1630301	2016/03/10	Ruru	Change Logo
D	CI90271	2019/03/04	Ruru	Modify Note



10Pin Male Connector  
Male Pin PCB Layout



- Note:
- \* Important Dimension To Check.
  - \* Waterproof Rate: IP67, Unmated
  - \* Housing: Thermoplastic, Black
  - \* Pin: Copper Alloy, Gold Plated
  - \* Nut: Thermoplastic, Black
  - \* Gasket: Rubber, Black
  - \* Use with waterproof cap or dust cap  
Maximum Panel Thickness: 2.0mm
  - \* Use without waterproof cap or dust cap  
Maximum Panel Thickness: 3.0mm
  - \* Gasket and Nut are packed separately in PE bags.

UNIT:mm		TOLERANCE		TITLE		ITEM NO		DRAWN BY		DATE	
.X ±0.25		.XX ±0.1		Middle		CD-10PMMP-SC7001		Ruru		2019-03-04	
.XXX ±0.05		ANGLES ±1°		Panel Screw 10Pin M Conn M Pin		DWG NO		CHECKED BY		DATE	
REV. D		WC-REV. A.3		SCALE 1:1		CD-10PMMP-SC7001		Rita		2019-03-04	
SHEET 1 OF 1		QC: Inspection item		CUSTOMER		ALTW		APPROVED BY		DATE	
								Max		2019-03-04	

Amphenol LTW  
安費諾亮泰企業股份有限公司

THIS DOCUMENT IS SUBJECT TO CHANGE WITHOUT NOTICE. IT IS CONFIDENTIAL AND A PROPERTY OF Amphenol LTW. DISCLOSURE TO THIRD PARTY HAS TO BE AUTHORIZED BY Amphenol LTW.

# Mouser Electronics

Authorized Distributor

Click to View Pricing, Inventory, Delivery & Lifecycle Information:

[Amphenol:](#)

[CD-10PMMP-SC7001](#)