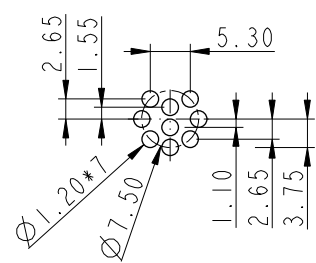
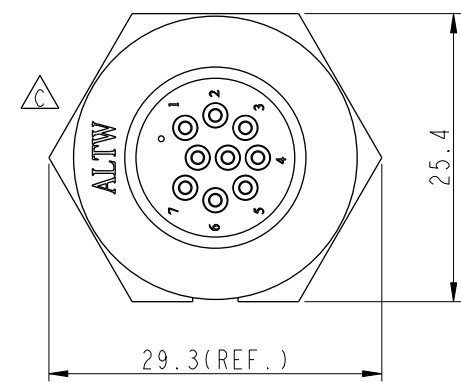
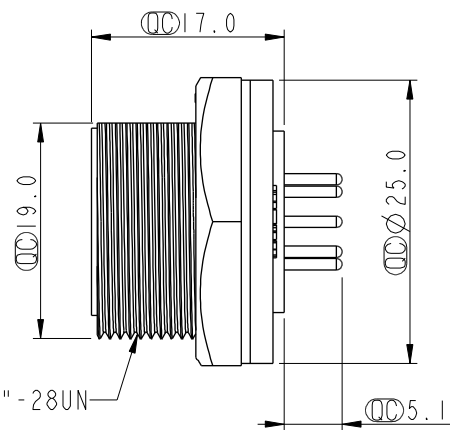
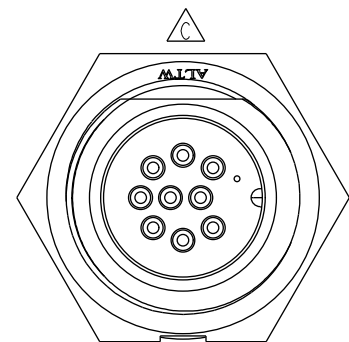
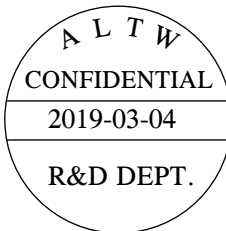
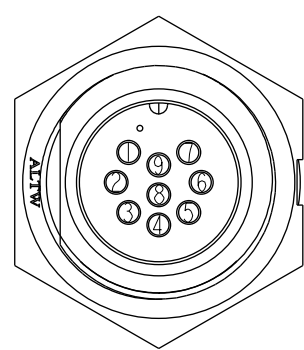


THIS DOCUMENT IS SUBJECT TO CHANGE WITHOUT NOTICE. IT IS CONFIDENTIAL AND A PROPERTY OF Amphenol LTW. DISCLOSURE TO THIRD PARTY HAS TO BE AUTHORIZED BY Amphenol LTW.

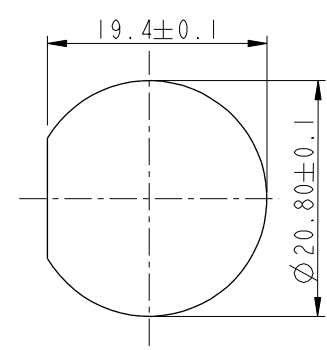
REV.	ECN NO.	DATE	SIGN	DESCRIPTION
B	LEN-8B0134	2008/09/25	Shin	Add Note
C	LEN1650049	2016/04/20	Ruru	Change Logo
D	CI90271	2019/03/04	Ruru	Modify Note



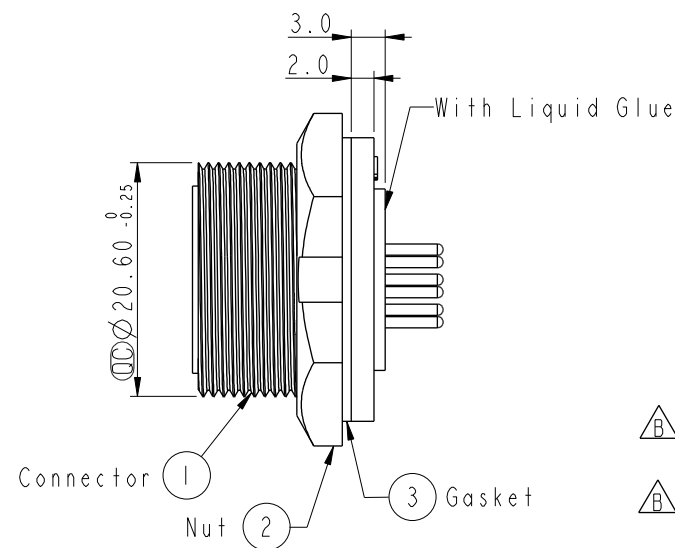
9Pin Male Connector
Female Pin PCB Layout



Pin Assignments
Front View



Recommended Panel Cut-Out



Note:

- * Important Dimension To Check.
- * Waterproof Rate: IP67, Unmated
- * Housing: Thermoplastic, Black
- * Pin: Copper Alloy, Gold Plated
- * Nut: Thermoplastic, Black
- * Gasket: Rubber, Black

- * Use with waterproof cap or dust cap
Maximum Panel Thickness: 2.0mm
- * Use without waterproof cap or dust cap
Maximum Panel Thickness: 3.0mm
- * Gasket and Nut are packed separately
in PE bags.

UNIT:mm		TOLERANCE		TITLE		ITEM NO		DRAWN BY		DATE	
.X ±0.25		.XX ±0.1		Middle		CD-09PMMP-SC7001		Ruru		2019-03-04	
.XXX ±0.05		ANGLES ±1°		Panel Screw 9Pin M Conn M Pin		DWG NO		CHECKED BY		DATE	
REV. D		WC-REV. A.3		SCALE 1:1		CD-09PMMP-SC7001		Rita		2019-03-04	
SHEET 1 OF 1		QC: Inspection item		CUSTOMER		ALTW		APPROVED BY		DATE	
								Max		2019-03-04	

Amphenol LTW
安費諾亮泰企業股份有限公司

Mouser Electronics

Authorized Distributor

Click to View Pricing, Inventory, Delivery & Lifecycle Information:

[Amphenol:](#)

[CD-09PMMP-SC7001](#) [CD-09PMFP-SC7001](#)