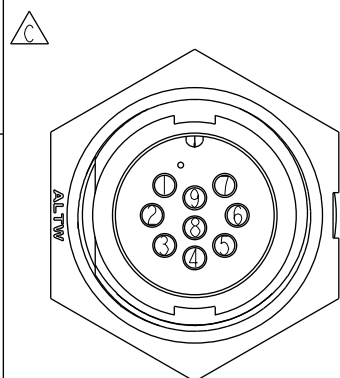
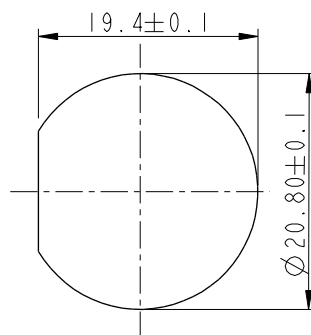


9Pin Male Connector
Female Pin PCB Layout

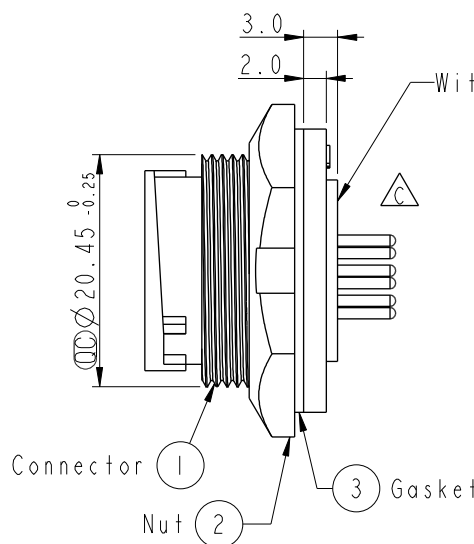


Pin Assignments

Front View





Recommended Panel Cut-Out



—With Liquid Glue

Note: $\triangle D$

- * **Ⓢ**Important Dimension To Check.
- * Waterproof Rate: IP67, Unmated
- * Housing: Thermoplastic, Black
- * Pin: Copper Alloy, Gold Plated
- * Nut: Thermoplastic, Black
- * Gasket: Rubber, Black

-  * Use with waterproof cap or dust cap
Panel Thickness Max: 3.0mm
-  * Use without waterproof cap or dust cap
Panel Thickness Max: 4.0mm
- * Gasket and Nut are packed separately
in PE bags.

UNIT: mm

TOLERANCE	
.X	± 0.25
.XX	± 0.1
.XXX	± 0.05
ANGLES	$\pm 1^{\circ}$

TITLE	Middle
	Panel Lock 9Pin M Conn M Pin

SCALE 1:1	SIZE A4	SHEET 1 OF 1
REV. D	WC-REV. A.3	QC: Inspection item

Amphenol LTW
安費諾亮泰企業股份有限公司

ITEM NO	CD-09PMMP-LC7001	DRAWN BY	Ruru	DATE	2019-03-04
DWG NO	CD-09PMMP-LC7001	CHECKED BY	Rita	DATE	2019-03-04
CUSTOMER	ALTW	APPROVED BY	Max	DATE	2019-03-04

Mouser Electronics

Authorized Distributor

Click to View Pricing, Inventory, Delivery & Lifecycle Information:

[Amphenol:](#)

[CD-09PMMP-LC7001](#) [CD-09PMFP-LC7001](#)