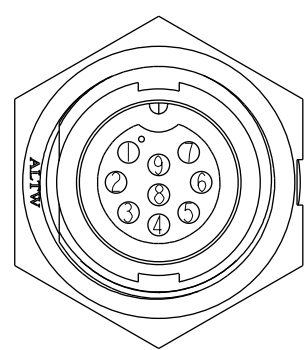
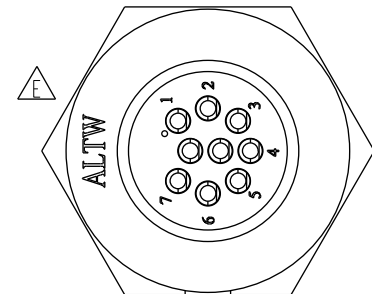
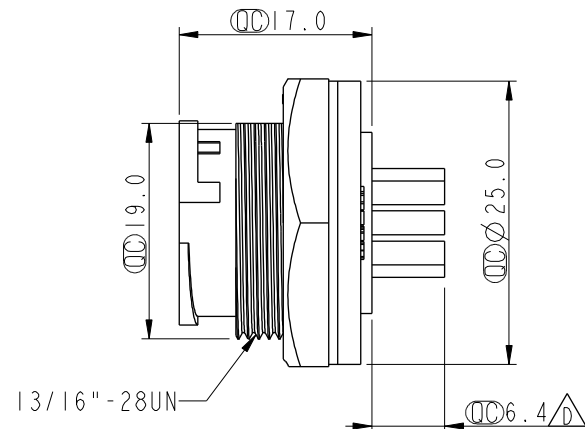
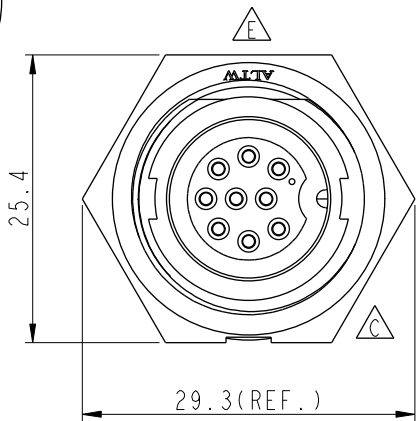
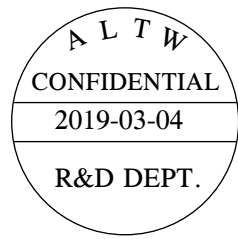
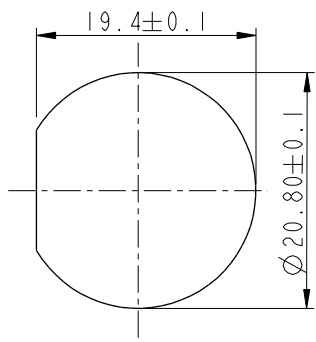


THIS DOCUMENT IS SUBJECT TO CHANGE WITHOUT NOTICE. IT IS CONFIDENTIAL AND A PROPERTY OF Amphenol LTW. DISCLOSURE TO THIRD PARTY HAS TO BE AUTHORIZED BY Amphenol LTW.

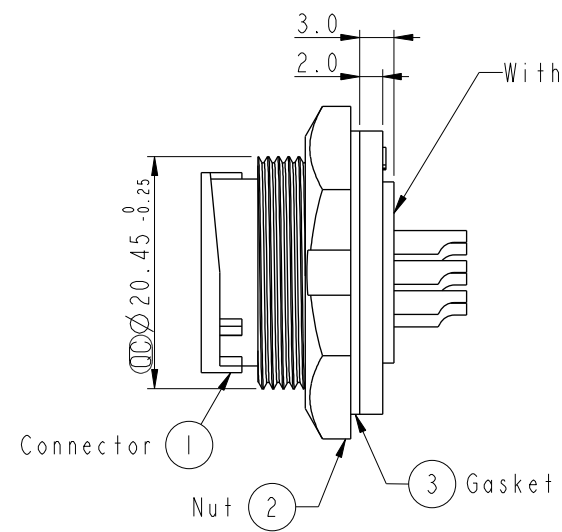
REV.	ECN NO.	DATE	SIGN	DESCRIPTION
D	LEN-910265	2008/01/15	TOMMY	CHANGE PIN DIMENSION
E	LEN1630509	2016/03/16	Ruru	Change Logo
F	CI90271	2019/03/04	Ruru	Modify Note



Pin Assignments  
Front View



Recommended Panel Cut-Out



Note:

\* Important Dimension To Check.

\* Waterproof Rate: IP67, Unmated

\* Housing: Thermoplastic, Black

\* Pin: Copper Alloy, Gold Plated

\* Nut: Thermoplastic, Black

\* Gasket: Rubber, Black

\* Use with waterproof cap or dust cap  
Panel Thickness Max: 3.0mm

\* Use without waterproof cap or dust cap  
Panel Thickness Max: 4.0mm

\* Gasket and Nut are packed separately  
in PE bags.

UNIT:mm		TITLE Middle Panel Lock 9Pin M Conn F Pin			
TOLERANCE		SCALE	SIZE	SHEET	OF
.X ±0.25		1:1	A4	1	1
.XX ±0.1		REV.	WC-REV.		
.XXX ±0.05		F	A.3		
ANGLES ±1°		Inspection item			

**Amphenol LTW**  
安費諾亮泰企業股份有限公司

ITEM NO	CD-09PMFS-LC7001	DRAWN BY	Ruru	DATE	2019-03-04
DWG NO	CD-09PMFS-LC7001	CHECKED BY	Rita	DATE	2019-03-04
CUSTOMER	ALTW	APPROVED BY	Max	DATE	2019-03-04

# Mouser Electronics

Authorized Distributor

Click to View Pricing, Inventory, Delivery & Lifecycle Information:

[Amphenol:](#)

[1CD-09PMFS-LC7001](#)