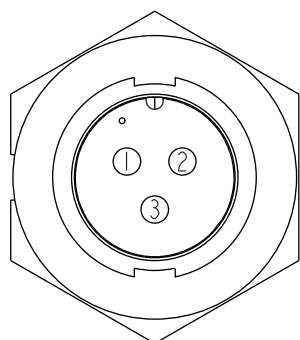
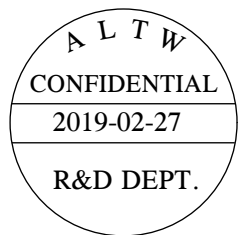
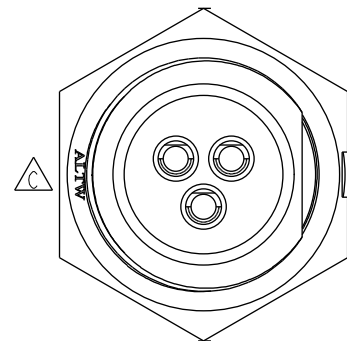
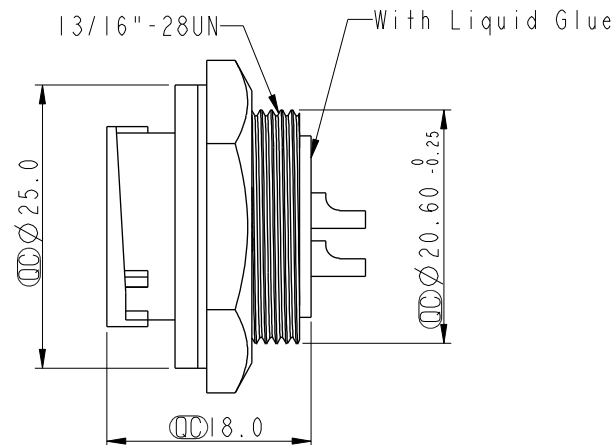
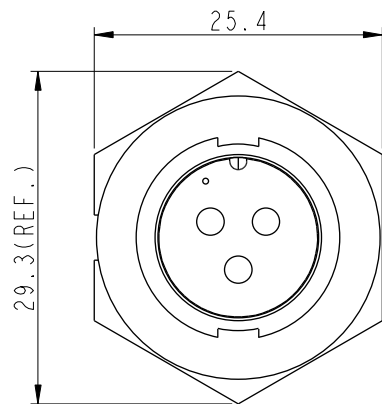
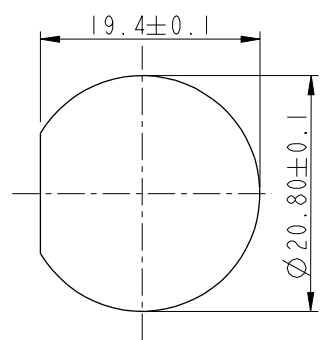


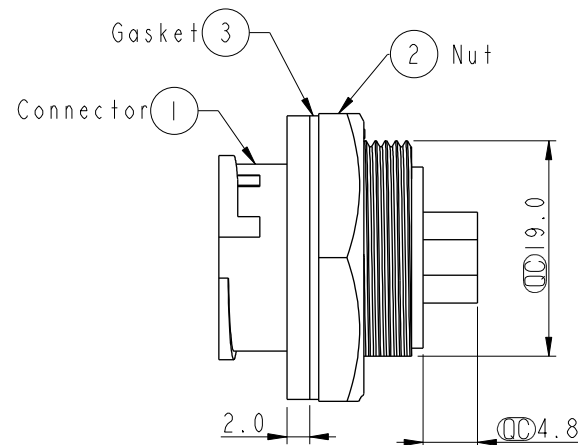
REV.	ECN NO.	DATE	SIGN	DESCRIPTION
B	LEN-8B0230	2008/10/03	Shin	Add Note
C	LEN1530173	2014/12/18	Ruru	Change Logo
D	CI90271	2019/02/27	Ruru	Modify Note



Pin Assignments
Front View



Recommenderd Panel Cut-Out



Note:

- * Important Dimension.
- * Waterproof Rate: IP67, Unmated
- * Housing: Thermoplastic, Black
- * Pin: Copper Alloy, Gold Plated
- * Nut: Thermoplastic, Black
- * Gasket: Rubber, Black
- * Use with waterproof cap or dust cap
Maximum Panel Thickness: 3.0mm
- * Use without waterproof cap or dust cap
Maximum Panel Thickness: 4.0mm
- * Gasket and Nut are packed separately in PE bags.

UNIT:mm		TITLE		Middle, Panel Lock 3Pin M Conn M Pin		ITEM NO		DRAWN BY		DATE	
TOLERANCE		SCALE	SIZE	SHEET	OF	DWG NO		CHECKED BY		DATE	
.X ±0.25		1:1	A4	1	1	CC-03RMMS-LC7001		Ruru		2019-02-27	
.XX ±0.1		REV.	WC-REV.	Inspection item		CC-03RMMS-LC7001		Rita		2019-02-27	
.XXX ±0.05		D	A.4			CUSTOMER		APPROVED BY		DATE	
ANGLES ±1°						ALTW		Max		2019-02-27	

Amphenol LTW
安費諾亮泰企業股份有限公司

THIS DOCUMENT IS SUBJECT TO CHANGE WITHOUT NOTICE. IT IS CONFIDENTIAL AND A PROPERTY OF Amphenol LTW. DISCLOSURE TO THIRD PARTY HAS TO BE AUTHORIZED BY Amphenol LTW.

Mouser Electronics

Authorized Distributor

Click to View Pricing, Inventory, Delivery & Lifecycle Information:

[Amphenol:](#)

[1CC-03RMMS-LC7001](#)