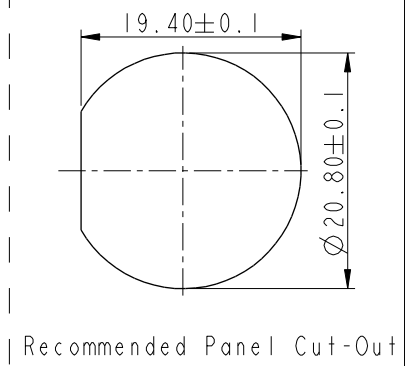


| REV. | ECN NO. | DATE | SIGN | DESCRIPTION |
|------|------------|------------|------------|----------------|
| E | LEN-030235 | 2010/03/25 | Li Xiu Zhi | Delete PIN 位印字 |
| F | LEN1630515 | 2016/03/17 | Ruru | Change Logo |
| G | CI90271 | 2019/02/26 | Ruru | Modify Note |

ALTW
CONFIDENTIAL
2019-02-26
R&D DEPT.



- Note: G
- * Ø Important Dimension.
 - * Waterproof Rate: IP67, Unmated
 - D * Housing: Thermoplastic, Black
 - * Pin 1: Copper Alloy, Gold Plated(10A)
 - * Pin 2: Copper Alloy, Gold Plated(5A)
 - * Nut: Thermoplastic, Black
 - * Gasket: Rubber, Black
 - B * Use with waterproof cap or dust cap
Maximum Panel Thickness:2.0mm
 - B * Use without waterproof cap or dust cap
Maximum Panel Thickness:3.0mm
 - * Gasket and Nut are packed separately in PE bags.

| | | | | | | | | | |
|---|--|---|---|------------------------------|-----------------------------|--------------------|--------------------|--------------------|--|
| UNIT:mm | | TITLE Middle,Panel Screw 8Pin M Conn F Pin | | ITEM NO CBD-08PMFS-SC7001 | | DRAWN BY Ruru | | DATE 2019-02-26 | |
| TOLERANCE .X ±0.25 .XX ±0.1 .XXX ±0.05 ANGLES ±1° | | SCALE 1:1 | SIZE A4 | SHEET 1 | DWG NO CBD-08PMFS-SC7001 | CHECKED BY Rita | DATE 2019-02-26 | | |
| REV. G | | WC-REV. A.3 | Ø : Inspection item | | CUSTOMER ALTW | APPROVED BY Max | DATE 2019-02-26 | | |

Amphenol LTW
安費諾亮泰企業股份有限公司

THIS DOCUMENT IS SUBJECT TO CHANGE WITHOUT NOTICE. IT IS CONFIDENTIAL AND A PROPERTY OF Amphenol LTW. DISCLOSURE TO THIRD PARTY HAS TO BE AUTHORIZED BY Amphenol LTW.

Mouser Electronics

Authorized Distributor

Click to View Pricing, Inventory, Delivery & Lifecycle Information:

[Amphenol:](#)

[CBD-08PMFS-SC7001](#)