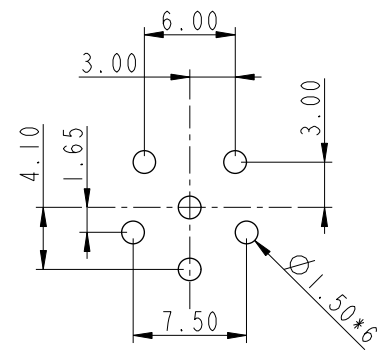
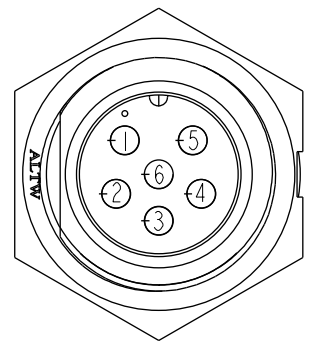
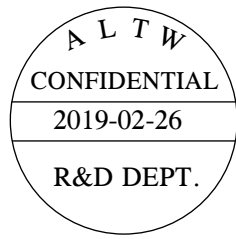
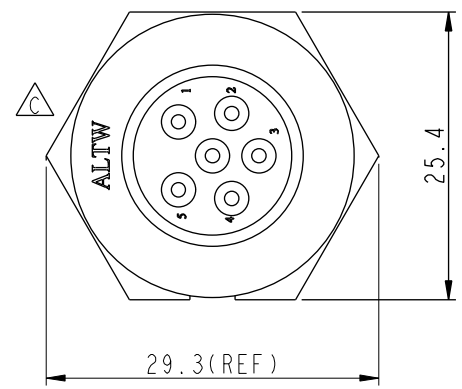
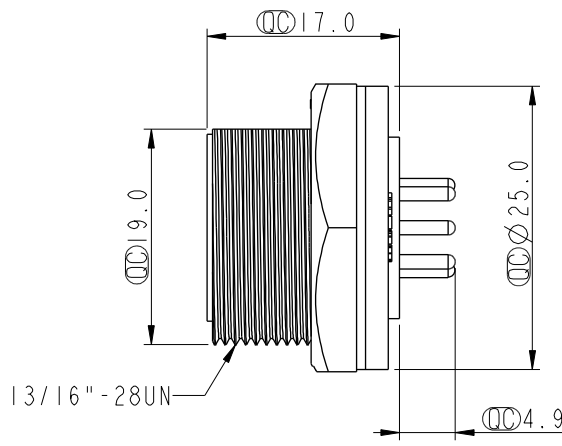
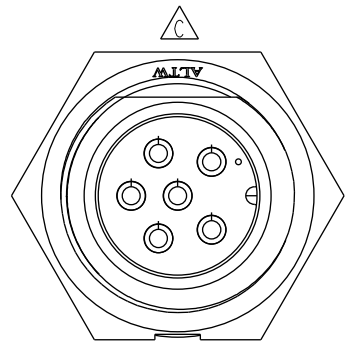


THIS DOCUMENT IS SUBJECT TO CHANGE WITHOUT NOTICE. IT IS CONFIDENTIAL AND A PROPERTY OF AMPHENOL LTW. DISCLOSURE TO THIRD PARTY HAS TO BE AUTHORIZED BY AMPHENOL LTW.

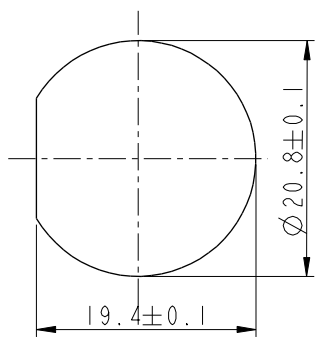
REV.	ECN NO.	DATE	SIGN	DESCRIPTION
B	LEN-8B0108	2008/09/25	Shin	Add Note
C	LEN1630287	2016/03/07	Ruru	Change Logo
D	CI90271	2019/02/26	Ruru	Modify Note



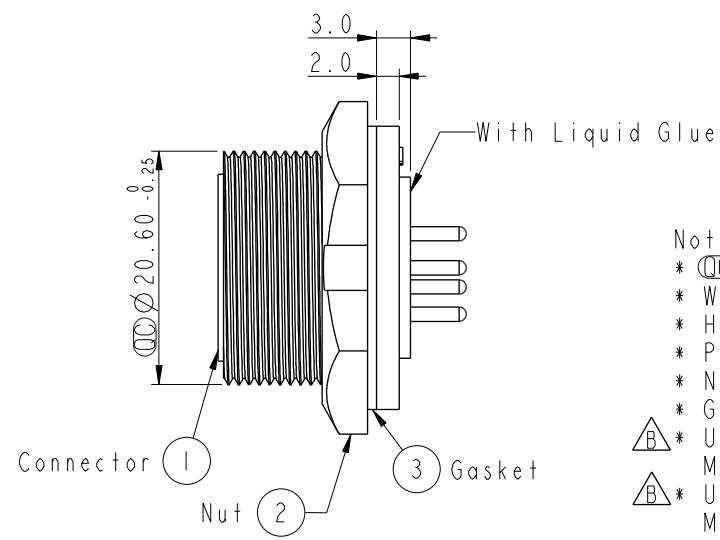
6Pin Male Connector
Male Pin PCB Layout



Pin Assignments
Front View



Recommenderd Panel Cut-Out



- Note: Important Dimension To Check.
- * Waterproof Rate: IP67, Unmated
 - * Housing: Thermoplastic, Black
 - * Pin: Copper Alloy, Gold Plated
 - * Nut: Thermoplastic, Black
 - * Gasket: Rubber, Black
 - * Use with waterproof cap or dust cap
Maximum Panel Thickness: 2.0mm
 - * Use without waterproof cap or dust cap
Maximum Panel Thickness: 3.0mm
 - * Gasket and Nut are packed separately in PE bags.

UNIT:mm		TITLE MIDDLE PANEL SCREW 6PIN M CONN M PIN		Amphenol LTW 安費諾亮泰企業股份有限公司		ITEM NO CB-06PMMP-SC7001	DRAWN BY Ruru	DATE 2019-02-26
TOLERANCE .X ±0.25 .XX ±0.1 .XXX ±0.05 ANGLES ±1°		SCALE 1:1	SIZE A4	SHEET 1 OF 1		DWG NO CB-06PMMP-SC7001	CHECKED BY Rita	DATE 2019-02-26
REV. D		WC-REV. A.3	Inspection item			CUSTOMER ALTW	APPROVED BY Max	DATE 2019-02-26

Mouser Electronics

Authorized Distributor

Click to View Pricing, Inventory, Delivery & Lifecycle Information:

[Amphenol:](#)

[CB-06PMMP-SC7001](#)