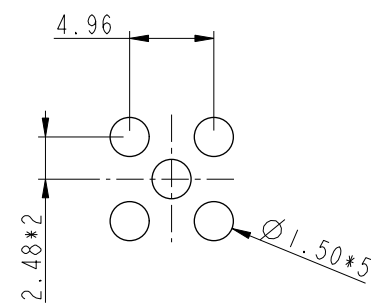
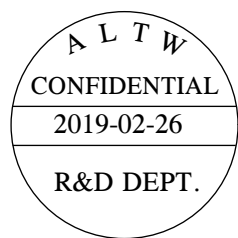
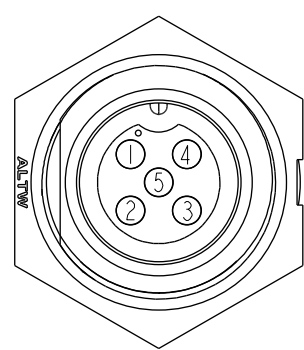
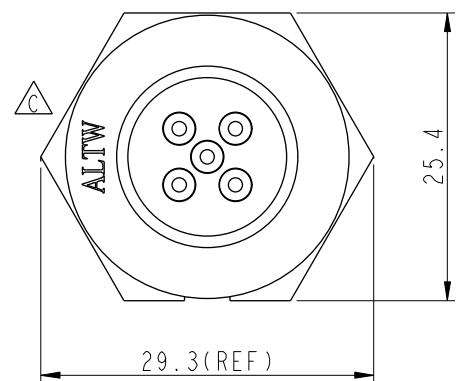
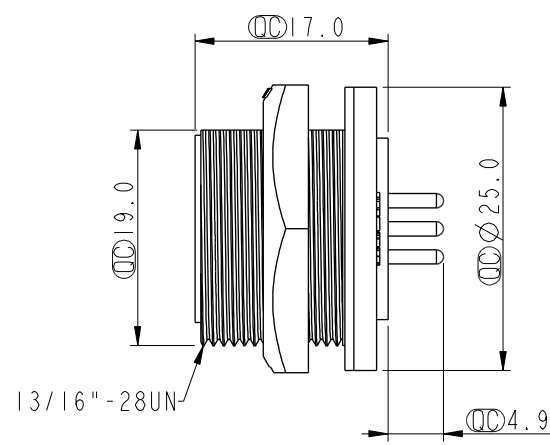
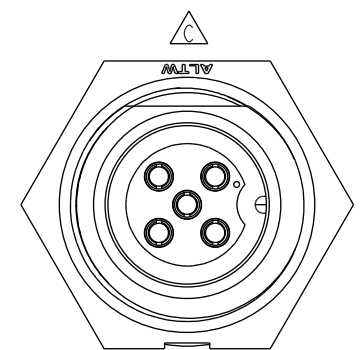


THIS DOCUMENT IS SUBJECT TO CHANGE WITHOUT NOTICE. IT IS CONFIDENTIAL AND A PROPERTY OF Amphenol LTW. DISCLOSURE TO THIRD PARTY HAS TO BE AUTHORIZED BY Amphenol LTW.

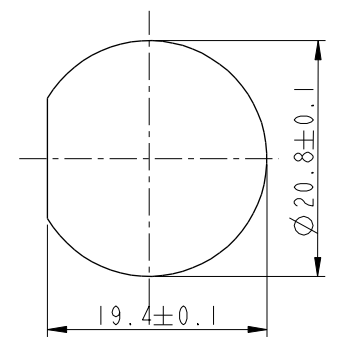
REV.	ECN NO.	DATE	SIGN	DESCRIPTION
B	LEN-8B0202	2008/09/25	Shin	Add Note
C	LEN1630446	2016/03/11	Ruru	Change Logo
D	CI90269	2019/02/26	Ruru	Modify Note



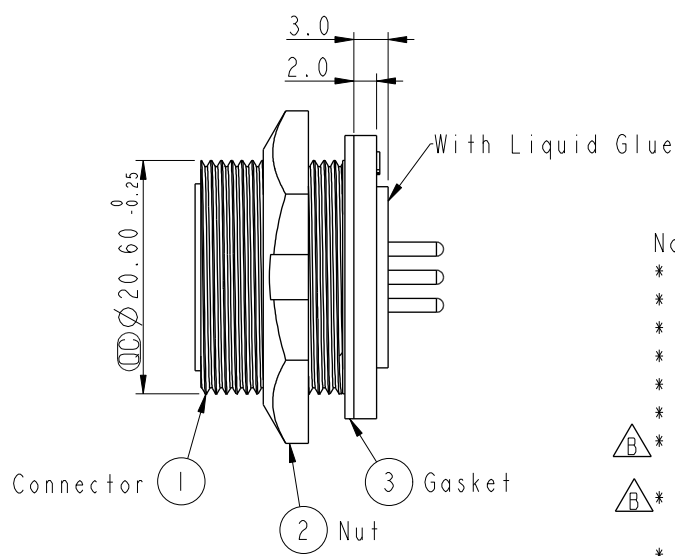
5 Pin Male Connector
Female Pin PCB Layout



Pin Assignments
Front View



Recommenderd Panel Cut-Out



- Note:
- * Important Dimension To Check.
 - * Waterproof Rate: IP67, Unmated
 - * Housing: Thermoplastic, Black
 - * Pin: Copper Alloy, Gold Plated
 - * Nut: Thermoplastic, Black
 - * Gasket: Rubber, Black
 - * Use with waterproof cap or dust cap
Panel Thickness Max: 2.0mm
 - * Use without waterproof cap or dust cap
Panel Thickness Max: 3.0mm
 - * Gasket and Nut are packed separately
in PE bags.

UNIT:mm		TOLERANCE		TITLE		ITEM NO		DRAWN BY		DATE	
.X ±0.25		.XX ±0.1		MIDDLE		CB-05PMFP-SC7001		Ruru		2019-02-26	
.XXX ±0.05		ANGLES ±1°		PANEL SCREW 5PIN M CONN F PIN		DWG NO		CHECKED BY		DATE	
SCALE 1:1		SIZE A4		SHEET 1 OF 1		CB-05PMFP-SC7001		Rita		2019-02-26	
REV. D		WC-REV. A.2		Inspection item		CUSTOMER		APPROVED BY		DATE	
						ALTW		Max		2019-02-26	

Amphenol LTW
安費諾亮泰企業股份有限公司

Mouser Electronics

Authorized Distributor

Click to View Pricing, Inventory, Delivery & Lifecycle Information:

[Amphenol:](#)

[CB-05PMFP-SC7001](#)