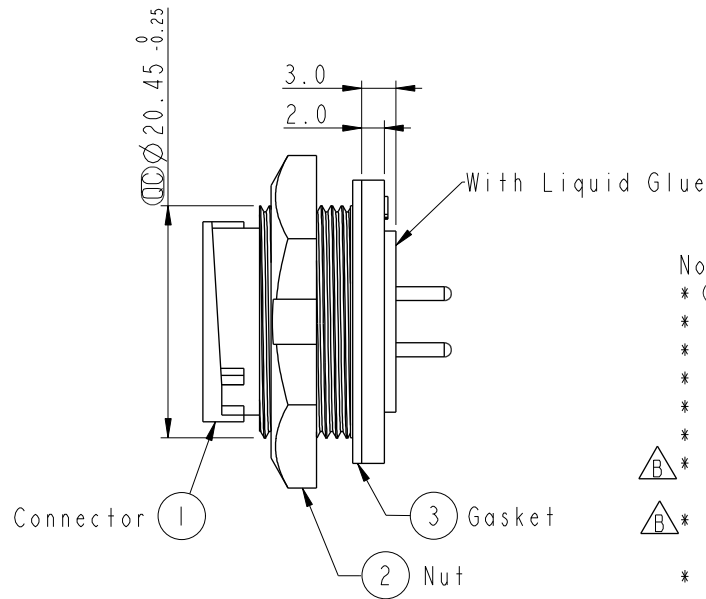
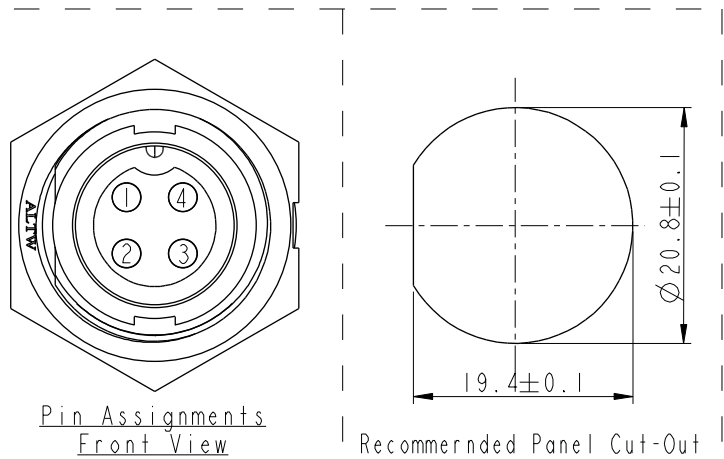
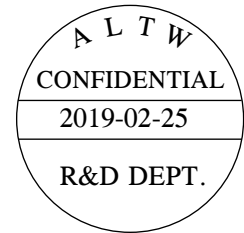
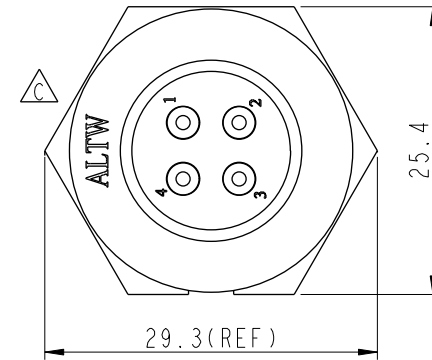
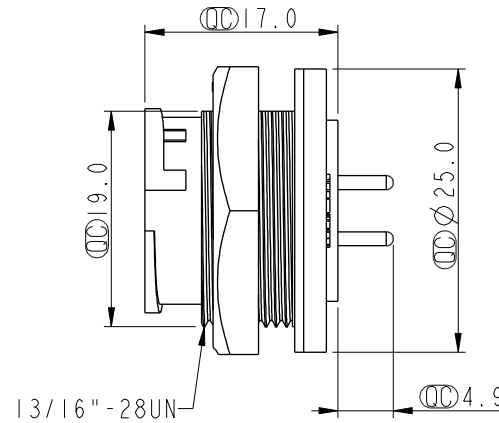
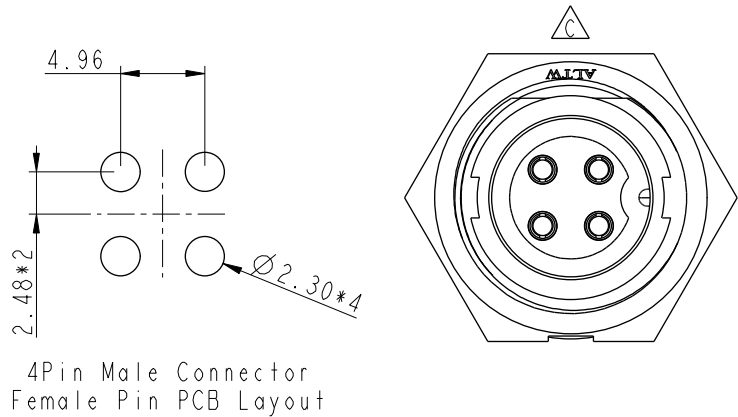


REV.	ECN NO.	DATE	SIGN	DESCRIPTION
B	LEN-8B0159	2008/09/25	Shin	Add Note
C	LEN1630476	2016/03/14	Ruru	Change Logo
D	CI90273	2019/02/25	Ruru	Modify Note



- Notes:
- * Important Dimension To Check.
 - * Waterproof Rate: IP67, Unmated
 - * Housing: Thermoplastic, Black
 - * Pin: Copper Alloy, Gold Plated
 - * Nut: Thermoplastic, Black
 - * Gasket: Rubber, Black
 - * Use with waterproof cap or dust cap
Panel Thickness Max: 3.0mm
 - * Use without waterproof cap or dust cap
Panel Thickness Max: 4.0mm
 - * Gasket and Nut are packed separately
in PE bags.

UNIT:mm		TITLE		ITEM NO		DRAWN BY		DATE	
		MIDDLE		CB-04PMFP-LC7001		Ruru		2019-02-25	
		PANEL LOCK 4PIN M CONN F PIN		DWG NO		CHECKED BY		DATE	
				CB-04PMFP-LC7001		Rita		2019-02-25	
				CUSTOMER		APPROVED BY		DATE	
				ALTW		Max		2019-02-25	

Amphenol LTW

安費諾亮泰企業股份有限公司

THIS DOCUMENT IS SUBJECT TO CHANGE WITHOUT NOTICE. IT IS CONFIDENTIAL AND A PROPERTY OF Amphenol LTW. DISCLOSURE TO THIRD PARTY HAS TO BE AUTHORIZED BY Amphenol LTW.

Mouser Electronics

Authorized Distributor

Click to View Pricing, Inventory, Delivery & Lifecycle Information:

[Amphenol:](#)

[CB-04PMFP-LC7001](#)