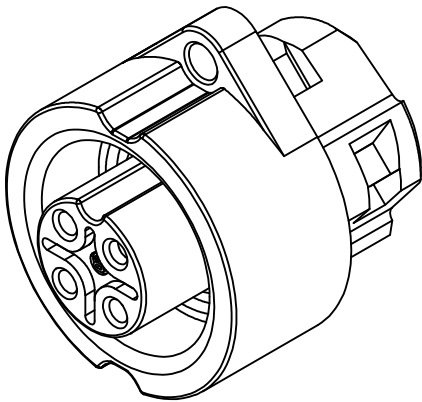


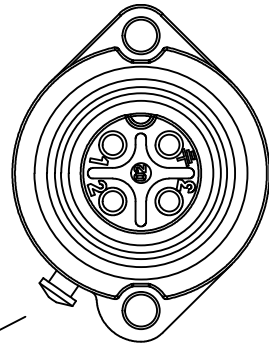
PART NUMBER	LENGTH (METERS)
CA0161F113003	0.3M (0.98 FEET)
CA0161F113005	0.5M (1.64 FEET)
CA0161F113010	1M (3.28 FEET)

REVISIONS						
REV	ZONE	ECO	DESCRIPTION	DATE	BY	CHK APPR
A1	-	-	TECHNICAL DATA SHEET RELEASE	14-JULY-2017	RO	-



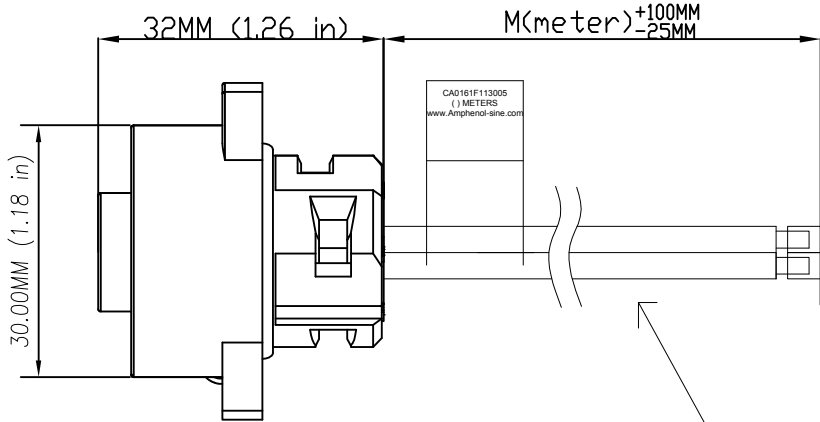
3-D VIEW

CAN BE USED WITH MATING  
CABLE ASSEMBLY #  
CA0161A22303012  
OR CABLE PLUG #  
C01620H00311010



FEMALE RECEPTACLE

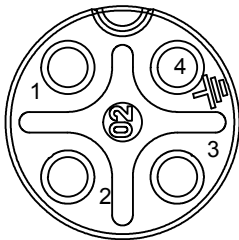
\*PROTECTIVE COVER  
FASTENING STUD.  
COVER NOT INCLUDED,  
P/N: C01600V00000012



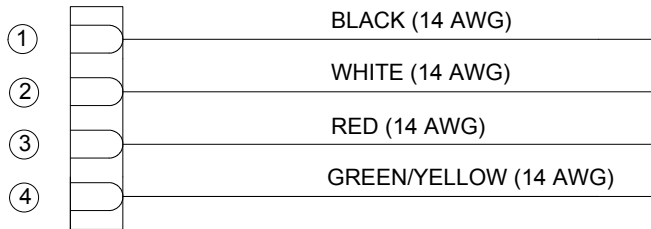
WIRES SEMI-STRIP  
AT 12.7MM (½")

WIRE RATING: UL LISTED TYPE 1015, CSA  
CERTIFIED TYPE TEW, FT1 FLAME RATING,  
105°C WIRE JACKET MATERIAL: PVC

WIRING DIAGRAM

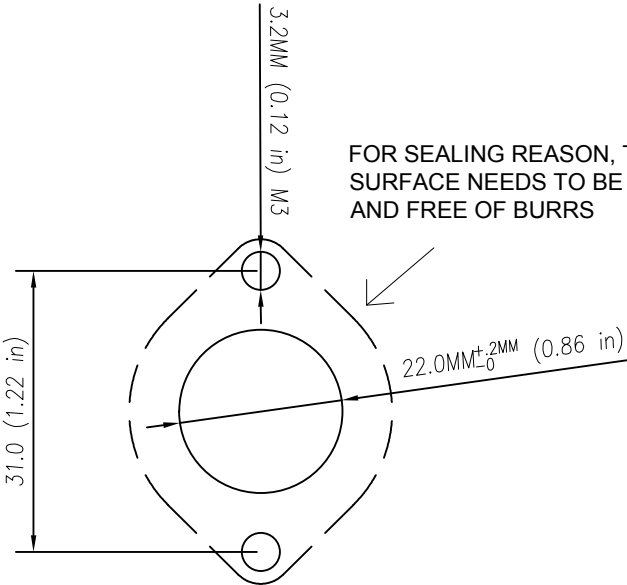


FACE VIEW



TECHNICAL DATA:

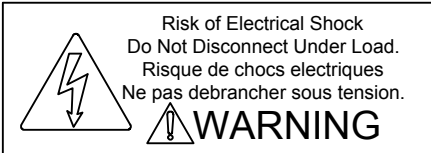
- 1) MATERIALS:  
COUPLING NUT: NYLON PA 6.6  
INSULATION INSERT: NYLON PA 6.6, UL 94/V-0  
CONTACT: SILVER PLATED  
NUMBER OF CONDUCTORS: (4) 14AWG
- 2) ELECTRICAL DATA:  
CURRENT (MAX): 16A  
VOLTAGE (MAX): 400V AC/DC  
INSULATION RESISTANCE (MIN): 100M OHMS  
RATED IMPULSE WITHSTAND VOLTAGE: 6000V
- 3) MECHANICAL DATA:  
TEMPERATURE RANGE: -40°C TO +100°C  
PROTECTION: IP68 (MATED CONDITION)  
MATING CYCLES: >500
- 4) RoHS COMPLIANT



FOR SEALING REASON, THIS  
SURFACE NEEDS TO BE LEVEL  
AND FREE OF BURRS

\*MOUNTING HOLE Ø22  
WITHOUT CHAMFER,  
SUITABLE SEALING FOR  
SCREWS IF NECESSARY.  
TIGHTENING TORQUE  
0.8Nm

PANEL CUT OUT



QUANTITY	PART NUMBER	DESCRIPTION	ITEM
MATERIALS LIST			
UNLESS OTHERWISE SPECIFIED: 1) All dimensions are in metric (mm). 2) Tolerances are as follows: 1 PL DEC ±0.30 2 PL DEC ±0.15 3 PL DEC ±0.08 3) Note reference =		SIGNATURES DRAWN: RO CHECKED: AA ENGINEER: MF APPROVAL: WS MATERIAL SPECIFICATIONS: PROCESS SPECIFICATIONS: NEXT ASSY:	DATE 6-JUNE-17 6-JUNE-17 6-JUNE-17 6-JUNE-17 THIS DRAWING IS SUPPLIED FOR INFORMATION ONLY. DESIGN FEATURES, SPECIFICATIONS AND PERFORMANCE DATA SHOWN HEREON ARE THE PROPERTY OF THE AMPHENOL CORPORATION. NO RIGHTS OF REPRODUCTION ARE IMPLIED. ALL DIMENSIONS ARE SUBJECT TO NORMAL MANUFACTURING VARIATIONS.
Sine Systems - www.amphenol-sine.com 44724 Morley Drive Clinton Township, MI 48036		ECOMATE 7 POS FEMALE RECEPTACLE, 16AWG LEADS, UL1015	REVISION A1
CA0161F1130XX		SIZE C-	DWG NO. CA0161F1130XX
SHEET 1 OF 1		SCALE	REVISION

# Mouser Electronics

Authorized Distributor

Click to View Pricing, Inventory, Delivery & Lifecycle Information:

[Amphenol:](#)

[CA0161F113003](#)