

NOTES:

- DO NOT SCALE THIS DRAWING.
- MATERIALS OF CONSTRUCTION:**
 SHELL, HOUSING, COVER - BRASS (ASTM-B16 H02, C36000), GOLD PLATED (.000003 MIN)
 CONTACT PIN - BRASS (ASTM-B16 H02, C36000) , GOLD PLATED (.000050 MIN)
 INSULATOR - PTFE, ASTM D 1710 OR EQUIV
 GASKET - SILICONE RUBBER, COLOR RED
 CRIMP FERRULE - COPPER ALLOY, GOLD PLATED (.000003 MIN)
 RETAINER RING = BeCu (QQ-C-530), NATURAL
 HEAT SHRINK TUBING

3. PERFORMANCE REQUIREMENTS:

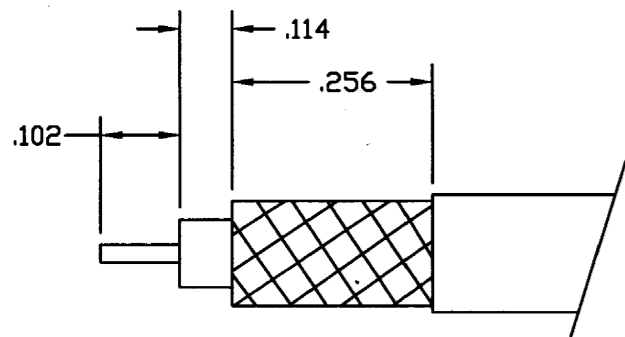
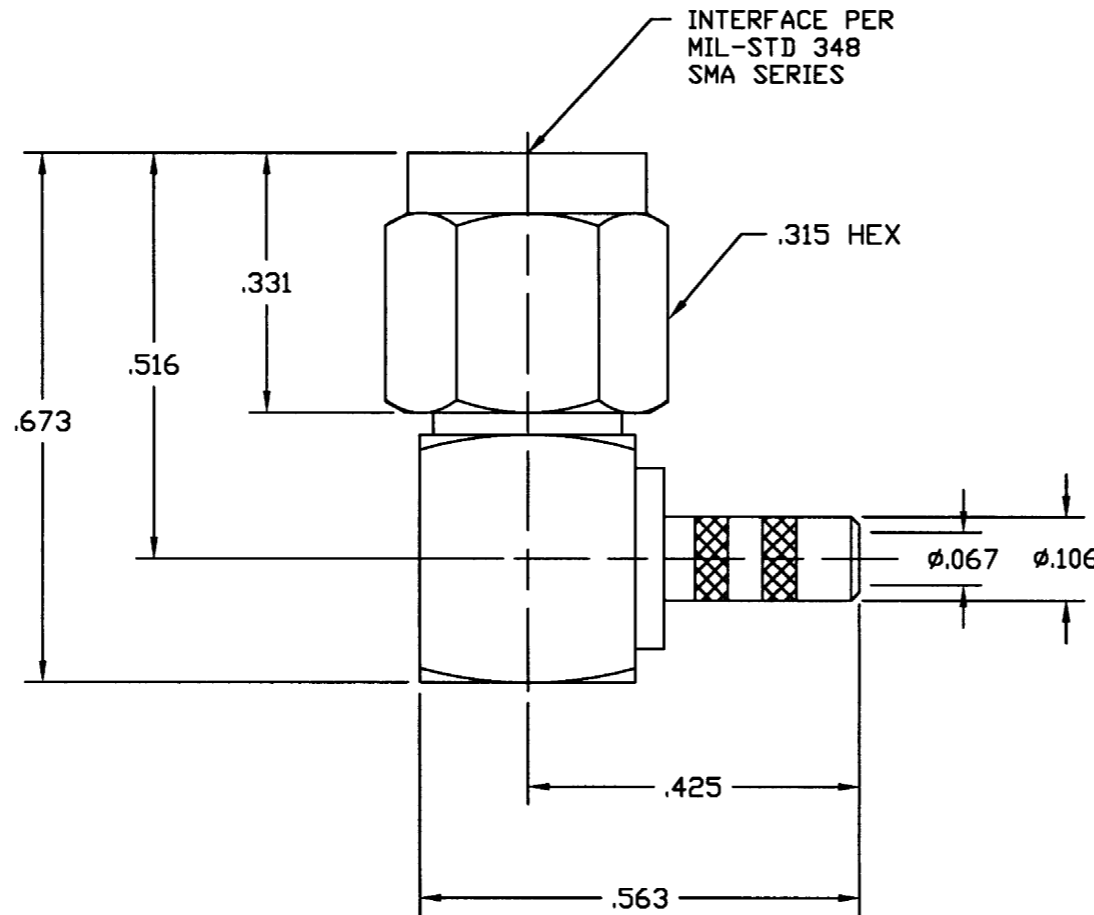
ELECTRICAL:

FREQUENCY RANGE - DC TO 12.4 GHz
 VSWR - 1.500:1 MAX
 DWV - 750 VRMS

MECHANICAL:

CENTER CONTACT RETENTION - 4 LBS MIN

901-9872		REVISIONS			
DRAWING NO.	REV	DESCRIPTION	DATE	ECO	APPR
THIRD ANGLE PROJ.	A	OFFICIAL ENG. RELEASE TO MFG.	4/7/95	40349	PB/RAV
	B	REDRAWN ON AUTO-CAD; ALL NOTES REWRITTEN & UPDATED	8/28/96	41519	CPM/BG
	C	SEE SHEET 1	12/17/98	41519	CPM/
	D	SEE SHEET 1	8-21-02	44182	CPM/



CABLE STRIPPING DIM'S

CUSTOMER OUTLINE DRAWING
 ALL OTHER SHEETS ARE FOR INTERNAL USE ONLY

UNLESS OTHERWISE SPECIFIED, DIMENSIONS ARE IN INCHES AND TOLERANCES ARE: 2 PLACE DECIMAL ±.015 (0,381 mm) 3 PLACE DECIMAL ±.005 (0,127 mm) ANGLES ± 1°	MATERIAL	DRAWN P. BRENZEL ENGINEER RAV APPROVED B. GLEISSNER CAD FILE H:\PETE\SMA\901\ASSY\9872000C	DATE 12/8/94 DATE 3/31/95 DATE 8/23/96	TITLE SMA PLUG RIGHT ANGLE CRIMP TYPE FOR RG-174/U	Amphenol Amphenol Corporation RF/Microwave Operations Danbury, Conn. U.S.A. 06810
	REFERENCE EAR 111-964413 EAR 966277-0	CODE ID 74868 DWG SIZE B DRAWING NO. 901-9872	SCALE: 4:1 SHEET 2 OF 2 REV D		

Mouser Electronics

Authorized Distributor

Click to View Pricing, Inventory, Delivery & Lifecycle Information:

[Amphenol:](#)

[901-9872](#)