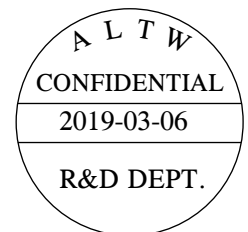
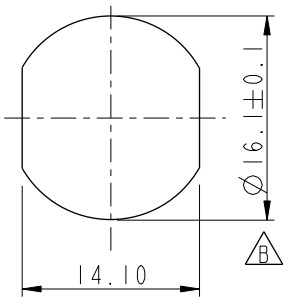


THIS DOCUMENT IS SUBJECT TO CHANGE WITHOUT NOTICE. IT IS CONFIDENTIAL AND A PROPERTY OF Amphenol LTW. DISCLOSURE TO THIRD PARTY HAS TO BE AUTHORIZED BY Amphenol LTW.

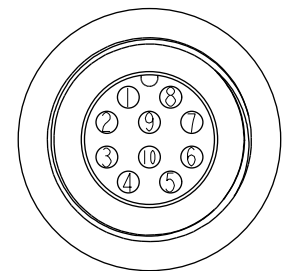
REV.	ECN NO.	DATE	SIGN	DESCRIPTION
B	LEN1830027	2018-03-01	Wen	Correct Panel Cut
C	C190269	2019/03/06	Ruru	Modify Note



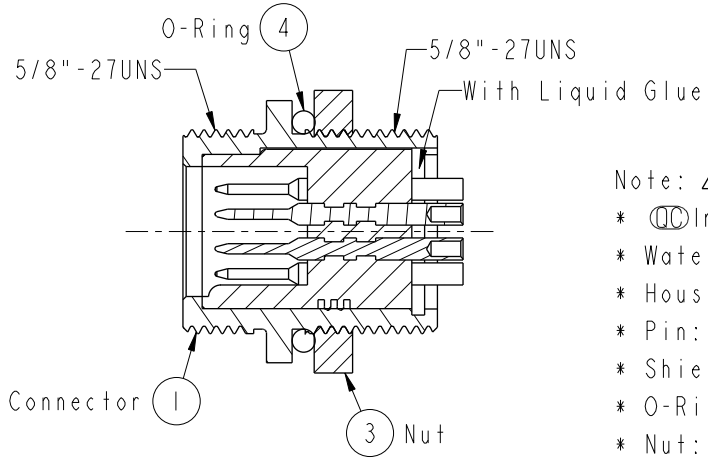
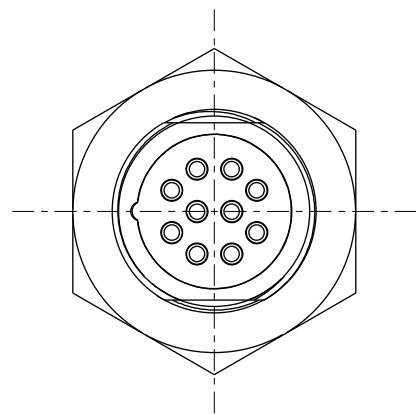
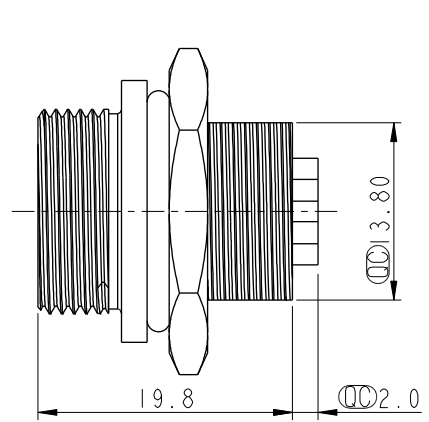
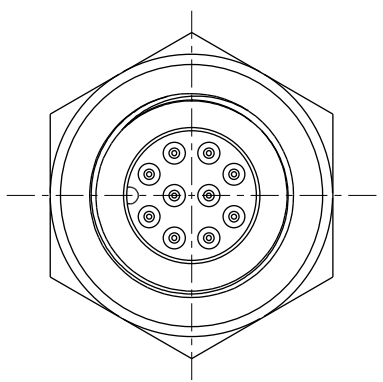
F  
E  
D  
C  
B  
A



Recommended Panel Cut-Out



Pin Assignments  
FrontView 前視圖



- Note:
- \* Important Dimension
  - \* Waterproof Rate: IP67, Unmated
  - \* Housing: Thermoplastic, Black
  - \* Pin: Copper Alloy, Gold Plated
  - \* Shielded: Metal, Nickel Plated
  - \* O-Ring: Rubber, Black
  - \* Nut: Metal, Nickel Plated
  - \* Liquid Glue: Black
  - \* For Panel Thickness Max 7.0mm
  - \* Nut are packed separately in PE bags.

UNIT:mm		TITLE Circular, Panel Screw 10 Pin Male Connector Male Pin(2A)	
TOLERANCE .X ±0.25 .XX ±0.1 .XXX ±0.05 ANGLES ±1°		SCALE 17:10	SIZE A4
REV. C		WC-REV. A.5	SHEET 1 OF 1
		Inspection item	

**Amphenol LTW**  
安費諾亮泰企業股份有限公司

ITEM NO BSU-10RMMS-SC7001	DRAWN BY Ruru	DATE 2019-03-06
DWG NO BSU-10RMMS-SC7001	CHECKED BY Rita	DATE 2019-03-06
CUSTOMER ALTW	APPROVED BY Max	DATE 2019-03-06

# Mouser Electronics

Authorized Distributor

Click to View Pricing, Inventory, Delivery & Lifecycle Information:

[Amphenol:](#)

[BSU-10RMMS-SC7001](#)