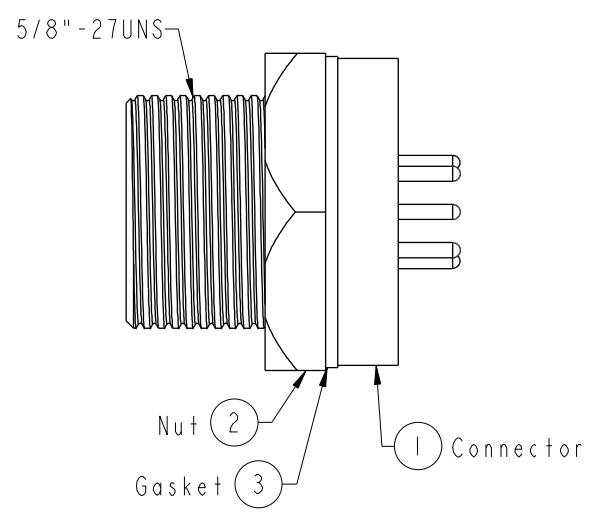
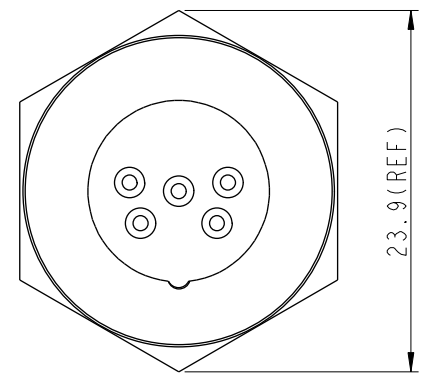
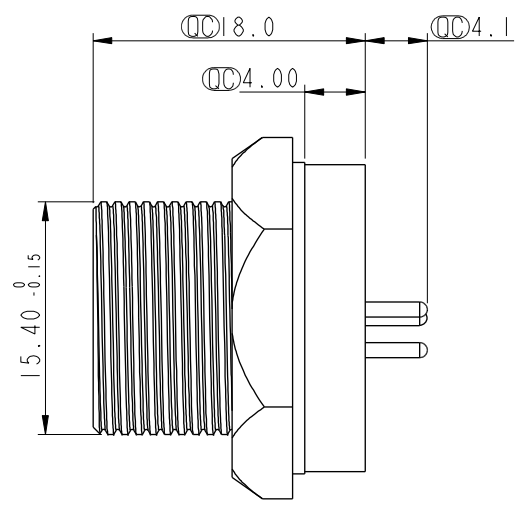
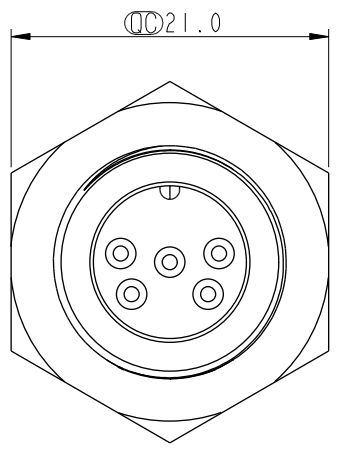


ALTW
CONFIDENTIAL
2019-03-06
R&D DEPT.

REV.	ECN NO.	DATE	SIGN	DESCRIPTION
B	C190269	2019/03/06	Ruru	Modify Note

5 Pin Male Connector
Male Pin PCB Layout



Note: \triangle
* CC Important Dimension To Check.
* Waterproof Rate: IP67, Unmated
* Housing: Metal, Nickel Plated
* Pin: Copper Alloy, Gold Plated
* Nut: Metal, Nickel Plated
* Gasket: Rubber, Black
* Maximum Panel Thickness: 4.4mm
* Gasket and Nut are packed separately in PE bags.

UNIT:mm		TITLE Standard Panel Screw 5Pin M Conn M Pin
TOLERANCE .X ±0.25 .XX ±0.1 .XXX ±0.05 ANGLES ±1°	SCALE 2:1	SIZE A4
	REV. B	SHEET 1 OF 1
	WC-REV. A.2	QC: Inspection item

Amphenol LTW
安費諾亮泰企業股份有限公司

ITEM NO BSD-05PMMP-SC7001	DRAWN BY Ruru	DATE 2019-03-06
DWG NO BSD-05PMMP-SC7001	CHECKED BY Rita	DATE 2019-03-06
CUSTOMER ALTW	APPROVED BY Max	DATE 2019-03-06

THIS DOCUMENT IS SUBJECT TO CHANGE WITHOUT NOTICE. IT IS CONFIDENTIAL AND A PROPERTY OF Amphenol LTW. DISCLOSURE TO THIRD PARTY HAS TO BE AUTHORIZED BY Amphenol LTW.

Mouser Electronics

Authorized Distributor

Click to View Pricing, Inventory, Delivery & Lifecycle Information:

[Amphenol:](#)

[BSD-05PMMP-SC7001](#)