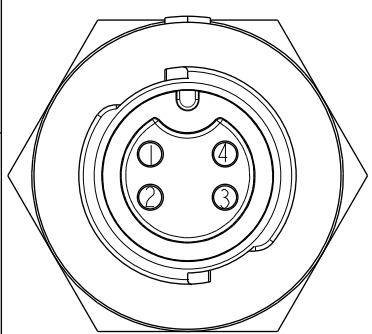
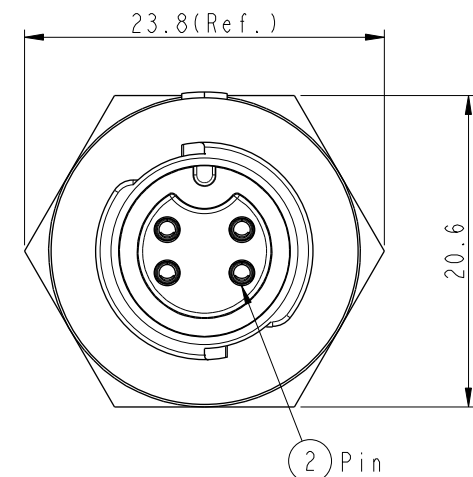
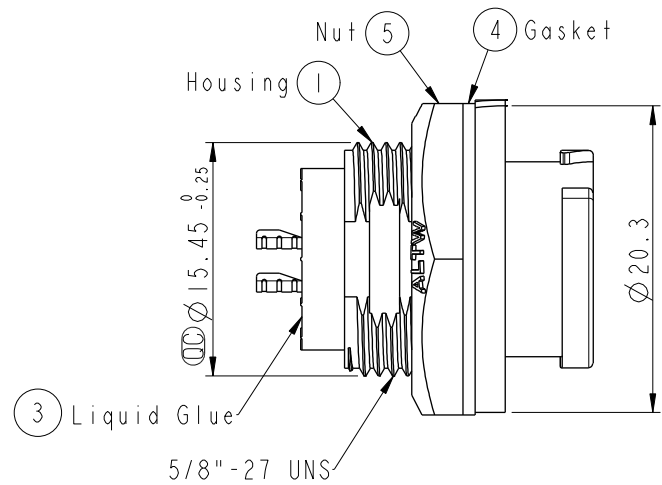
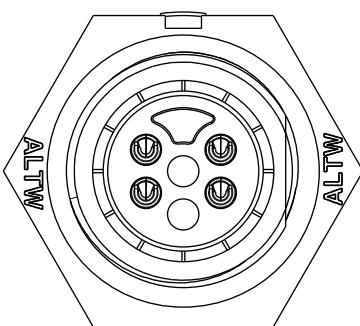


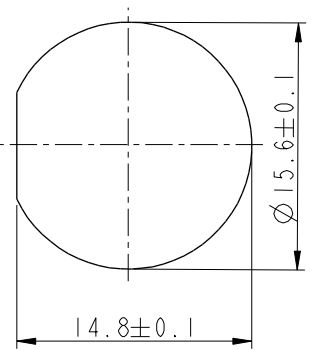
THIS DOCUMENT IS SUBJECT TO CHANGE WITHOUT NOTICE. IT IS CONFIDENTIAL AND A PROPERTY OF Amphenol LTW. DISCLOSURE TO THIRD PARTY HAS TO BE AUTHORIZED BY Amphenol LTW.

REV.	ECN NO.	DATE	SIGN	DESCRIPTION
B	C190411	2019/03/19	Vicky	Change Note

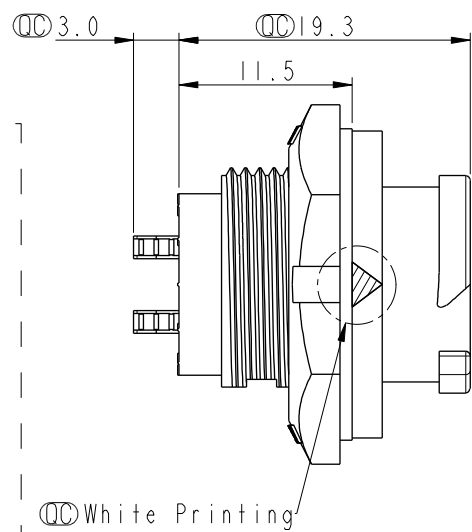
ALTW
CONFIDENTIAL
2019-03-19
R&D DEPT.



Pin Assignments
Front View



Recommended Panel Cut-out



- Note:**
- * \varnothing Important Dimension To Check.
 - * Waterproof Rate: IP68, Unmated.
In 1 meter water within 24 hours
 - * Housing: Thermoplastic, Black.
 - * Pin: Copper Alloy, Gold Plated.
 - * Nut: Thermoplastic, Black.
 - * Gasket: Rubber, Gray.
 - * Panel Thickness Max: 4.5mm
 - * Gasket and Nut are packed separately in PE bags.

UNIT:mm		TOLERANCE .X ±0.25		TITLE X Lok B-Size Receptacle M Conn F 4 Pin		ITEM NO BD-04RMFS-QC8001		DRAWN BY Vicky		DATE 2019-03-19	
SCALE 2:1		SIZE A4		SHEET 1 OF 1		DWG NO BD-04RMFS-QC8001		CHECKED BY Rita		DATE 2019-03-19	
REV. B		WC-REV. A.4		\varnothing Inspection item		CUSTOMER ALTW		APPROVED BY Max		DATE 2019-03-19	
										8 W10814-03-0001A2	

Amphenol LTW
安費諾亮泰企業股份有限公司

Mouser Electronics

Authorized Distributor

Click to View Pricing, Inventory, Delivery & Lifecycle Information:

[Amphenol:](#)

[BD-04RMFS-QC8001](#)