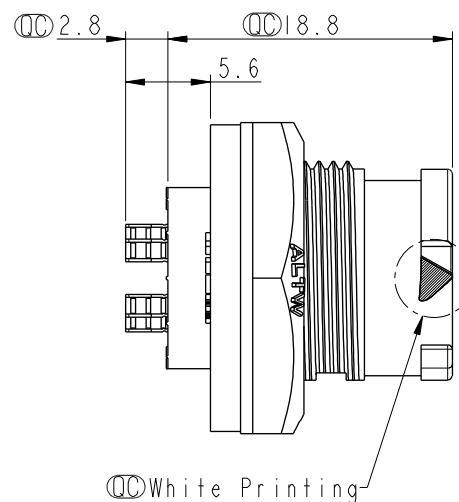
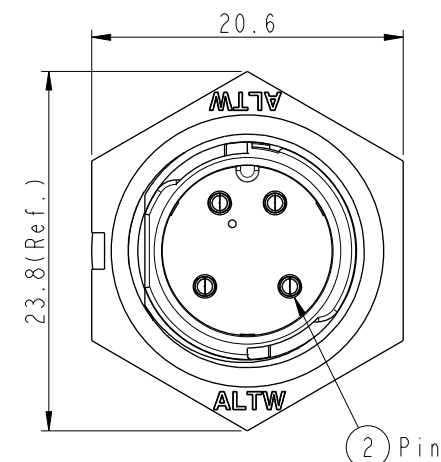
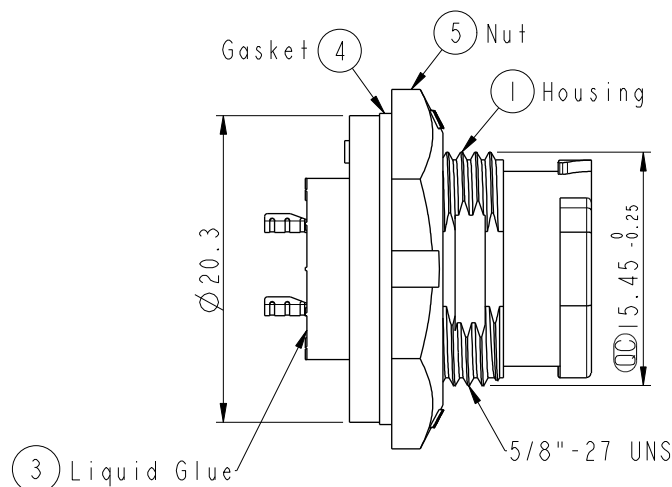
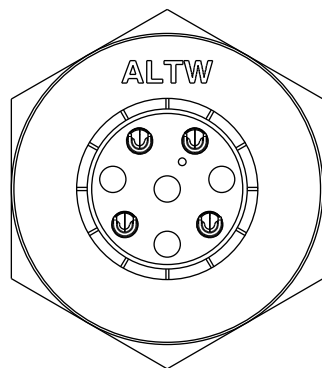
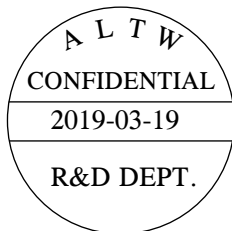
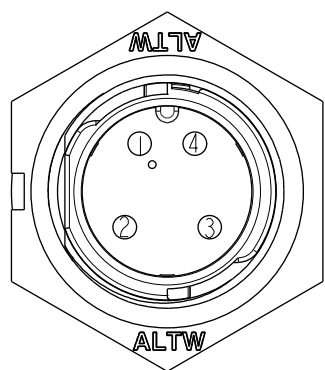


REV.	ECN NO.	DATE	SIGN	DESCRIPTION
B	C190411	2019/03/19	Vicky	Change Note

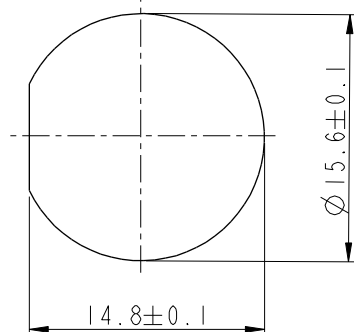


△ Note:

- * QC Important Dimension To Check.
- * Waterproof Rate: IP68, Unmated.
In 1 meter water within 24 hours
- * Housing: Thermoplastic, Black.
- * Pin: Copper Alloy, Gold Plated.
- * Nut: Thermoplastic, Black.
- * Gasket: Rubber, Gary.
- * Use Without Waterproof Cap
Panel Thickness Max: 4.0mm
- * Use With Waterproof Cap
Panel Thickness Max: 3.0mm
- * Gasket and Nut are packed separately
in PE bags.

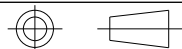


Pin Assignments
Front View



Recommended Panel Cut-out

UNIT:mm



TOLERANCE
X ±0.25

TITLE
X Lok B-Size Receptacle
Front Fastened M Conn M 4 Pin

SCALE 2:1 SIZE A4 SHEET 1 OF 1
REV. B WC-REV. A.4 QC: Inspection item

Amphenol LTW
安費諾亮泰企業股份有限公司

ITEM NO	BD-04PMMS-QC8001	DRAWN BY	Vicky	DATE	2019-03-19
DWG NO	BD-04PMMS-QC8001	CHECKED BY	Rita	DATE	2019-03-19
CUSTOMER	ALTW	APPROVED BY	Max	DATE	2019-03-19

Mouser Electronics

Authorized Distributor

Click to View Pricing, Inventory, Delivery & Lifecycle Information:

[Amphenol:](#)

[BD-04PMMS-QC8001](#)