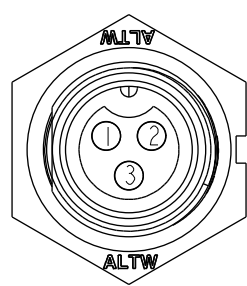
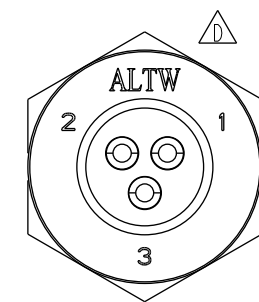
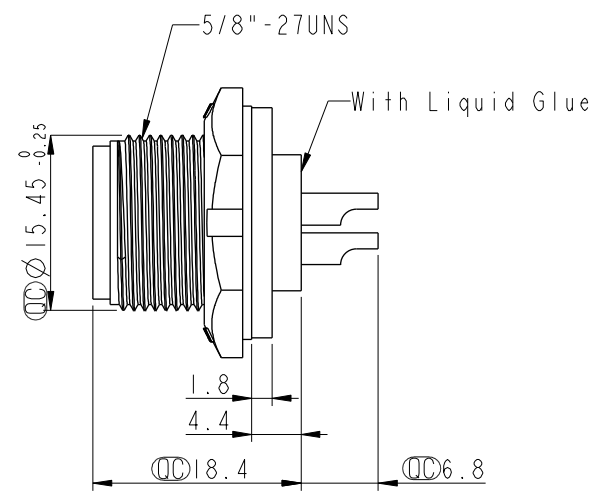
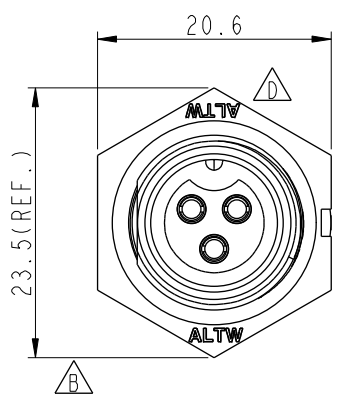
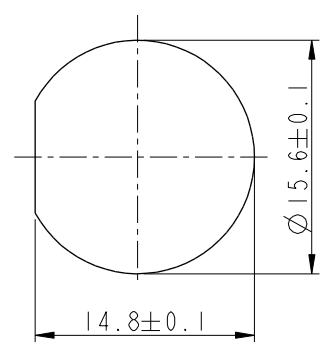


THIS DOCUMENT IS SUBJECT TO CHANGE WITHOUT NOTICE. IT IS CONFIDENTIAL AND A PROPERTY OF Amphenol LTW. DISCLOSURE TO THIRD PARTY HAS TO BE AUTHORIZED BY Amphenol LTW.

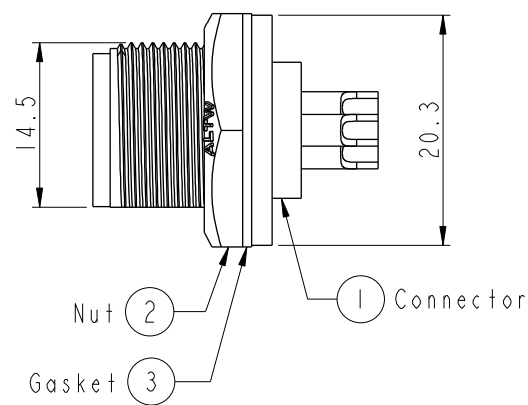
REV.	ECN NO.	DATE	SIGN	DESCRIPTION
C	LEN-8B0428	2008/11/03	Shin	Add Note
D	LEN1730288	2017/03/21	Ruru	Change Logo
E	CI90274	2019/02/20	Ruru	Modify Note



Pin Assignments
Front View



Recommended Panel Cut-Out



- Note:
- * Important Dimensions To Check.
 - * Waterproof Rate: IP67, Unmated
 - * Housing: Thermoplastic, Black
 - * Pin: Copper Alloy, Gold Plated
 - * Nut: Thermoplastic, Black
 - * Gasket: Rubber, Black
 - * Use with Waterproof Cap or Dustcap
Panel Thickness Max: 3.0mm
 - * Use without Waterproof Cap or Dustcap
Panel Thickness Max: 4.0mm
 - * Gasket and Nut are packed separately in PE bags.

UNIT:mm		TOLERANCE		TITLE		ITEM NO		DRAWN BY		DATE	
.X ±0.25		.XX ±0.1		Standard,Panel Screw 3Pin M Conn F Pin		BB-03PMFS-SC7001		Ruru		2019-02-20	
.XXX ±0.05		ANGLES ±1°		SCALE 1:1		DWG NO BB-03PMFS-SC7001		CHECKED BY Rita		DATE 2019-02-20	
				REV. E		CUSTOMER ALTW		APPROVED BY Max		DATE 2019-02-20	
				SIZE A4							
				WC-REV. A.3							
				SHEET 1 OF 1							
				Inspection item							

Amphenol LTW
安費諾亮泰企業股份有限公司

Mouser Electronics

Authorized Distributor

Click to View Pricing, Inventory, Delivery & Lifecycle Information:

[Amphenol:](#)

[1BB-03PMFS-SC7001](#)