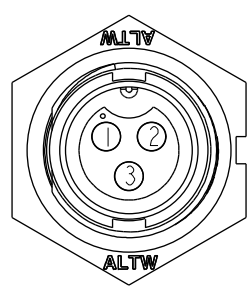
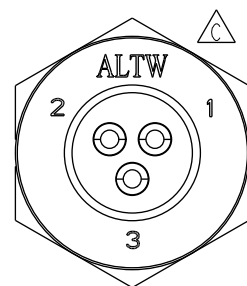
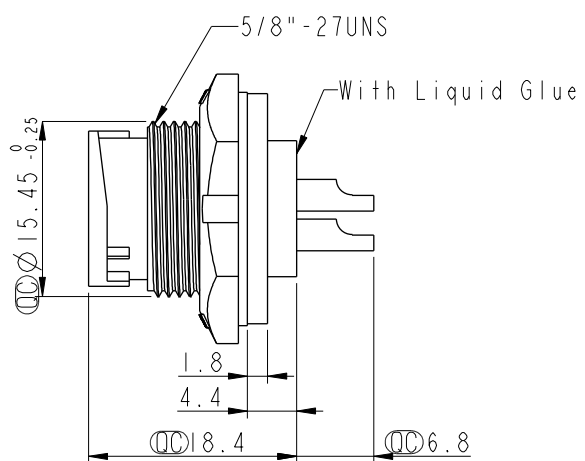
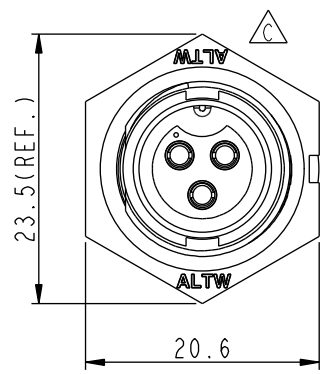
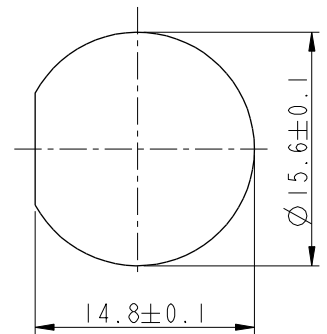


THIS DOCUMENT IS SUBJECT TO CHANGE WITHOUT NOTICE. IT IS CONFIDENTIAL AND A PROPERTY OF Amphenol LTW. DISCLOSURE TO THIRD PARTY HAS TO BE AUTHORIZED BY Amphenol LTW.

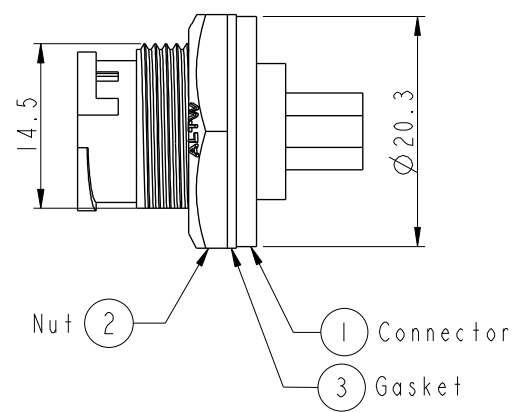
| REV. | ECN NO. | DATE | SIGN | DESCRIPTION |
|------|------------|------------|------|---|
| B | LEN-8B0302 | 2008/09/17 | Shin | Add Note and Update Drawing to New Format |
| C | LEN1730274 | 2017/03/17 | Ruru | Change Logo |
| D | CI90274 | 2019/02/19 | Ruru | Modify Note |



Pin Assignments
Front View



Recommended Panel Cut-Out



- Note:
- * Important Dimensions To Check.
 - * Waterproof Rate: IP67, Unmated
 - * Housing: Thermoplastic, Black
 - * Pin: Copper Alloy, Gold Plated
 - * Nut: Thermoplastic, Black
 - * Gasket: Rubber, Black
 - * Use with Waterproof Cap or Dustcap
Panel Thickness Max: 3.0mm
 - * Use without Waterproof Cap or Dustcap
Panel Thickness Max: 4.5mm
 - * Gasket and Nut are packed separately in PE bags.

| | | | | | | | | | | | |
|------------|--|-------------|--|---------------------------------------|--|-------------------------|--|-----------------|--|-----------------|--|
| UNIT:mm | | TOLERANCE | | TITLE | | ITEM NO | | DRAWN BY | | DATE | |
| .X ±0.25 | | .XX ±0.1 | | Standard,Panel Lock 3Pin M Conn F Pin | | BB-03PMFS-LC7001 | | Ruru | | 2019-02-19 | |
| .XXX ±0.05 | | ANGLES ±1° | | SCALE 1:1 | | DWG NO BB-03PMFS-LC7001 | | CHECKED BY Rita | | DATE 2019-02-19 | |
| REV. D | | WC-REV. A.2 | | SIZE A4 | | CUSTOMER ALTW | | APPROVED BY Max | | DATE 2019-02-19 | |
| | | | | SHEET 1 OF 1 | | | | | | | |
| | | | | QC:Inspection item | | | | | | | |

Amphenol LTW
安費諾亮泰企業股份有限公司

Mouser Electronics

Authorized Distributor

Click to View Pricing, Inventory, Delivery & Lifecycle Information:

[Amphenol:](#)

[1BB-03PMFS-LC7001](#)