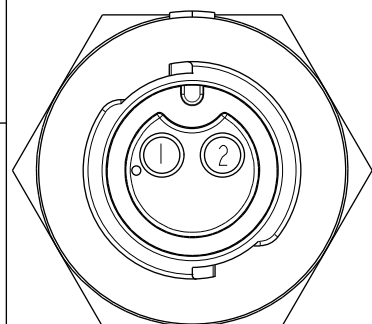
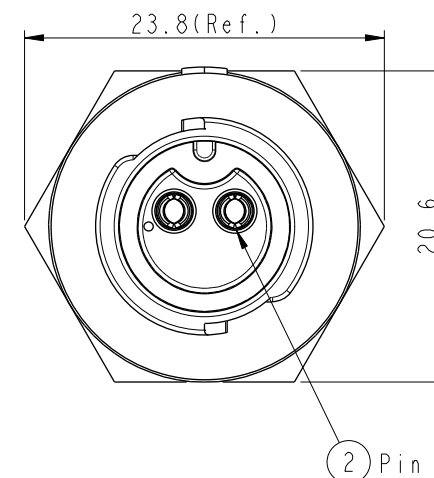
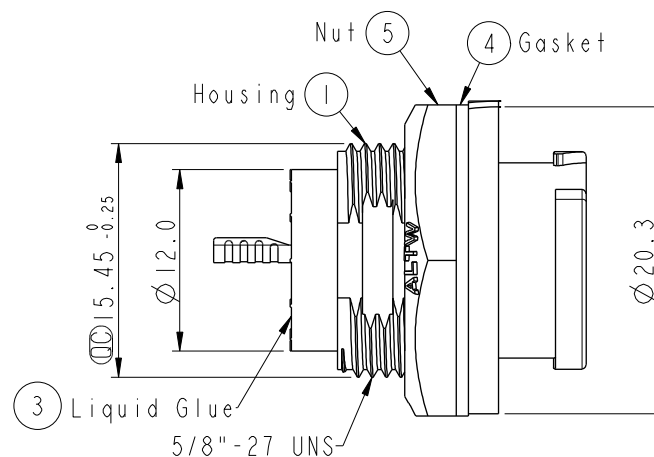
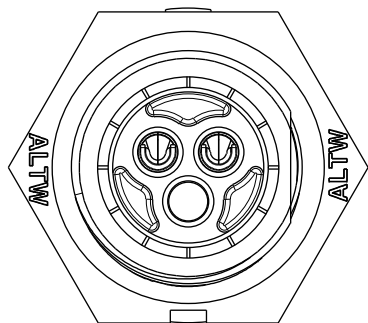
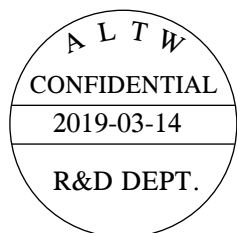
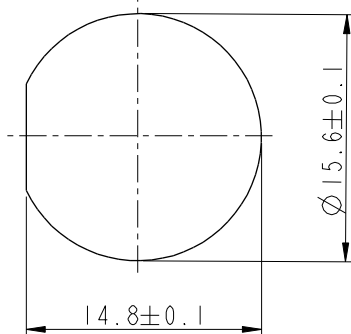


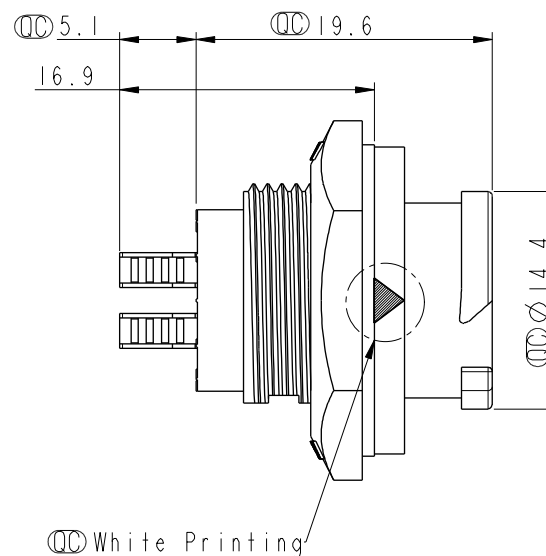
REV.	ECN NO.	DATE	SIGN	DESCRIPTION
B	C190411	2019/03/14	Vicky	Change Note



Pin Assignments
Front View

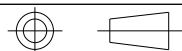


Recommended Panel Cut-out



- Note:**
- * QC Important Dimension To Check.
 - * Waterproof Rate: IP68, Unmated.
In 1 meter water within 24 hours
 - * Housing: Thermoplastic, Black.
 - * Pin: Copper Alloy, Gold Plated.
 - * Nut: Thermoplastic, Black.
 - * Gasket: Rubber, Gray.
 - * Panel Thickness Maximum: 4.5mm
 - * Gasket and Nut are packed separately in PE bags.

UNIT:mm



TOLERANCE
.X ±0.25

TITLE
X Lok B-Size Receptacle
Rear Fastened M Conn F 2 Pin

SCALE 2:1 SIZE A4 SHEET 1 OF 1
REV. B WC-REV. A.1 QC : Inspection item

Amphenol LTW
安費諾亮泰企業股份有限公司

ITEM NO BB-02RMFS-QC800P	DRAWN BY Vicky	DATE 2019-03-14
DWG NO BB-02RMFS-QC800P	CHECKED BY Rita	DATE 2019-03-14
CUSTOMER ALTW	APPROVED BY Max	DATE 2019-03-14

Mouser Electronics

Authorized Distributor

Click to View Pricing, Inventory, Delivery & Lifecycle Information:

[Amphenol:](#)

[BB-02RMFS-QC800P](#)