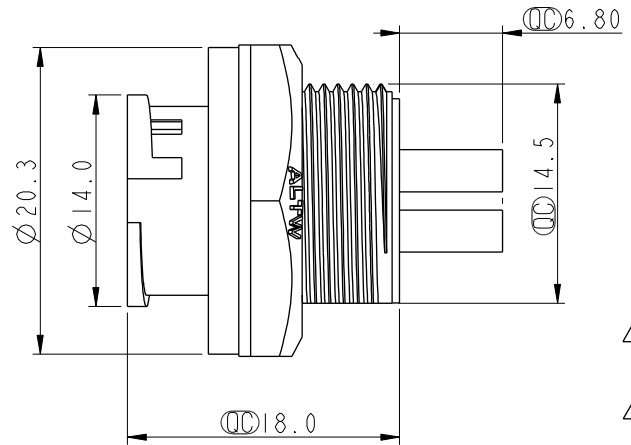
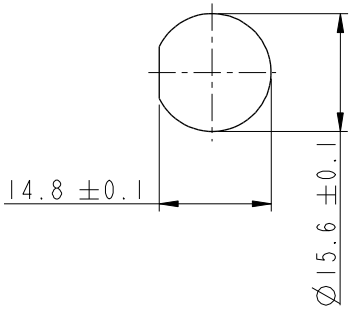
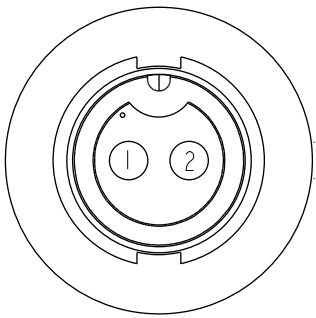
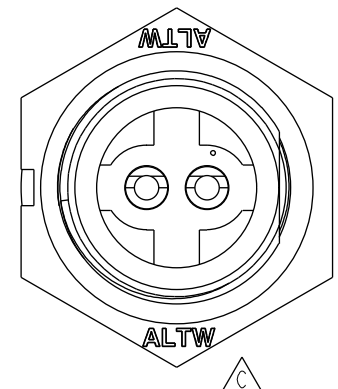
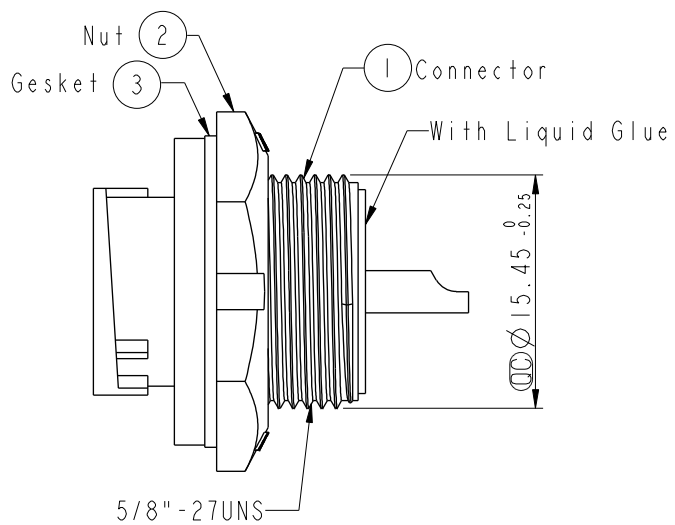
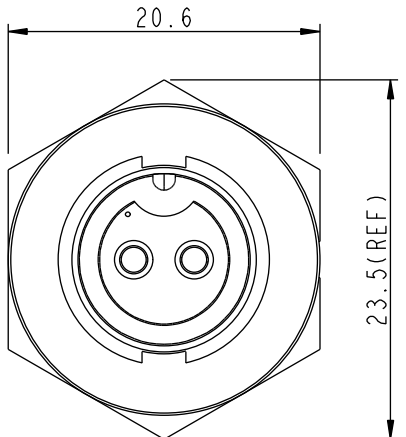






THIS DOCUMENT IS SUBJECT TO CHANGE WITHOUT NOTICE. IT IS CONFIDENTIAL AND A PROPERTY OF Amphenol LTW. DISCLOSURE TO THIRD PARTY HAS TO BE AUTHORIZED BY Amphenol LTW.

REV.	ECN NO.	DATE	SIGN	DESCRIPTION
B	LEN-8B0575	2008/09/22	Shin	Add Note
C	LEN1530239	2014/12/25	Ruru	Change Logo
D	CI90274	2019/02/19	Ruru	Modify Note



- Note: 
- *  Important Dimension To Check.
 - * Waterproof Rate: IP67, Unmated
 - * Housing: Thermoplastic, Black
 - * Pin: Copper Alloy, Gold Plated
 - * Nut: Thermoplastic, Black
 - * Gasket: Rubber, Black
 -  * Use with waterproof cap or dust cap
Panel Thickness Max: 4.0mm
 -  * Use without waterproof cap or dust cap
Panel Thickness Max: 5.0mm
 - * Gasket and Nut are packed separately in PE bags.

UNIT:mm		TOLERANCE		TITLE		ITEM NO		DRAWN BY		DATE	
.X ±0.25		.XX ±0.1		Standard, Rear Lock 2P M Conn F Pin		BB-02RMFS-LC7001		Ruru		2019-02-19	
.XXX ±0.05		ANGLES ±1°		SCALE 1:1		DWG NO BB-02RMFS-LC7001		CHECKED BY Rita		DATE 2019-02-19	
REV. D		WC-REV. A.4		SHEET 1 OF 1		CUSTOMER ALTW		APPROVED BY Max		DATE 2019-02-19	
				QC: Inspection item						8 W10814-03-0001A2	

Amphenol LTW
安費諾亮泰企業股份有限公司

Mouser Electronics

Authorized Distributor

Click to View Pricing, Inventory, Delivery & Lifecycle Information:

[Amphenol:](#)

[1BB-02RMFS-LC7001](#)