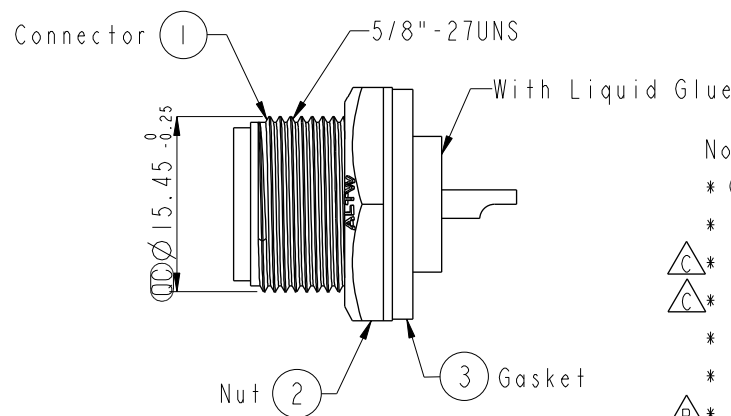
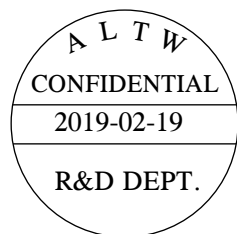
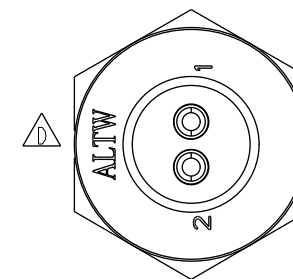
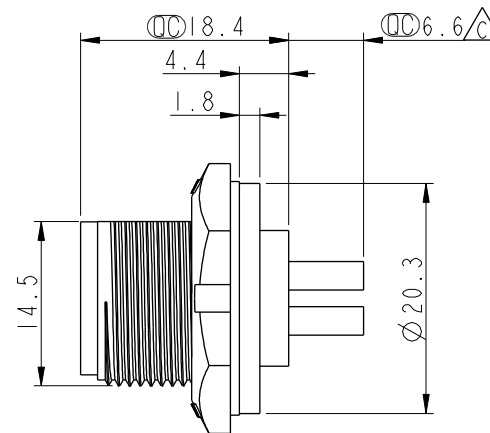
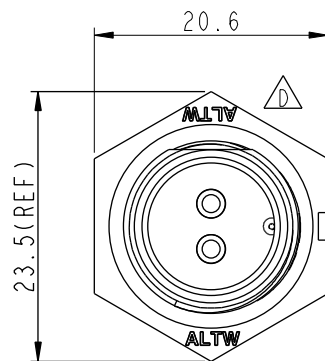


REV.	ECN NO.	DATE	SIGN	DESCRIPTION
C	LEN-910219	2009/01/06	Li Xiu Zhi	Change 6.5 to 6.6
D	LEN1730276	2017/03/17	Ruru	Change Logo
E	CI90274	2019/02/19	Ruru	Modify Note



Note:

\* Important Dimension To Check.

\* Waterproof Rate: IP67, Unmated

\* Housing: Thermoplastic, Black

\* Pin: Copper Alloy, Gold Plated

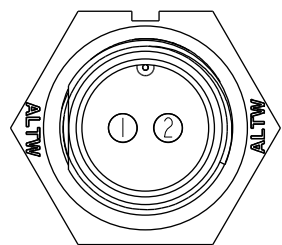
\* Nut: Thermoplastic, Black

\* Gasket: Rubber, Black

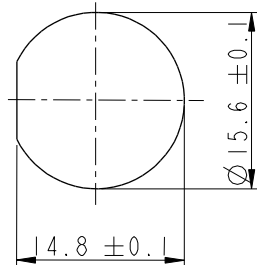
\* Use with waterproof cap or dust cap  
Panel Thickness Max: 3.0mm

\* Use without waterproof cap or dust cap  
Panel Thickness Max: 4.0mm

\* Gasket and Nut are packed separately  
in PE bags.



Pin Assignments  
Front View



Recommended Panel Cut-Out

UNIT:mm	
TOLERANCE	
.X	±0.25
.XX	±0.1
.XXX	±0.05
ANGLES	±1°

TITLE Standard Panel Screw 2Pin M Conn. M Pin			
SCALE 1:1	SIZE A4	SHEET 1 OF 1	
REV. E	WC-REV. A.3	Inspection item	

**Amphenol LTW**  
安費諾亮泰企業股份有限公司

ITEM NO BB-02PMMS-SC7001	DRAWN BY Ruru	DATE 2019-02-19
DWG NO BB-02PMMS-SC7001	CHECKED BY Rita	DATE 2019-02-19
CUSTOMER ALTW	APPROVED BY Max	DATE 2019-02-19

# Mouser Electronics

Authorized Distributor

Click to View Pricing, Inventory, Delivery & Lifecycle Information:

[Amphenol:](#)

[1BB-02PMMS-SC7001](#)