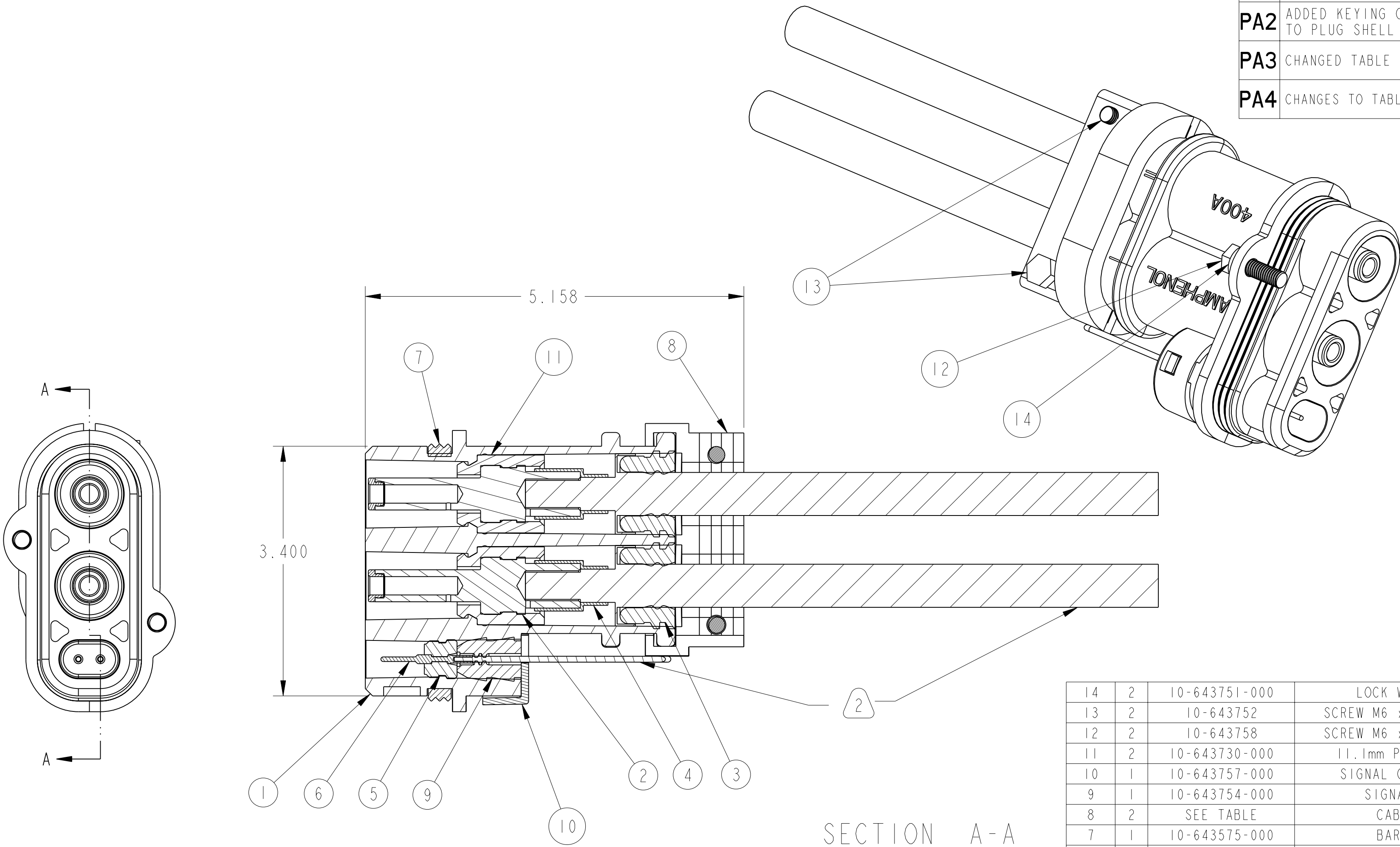


10-643577		
REVISIONS		
LTR	DESCRIPTION	DATE
PA1	PRELIMINARY DRAWING	6-21-10
PA2	ADDED KEYING OPTIONS TO PLUG SHELL	7-6-10
PA3	CHANGED TABLE	07-19-10
PA4	CHANGES TO TABLE/PART OPTIONS	03-17-11



14	2	10-643751-000	LOCK WASHER - M6	
13	2	10-643752	SCREW M6 x 1 - 30mm LONG	4
12	2	10-643758	SCREW M6 x 1 - 20mm LONG	4
11	2	10-643730-000	11.1mm PIN INSULATION	
10	1	10-643757-000	SIGNAL GROMMET COVER	
9	1	10-643754-000	SIGNAL GROMMET	
8	2	SEE TABLE	CABLE CLAMP	1
7	1	10-643575-000	BARREL SEAL	
6	2	10-040557-000	SIGNAL CONTACT, SIZE 16	
5	1	10-643738-000	SIGNAL CONTACT INSERT	
4	SEE NOTE 3	SEE TABLE	HEAT SHRINK TUBING	1/3
3	2	SEE TABLE	POWER CABLE GROMMET	1
2	2	SEE TABLE	11.1mm PIN CONTACT ASSM	1
1	1	SEE TABLE	PLUG SHELL	1
POS	QTY	PART NUMBER	DESCRIPTION	NOTE

UNLESS OTHERWISE SPECIFIED

LINEAR DIMENSIONS ARE IN INCHES  
TOLERANCES:  
.XXXX = ±.0005 ANGLES= ±2°  
.XXX = ±.010  
.XX = ±.03  
.X = ±.1

DIM. & TOL. PER ASME Y14.5M;  
DRM PER MIL-DTL-31000;  
OTHER Amphenol Sds. PER 9-3800

LEGENDS:  
= FLAG NOTE CALL OUT  
REFERENCE ONLY

SPECIFICATIONS

MATERIAL SPEC.  
N/A  
-

PROCESS SPEC.  
N/A  
-

APPROVALS

PREPARED BY R BALDWIN  
ENGINEER IN CHARGE A POLISHAK  
DESIGN MANAGER S FITZGERALD  
DESIGN ACTIVITY GROUP C&I

DATE 17-Mar-11

THIRD ANGLE PROJECTION

PARTS LIST

AMPHENOL CORPORATION  
40-60 DELAWARE AVENUE  
SIDNEY, N.Y. 13838

PLUG ASSEMBLY  
400A - ePower  
2-PIN

SIZE C  
CAGE CODE 77820  
SCALE: 0.9

DOCUMENT NO. 10-643577  
REF: 10-643579

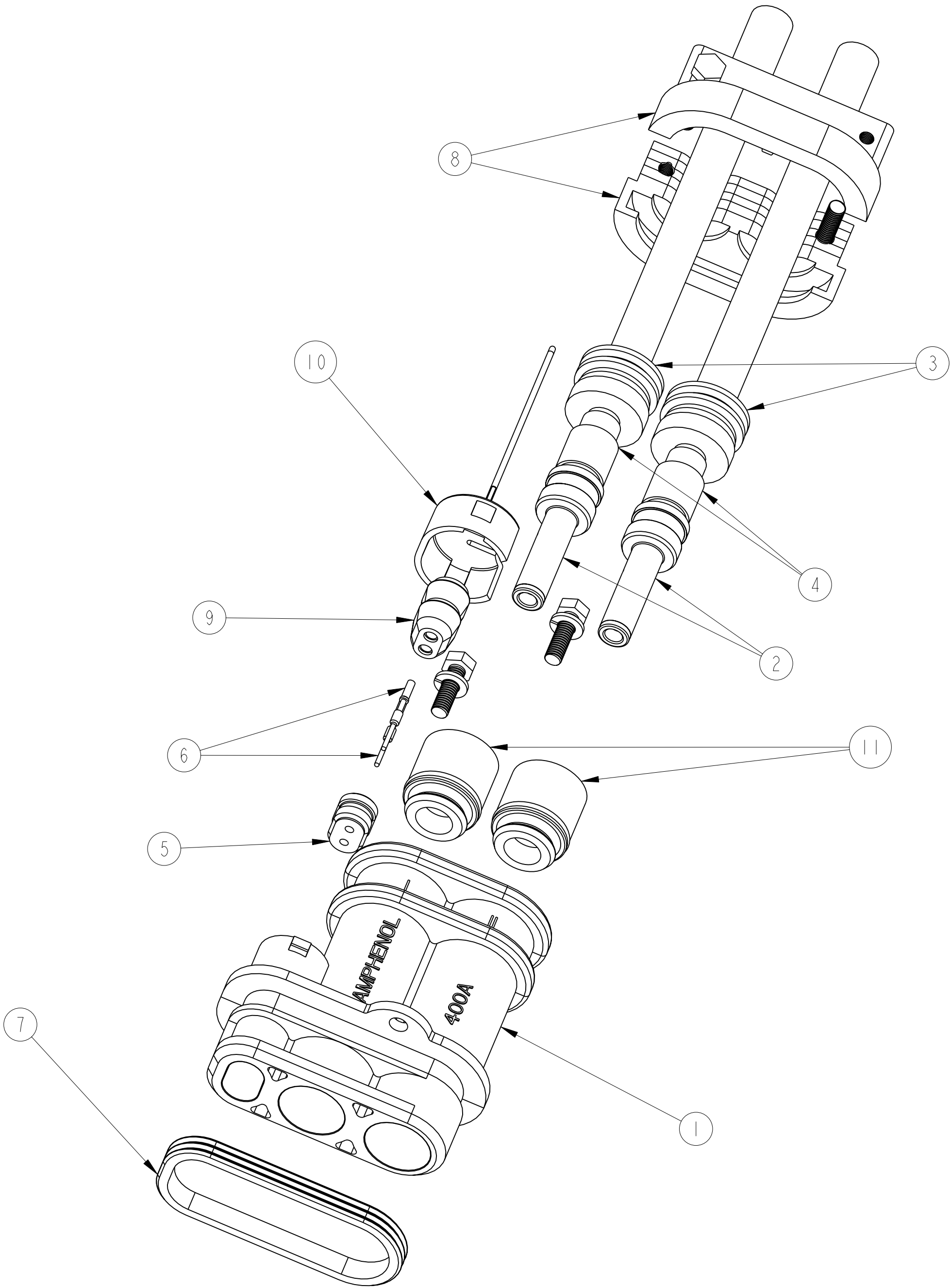
REV. PA4  
SHEET 1 OF 5

4. SUFFIX "-001" DICTATES HEX HEAD SCREW AND "-002" FOR SOCKET CAP SCREW
3. SHRINK TUBE (ITEM #4) TO BE CUT TO (3) 1.00" LENGTHS. TOTAL LENGTH USED PER ASSEMBLY IS 3.00" OR .25FT
2. WIRE TO BE PROVIDED BY CUSTOMER.
1. SEE PAGE 3 FOR PLUG ASSEMBLY OPTIONS AND PART NUMBER VARIATIONS.

NOTES:

THE USE OF THIS DOCUMENT IS UNLIMITED. HOWEVER, DOCUMENTS REFERENCED HEREON MAY CONTAIN LIMITED RIGHTS DATA.

PRO/ENGINEER INFORMATION	
N/A	Pro/e Model Used:
N/A	10-643577.ASSEM
N/A	Drawing Name:
N/A	10-643577
NEXT ASSEMBLY	



THE USE OF THIS DOCUMENT IS UNLIMITED.  
HOWEVER, DOCUMENTS REFERENCED HEREON  
MAY CONTAIN LIMITED RIGHTS DATA.

KEY CODING TABLE					WIRE SIZE CODING TABLE					
KEY CODING	KEY POSITION		ITEM #1 * See Finish Coding		WIRE CODING	WIRE SIZE	ITEM #2	ITEM #3	ITEM #4	ITEM #8 * See Finish Coding
	1	2								
1	NO KEY WAY	NO KEY WAY	10-643574-01(*)		1	50mm <sup>2</sup>	10-643728-001	10-643729-001	10-643675-006	10-643576-10(*)
2	KEY WAY	NO KEY WAY	10-643574-02(*)		2	70mm <sup>2</sup>	10-643728-002	10-643729-002	10-643675-007	10-643576-20(*)
3	NO KEY WAY	KEY WAY	10-643574-03(*)		3	95mm <sup>2</sup>	10-643728-003	10-643728-003	10-643675-008	10-643576-30(*)
4	KEY WAY	KEY WAY	10-643574-04(*)							

CODE LOGIC  
10-643577-( ) ( ) ( )

BASE NUMBER

```

--FINISH CODING:
(1) Electroless Nickel Plate
(FG) Bright Tin Over Electroless Nickel
(B) No Plating

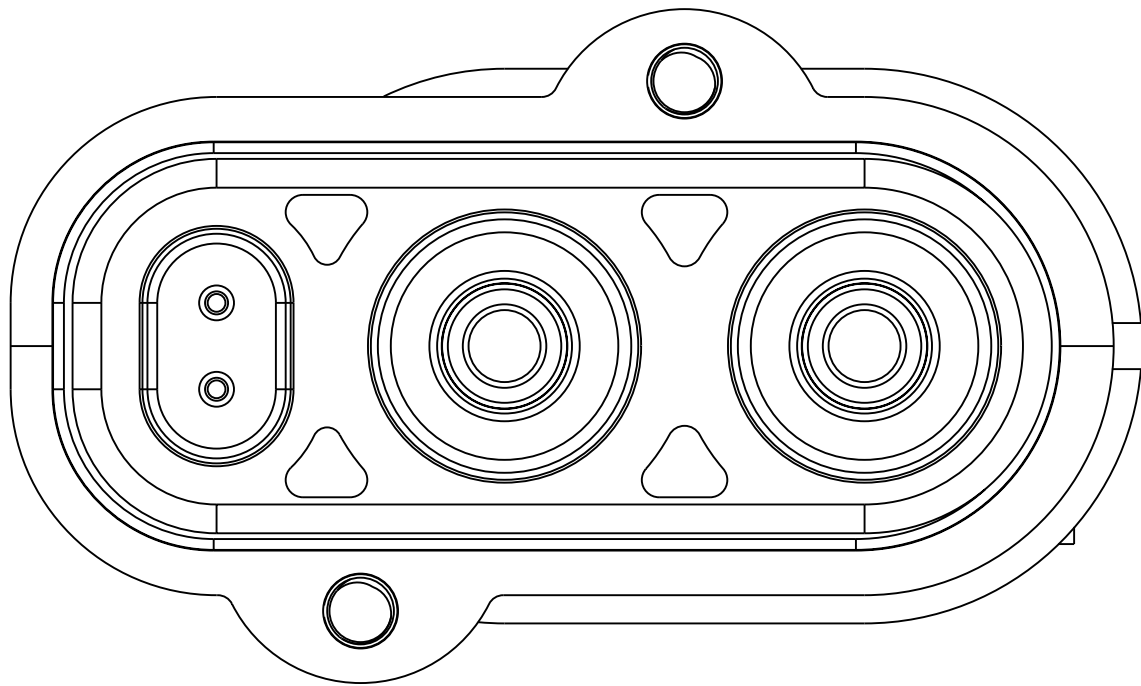
```

—KEY CODING:  
See Table

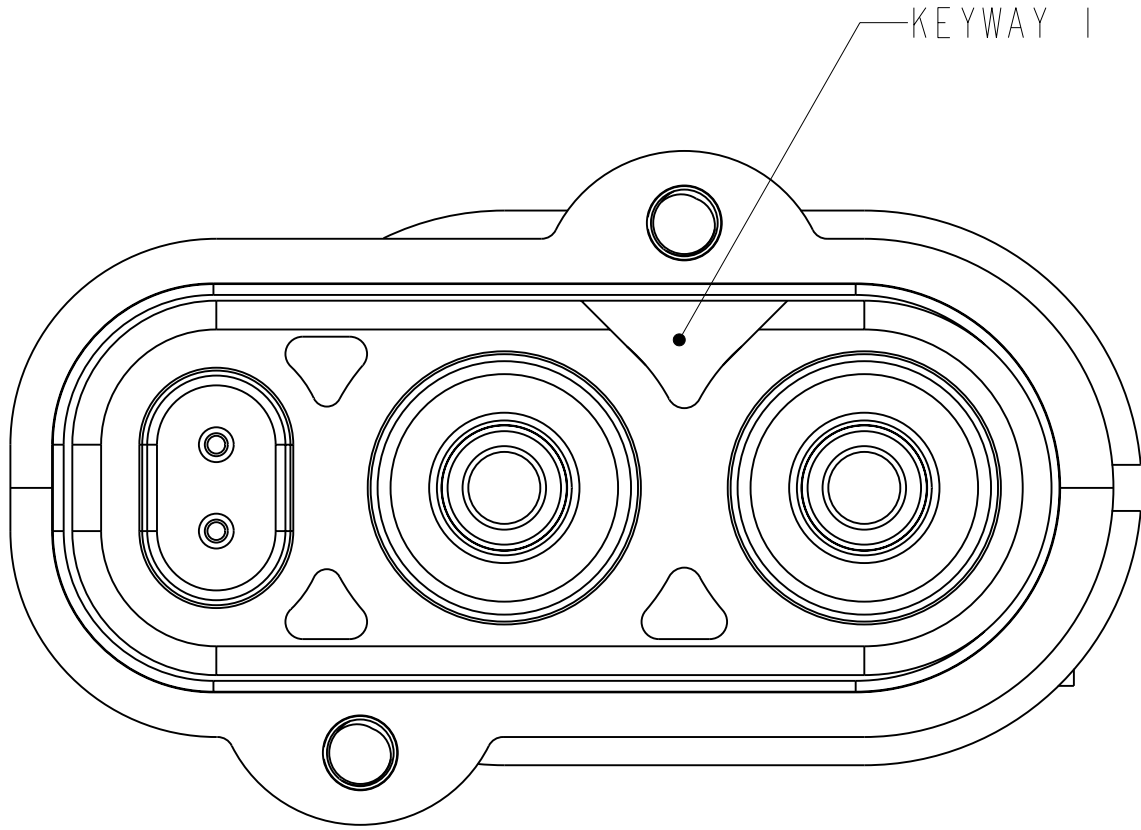
—WIRE SIZE CODING:  
See Table

THE USE OF THIS DOCUMENT IS UNLIMITED.  
HOWEVER, DOCUMENTS REFERENCED HEREON  
MAY CONTAIN LIMITED RIGHTS DATA.

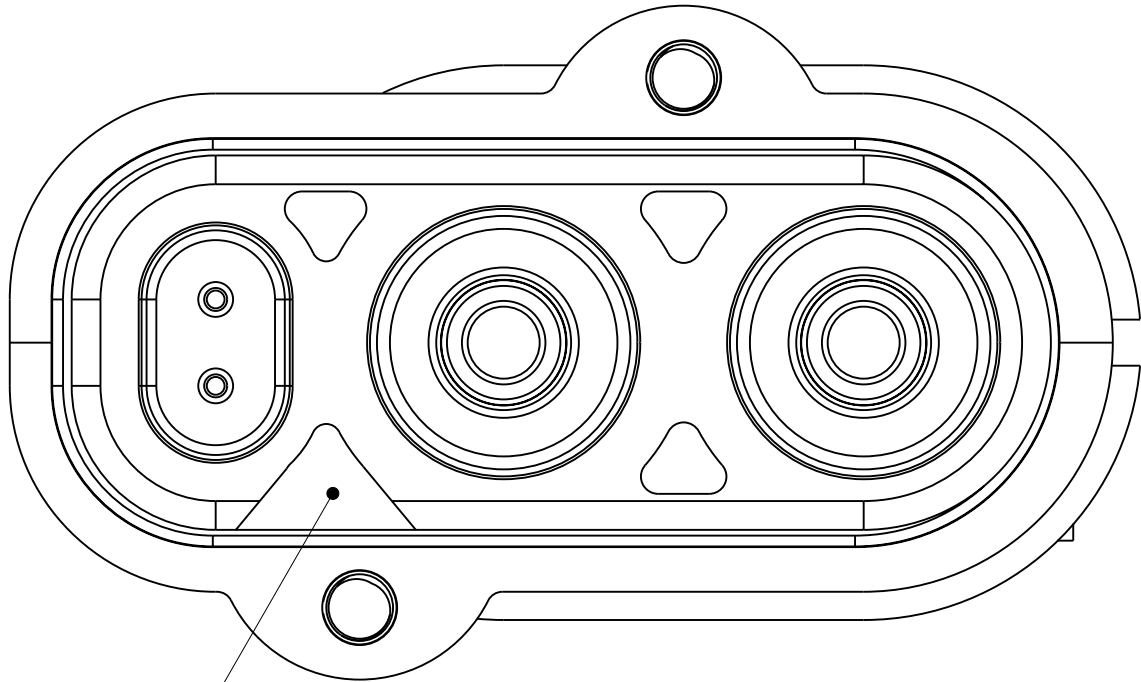
SIZE <b>C</b>	CAGE CODE <b>77820</b>	DOCUMENT NO. <b>10-643577</b>	REV. <b>PA4</b>
SCALE: 2.0		REF. 10-643579	SHEET 3 OF 5



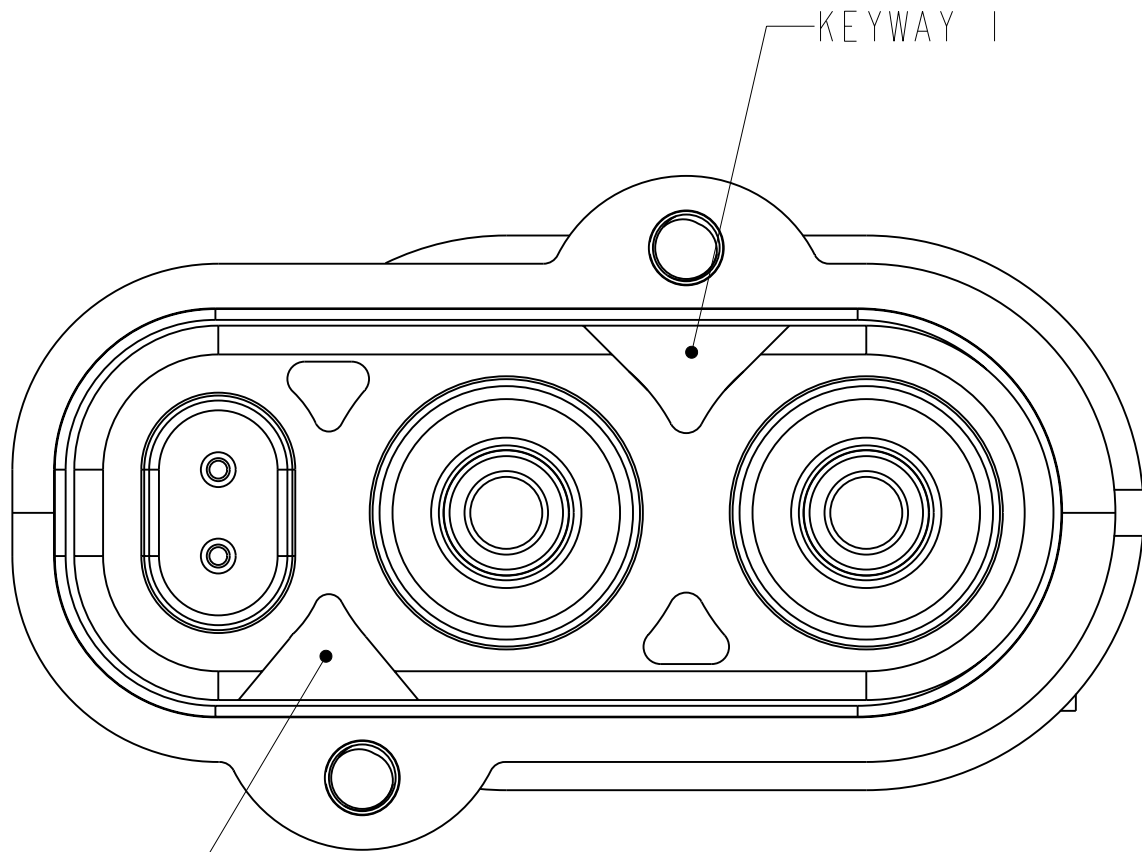
KEY OPTION 1  
NO KEYWAYS OPEN



KEY OPTION 2  
KEYWAY 1 OPEN



KEY OPTION 3  
KEYWAY 2 OPEN



KEY OPTION 4  
BOTH 1 AND 2 KEYWAYS OPEN

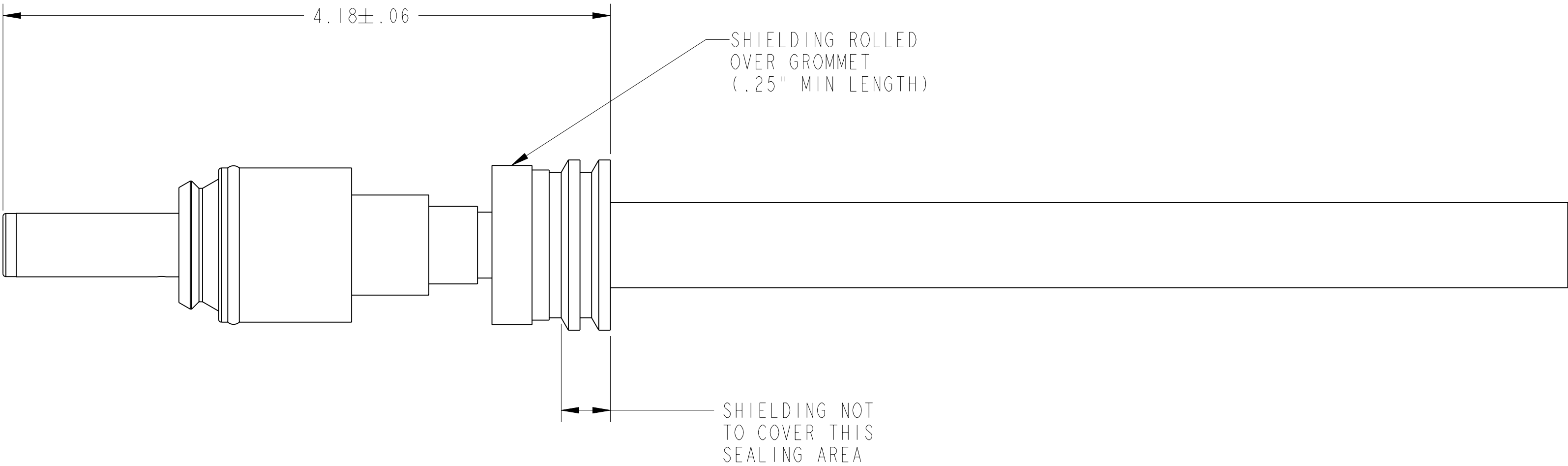
THE USE OF THIS DOCUMENT IS UNLIMITED.  
HOWEVER, DOCUMENTS REFERENCED HEREON  
MAY CONTAIN LIMITED RIGHTS DATA.

2

3

4

\*WIRE/CONTACT ASSEMBLY FOR CUSTOMER REFERENCE\*



.81 ± .06  
STRIP LENGTH  
FOR CONDUCTOR

.75 ± .06  
STRIP LENGTH  
OF SHIELDING

1.31 ± .06  
OUTER JACKET  
STRIP LENGTH

THE USE OF THIS DOCUMENT IS UNLIMITED.  
HOWEVER, DOCUMENTS REFERENCED HEREON  
MAY CONTAIN LIMITED RIGHTS DATA.

3

2

1

A

10-643577

SHEET 5 OF 5

REV.

PA4

C

D

FORMAT: C-ULE-REV. B

C

REV.

PA4

SHEET 5 OF 5

DOCUMENT NO.

10-643577

# Mouser Electronics

Authorized Distributor

Click to View Pricing, Inventory, Delivery & Lifecycle Information:

[Amphenol:](#)

[EP427011](#)