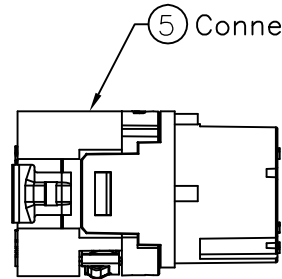
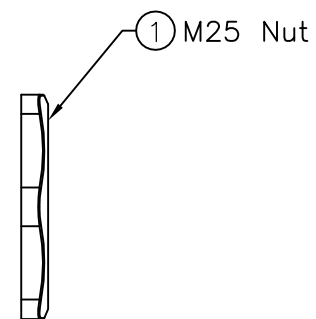
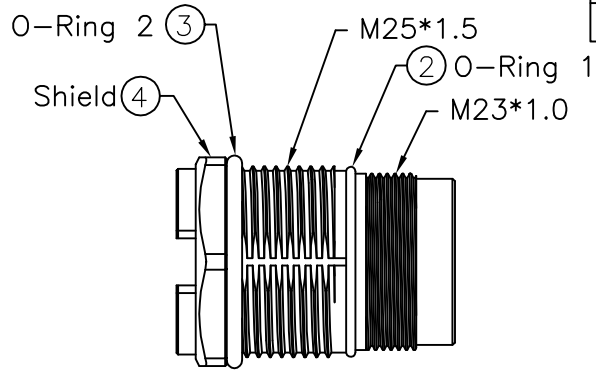


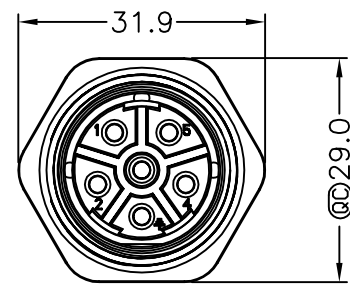
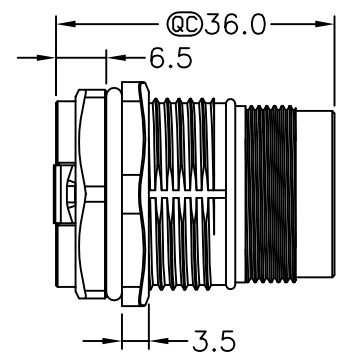
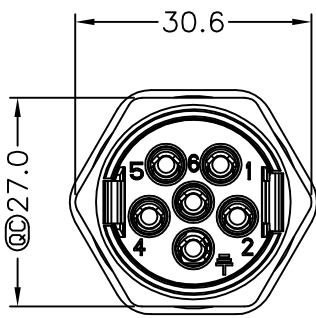
F
E
D
C
B
A



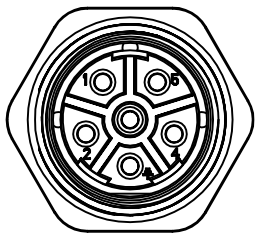
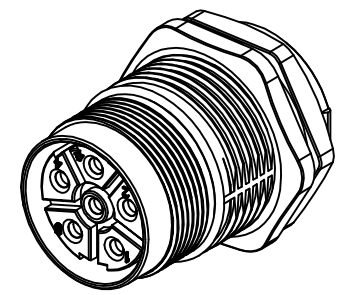
⑤ Connector



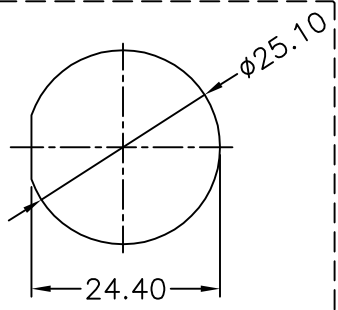
① M25 Nut



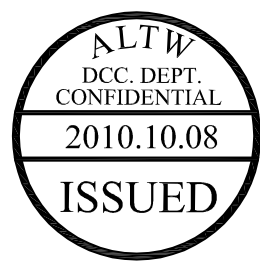
Conn.



Conn.
Pin Assignments
Front View



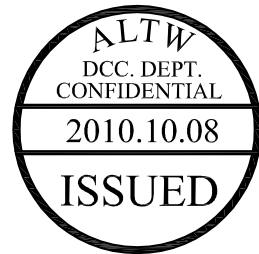
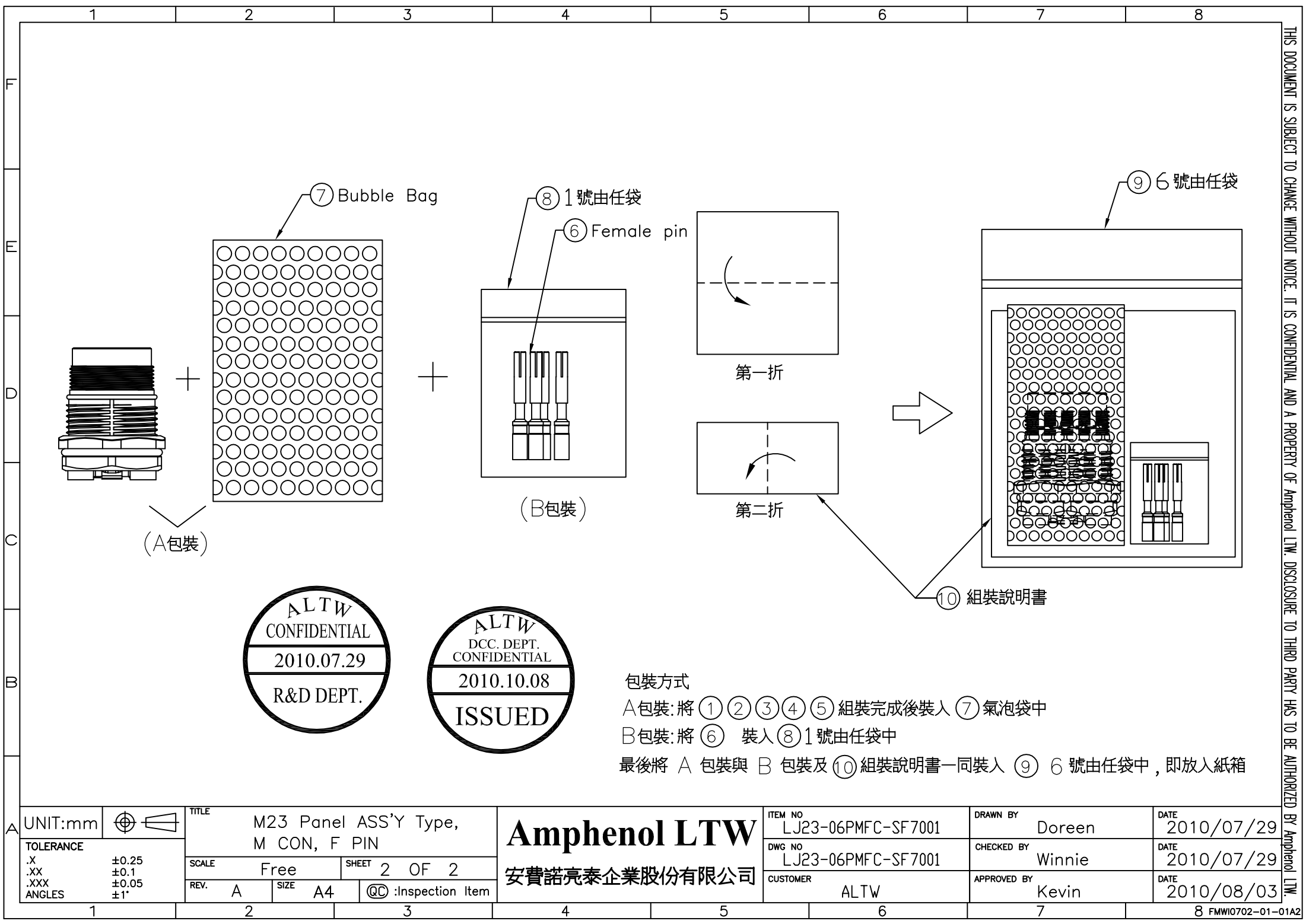
Recommended
Panel Cut-Out



- Note:
- * @@ Important Dimension.
 - * Waterproof Rate: IP67.
 - * Connector: Nylon, Black.
 - * Female Pin: Copper Alloy, Gold Plated.
 - * Shield: Copper Alloy, Nickel Plated.
 - * O-Ring: Silicone, UL94V-0, Gray.
 - * Recommended Gauge: 14 Awg, 12 Awg.
 - * Use without waterproof cap or dust cap
 - Panel Thickness Max: 6.0mm.

| | | | | | | | | |
|---|---|--|---------------------|---------------|------------------|-------------------------------|----------------------|--------------------|
| UNIT:mm | | TITLE M23 Panel ASS'Y Type, M CON, F PIN | | Amphenol LTW | | ITEM NO LJ23-06PMFC-SF7001 | DRAWN BY Doreen | DATE 2010/07/29 |
| TOLERANCE .X ±0.25 .XX ±0.1 .XXX ±0.05 ANGLES ±1° | | SCALE Free | SHEET 1 OF 2 | 安費諾亮泰企業股份有限公司 | | DWG NO LJ23-06PMFC-SF7001 | CHECKED BY Winnie | DATE 2010/07/29 |
| REV. A | | SIZE A4 | QC :Inspection Item | | CUSTOMER ALTW | | APPROVED BY Kevin | DATE 2010/08/03 |
| 1 | 2 | 3 | 4 | 5 | 6 | 7 | 8 FMWIO702-01-01A2 | |

THIS DOCUMENT IS SUBJECT TO CHANGE WITHOUT NOTICE. IT IS CONFIDENTIAL AND A PROPERTY OF Amphenol LTW. DISCLOSURE TO THIRD PARTY HAS TO BE AUTHORIZED BY Amphenol LTW.



包裝方式
A包裝: 將 ① ② ③ ④ ⑤ 組裝完成後裝入 ⑦ 氣泡袋中
B包裝: 將 ⑥ 裝入 ⑧ 1 號由任袋中
最後將 A 包裝與 B 包裝及 ⑩ 組裝說明書一同裝入 ⑨ 6 號由任袋中, 即放入紙箱

| | | | | | | | | | | | | | | | | |
|---|---|--|---|--|---------------------|-----------------|-------------------------------|--|----------------------|--------------------------------|--------------------|----------------------|---|--------------------|--------------------|--|
| A | UNIT:mm | |  | TITLE M23 Panel ASS'Y Type, M CON, F PIN | | | Amphenol LTW 安費諾亮泰企業股份有限公司 | | | ITEM NO LJ23-06PMFC-SF 7001 | | DRAWN BY Doreen | | DATE 2010/07/29 | | |
| | TOLERANCE .X ±0.25 .XX ±0.1 .XXX ±0.05 ANGLES ±1° | | | SCALE Free | | SHEET 2 OF 2 | | | | DWG NO LJ23-06PMFC-SF 7001 | | CHECKED BY Winnie | | DATE 2010/07/29 | | |
| | REV. A | | SIZE A4 | | QC :Inspection Item | | CUSTOMER ALTW | | APPROVED BY Kevin | | DATE 2010/08/03 | | | | | |
| | 1 | | 2 | | 3 | | 4 | | 5 | | 6 | | 7 | | 8 FWWI0702-01-01A2 | |
| | | | | | | | | | | | | | | | | |

Mouser Electronics

Authorized Distributor

Click to View Pricing, Inventory, Delivery & Lifecycle Information:

[Amphenol:](#)

[LJ23-06PMFC-SF7001](#)