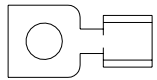


FOR REFERENCE ONLY

A

NX201CB6B-61



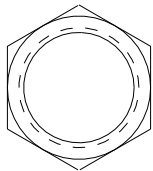
SW-200-23
TERMINAL
(2)



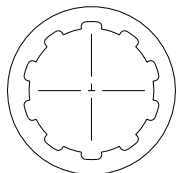
SW-200-25
#2 LOCKWASHER
(2)



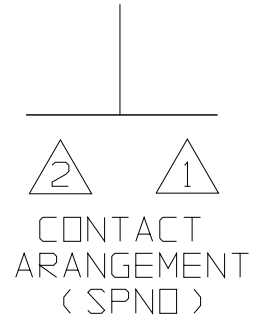
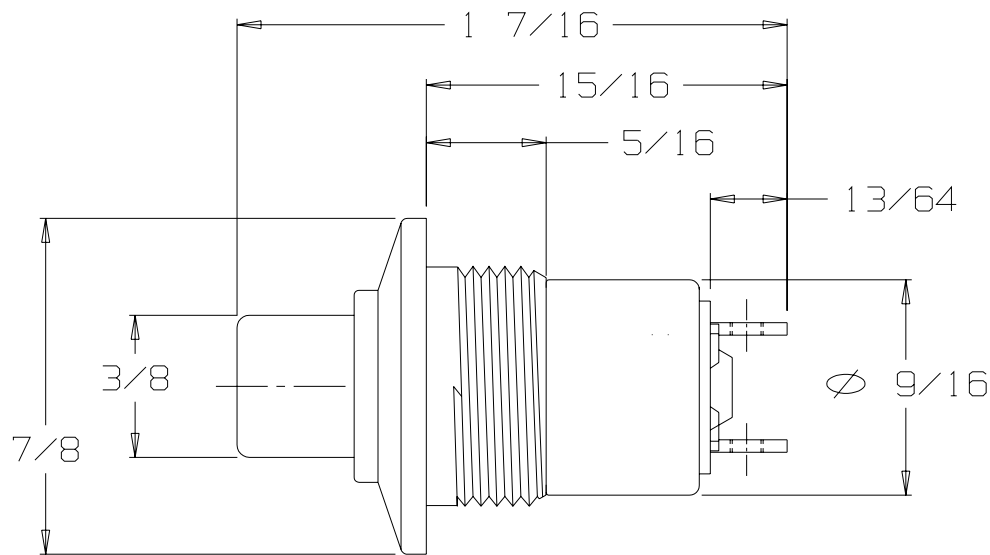
SW-200-72
#2-56 SCREW
(2)



SW-200-34
5/8-24 NUT
(1)



SW-200-35
5/8 LOCKWASHER
(1)



STANDARD MOMENTARY SWITCH
SPNO - SINGLE POLE NORMALLY OPEN
ADAPTER TYPE "C", COLOR BLACK
BUTTON #6, COLOR BLACK
HARDWARE INCLUDED

THIS DOCUMENT CONTAINS PROPRIETARY INFORMATION OF NEXUS, INCORPORATED AND SUCH INFORMATION MAY NOT BE DISCLOSED TO OTHERS FOR ANY PURPOSE OR USED FOR ANY PURPOSE WITHOUT THE WRITTEN CONSENT OF NEXUS.

OWN. BY EWT	DATE 2/18/05	MATERIAL N/A		
CHECKED BY	DATE	FINISH N/A		
APPR. BY	DATE	WEIGHT ————	SCALE 2 : 1	NEXUS STAMFORD, CONN
UNLESS OTHERWISE SPECIFIED DIMENSIONS ARE IN INCHES TOLERANCES ON .XX .XXX ANGLES ———— ± .003 ± .5°		TITLE SWITCH MOMENTARY		
		DO NOT SCALE DWG.	SHEET 1 OF 1	
		SIZE A		DWG. NO. NX201CB6B-61

UNLESS OTHERWISE SPECIFIED
DIMENSIONS ARE IN INCHES
TOLERANCES ON
.XX .XXX ANGLES
±.003 ±.5°

SIZE
A

NEXUS
STAMFORD, CONN

DWG. NO.
NX201CB6B-61

Mouser Electronics

Authorized Distributor

Click to View Pricing, Inventory, Delivery & Lifecycle Information:

[Amphenol:](#)

[NX201CB6W-61](#)