

FOR REFERENCE ONLY

#### SPECIFICATIONS:

AC RATING: 10 AMPS @115VAC (RESISTIVE LOAD)  
5 AMPS @115VAC (INDUCTIVE LOAD)  
3 AMPS @115VAC (LAMP LOAD)

DC RATING: 10 AMPS @28VDC (RESISTIVE LOAD)  
5 AMPS @28VDC (INDUCTIVE LOAD)  
3 AMPS @28VDC (LAMP LOAD)

#### TYPE 7 CONTACT ARRANGEMENTS:

1/2 AMPERAGE LOADS SHOWN ABOVE

MECHANICAL LIFE: 500,000 CYCLES

ACTION: MOMENTARY SNAP OR PUSH PULL

OPERATING FORCE:

SERIES 20 & 30: 3 TO 5 POUNDS MOMENTARY

1/2 TO 2 POUNDS PUSH-PULL

SERIES 22 & 32: 2 TO 3 POUNDS MOMENTARY

WEIGHT: .050 POUNDS MAXIMUM

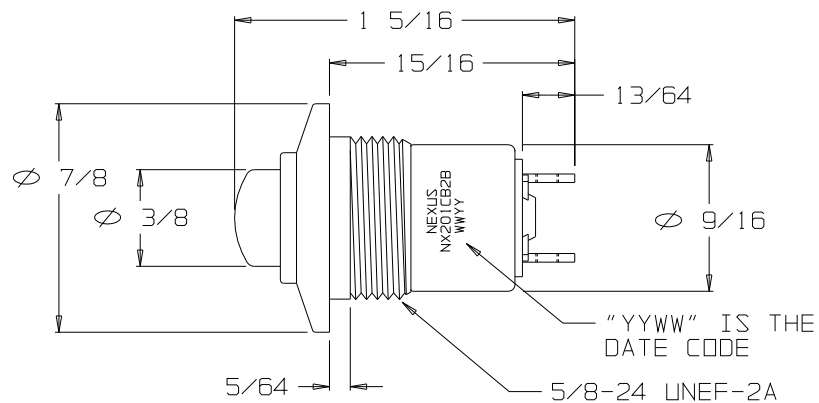
CASE: ALUMINUM ALLOY 2011-T3,  
CLEAR ANODIZED IAW MIL-A-8625

PLUNGER: GLASS FILLED NYLON

BODY: DIALYL PHTHALATE IAW MIL-M-14

TERMINALS: THREADED #2-56 NC-2B

B NX201CB2B-XX



CONTACT  
ARRANGEMENT  
(SPNO)

#### DESCRIPTION

"SERIES 20" MOMENTARY SWITCH  
CONTACTS SPNO - SINGLE POLE NORMALLY OPEN  
ADAPTER TYPE "C", COLOR BLACK  
BUTTON #2, COLOR BLACK

#### ORDERING INFORMATION:

|                |   |
|----------------|---|
| NX201CB2B-00   | SWITCH ONLY   |
| NX201CB2B-60   | SWITCH, MOUNTING HARDWARE                           |
| NX201CB2B-61   | SWITCH, MOUNTING HARDWARE, TERNIMAL HARDWARE        |
| NX201CB2B-00EU | SWITCH ONLY (ROHS)                                  |
| NX201CB2B-60EU | SWITCH, MOUNTING HARDWARE (ROHS)                    |
| NX201CB2B-61EU | SWITCH, MOUNTING HARDWARE, TERNIMAL HARDWARE (ROHS) |

THIS DOCUMENT CONTAINS PROPRIETARY INFORMATION OF NEXUS, INCORPORATED AND SUCH INFORMATION MAY NOT BE DISCLOSED TO OTHERS FOR ANY PURPOSE OR USED FOR ANY PURPOSE WITHOUT THE WRITTEN CONSENT OF NEXUS.

|   |     |      |          |          |                          |
|---|-----|------|----------|----------|--------------------------|
| DWN. BY   | EWT | DATE | 06/05/08 | MATERIAL | N/A                      |
| CHECKED BY  |     | DATE |          | FINISH   | N/A                      |
| APPR. BY  |     | DATE |          | WEIGHT   | —                        |
| UNLESS OTHERWISE SPECIFIED<br>DIMENSIONS ARE IN INCHES<br>TOLERANCES ON |     |      |          | SCALE    | N/A                      |
|   |     |      |          | TITLE    | SWITCH SPNO<br>MOMENTARY |
| .XX .XXX ANGLES   |     |      |          | SIZE     | B                        |
| — ±.003 ±.5°  |     |      |          | DWG. NO. | NX201CB2B-XX             |
| DO NOT SCALE DWG.   |     |      |          | SHEET    | 1 OF 1                   |

|      |          |      |      |      |
|------|----------|------|------|------|
| LET. | REVISION | CN # | DATE | CHK. |
|------|----------|------|------|------|



SW-200-23  
TERMINAL  
(2)

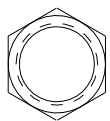


SW-200-25  
#2 LOCKWASHER  
(2)

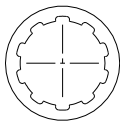


SW-200-72  
#2-56 SCREW  
(2)

TERMINAL  
HARDWARE



SW-200-34  
5/8-24 NUT  
(1)



SW-200-35  
5/8 LOCKWASHER  
(1)

MOUNTING  
HARDWARE

# Mouser Electronics

Authorized Distributor

Click to View Pricing, Inventory, Delivery & Lifecycle Information:

[Amphenol:](#)

[NX201CB2R](#)