

Box Headers, With Lock & Eject PCB Mount, 2.54mm Pitch

Product Specification:

Materials and Finish

Insulator: Glass-reinforced thermoplastic (P.B.T), UL-94V-0 rated

Contact: Phosphor bronze per QQ-B-750, plated full flash gold or selected gold in mating area; 100μ" min. tin-lead on termination area, with entire contact under-plated 50μ" min. nickel

Electrical

Contact Resistance: 20 milliohms max. at 1 ampere DC

Insulation Resistance: 1000 megohms at 500 VDC

Dielectric Withstanding Voltage: 500 VAC/rms 60Hz for one minute

Current Rating: 1 ampere per contact

Voltage Rating: 250 VAC/rms 60Hz

Mechanical

Contact Retention: 2.0 kgs minimum per contact

Latch Retention: 8.0 kgs minimum

Durability: See page 9

Related Product Data

PC Board Layout:

Straight PCB mount: See page 87

Right angle PCB mount: See page 88

Ordering Information:

G816 XX XX X XX X X

Box Headers 2.54mm Pitch, with L&E

Number of Positions

- 10: 10 positions
- 14: 14 positions
- 16: 16 positions
- 20: 20 positions
- 26: 26 positions
- 30: 30 positions
- 34: 34 positions
- 40: 40 positions
- 50: 50 positions
- 60: 60 positions
- 64: 64 positions

Contact Characteristics

- 30: Straight solder PC tail(2.84mm)
- 31: Straight solder PC tail(3.94mm)
- 32: R/A solder PC tail(2.54mm)
- 33: R/A solder PC tail(4.06mm)
- 34: Straight solder PC tail(3.5mm)
- 35: R/A solder PC tail(3.5mm)
- 37: Straight wire wrap tail
- 39: R/A wire wrap tail
- 40: Straight solder PC tail(2.67mm)
- 41: R/A solder PC tail(2.67mm)

Lock & Eject (L&E) and Mounting Stud Options

- 0: No L&E, no stud
- 1: Short L&E, no stud
- 2: Short L&E, short stud
- 3: Short L&E, long stud
- 4: Long L&E, no stud
- 5: Long L&E, short stud
- 6: Long L&E, long stud

Contact Finish

- AA: Flash gold
- 01: Full flash gold
- 19: 15μ" gold
- 35: 30μ" gold
- 57: 50μ" gold

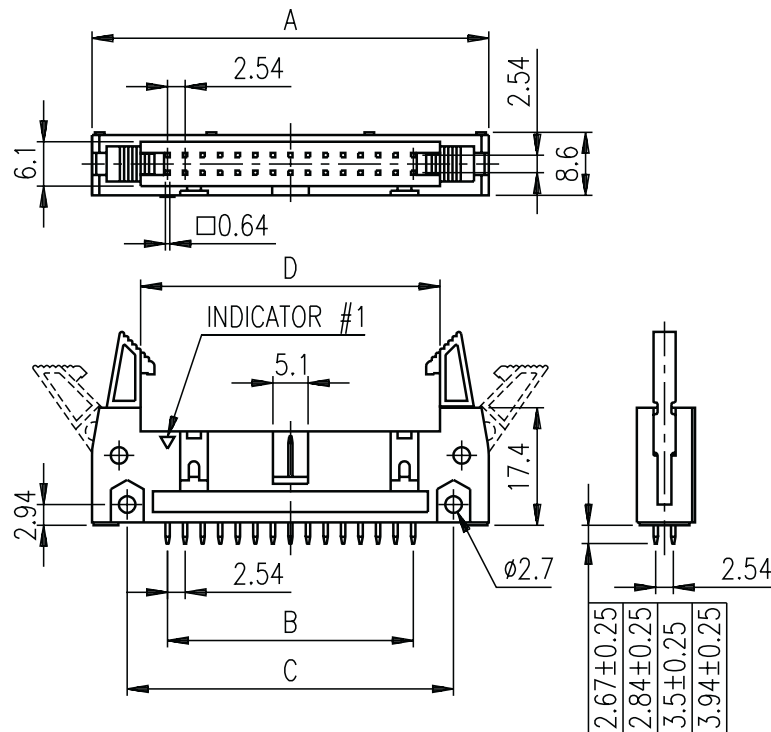
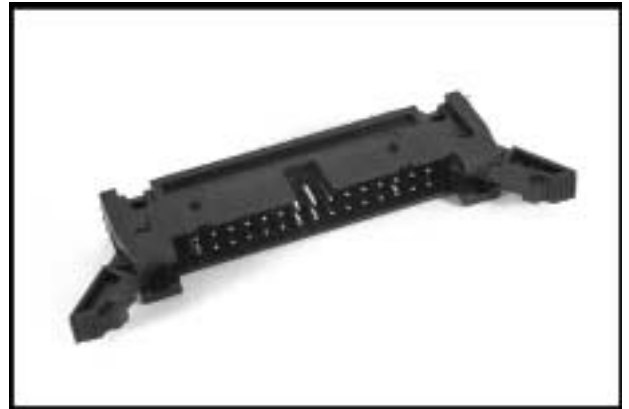
Color of Insulator

- B: Black
- G: Gray

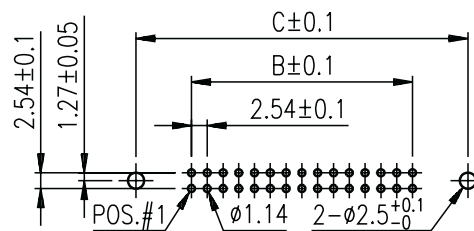
Variation Code

- Blank: Standard

Box Headers, With Lock & Eject
Straight PCB Mount, 2.54mm pitch

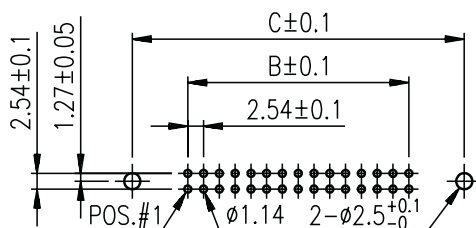
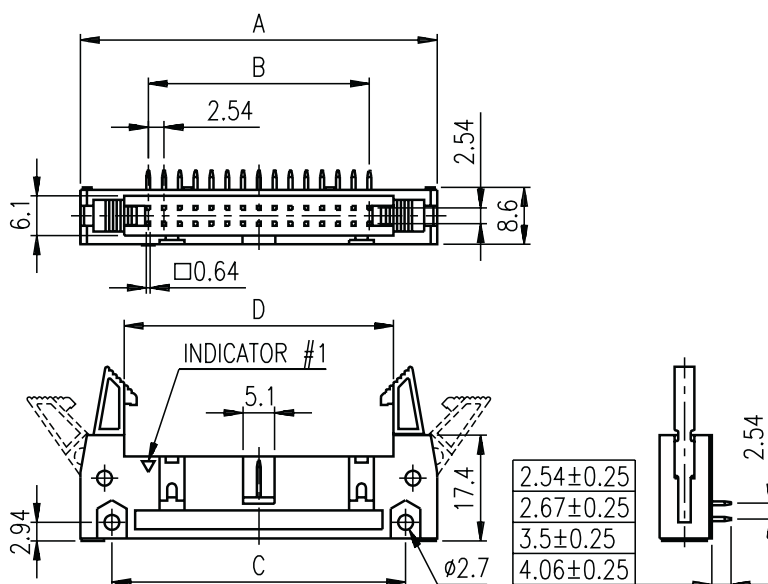


Straight PCB Mount



Recommended PCB Layout

Box Headers, With Lock & Eject
Right Angle PCB Mount, 2.54mm Pitch



Recommended PCB Layout

Dimension Table
Box Headers, PCB Mount, 2.54mm pitch

| No. Of Positions | Dimensions (mm) | | | |
|------------------|-----------------|-------|-------|-------|
| | A | B | C | D |
| 10 | 31.88 | 10.16 | 21.84 | 17.96 |
| 14 | 37.02 | 15.24 | 26.92 | 23.04 |
| 16 | 39.52 | 17.78 | 29.46 | 25.58 |
| 20 | 44.74 | 22.86 | 34.54 | 30.66 |
| 26 | 52.20 | 30.48 | 42.16 | 38.28 |
| 30 | 57.40 | 35.56 | 47.24 | 43.36 |
| 34 | 62.40 | 40.64 | 52.32 | 48.44 |
| 40 | 70.04 | 48.26 | 59.94 | 56.60 |
| 50 | 82.72 | 60.96 | 72.64 | 68.76 |
| 60 | 95.40 | 73.66 | 85.34 | 81.46 |
| 64 | 100.5 | 78.74 | 90.42 | 86.54 |

Mouser Electronics

Authorized Distributor

Click to View Pricing, Inventory, Delivery & Lifecycle Information:

[Amphenol:](#)

[G81614331AABEU](#) [G81620331AABEU](#) [G81610331AABEU](#) [G81610431AABHR](#) [G81616331AABEU](#)
[G81626331AABEU](#) [G81634434AABHR](#) [G81664431AABHR](#)