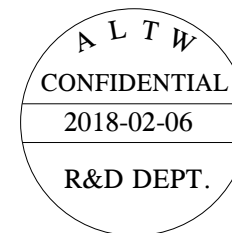
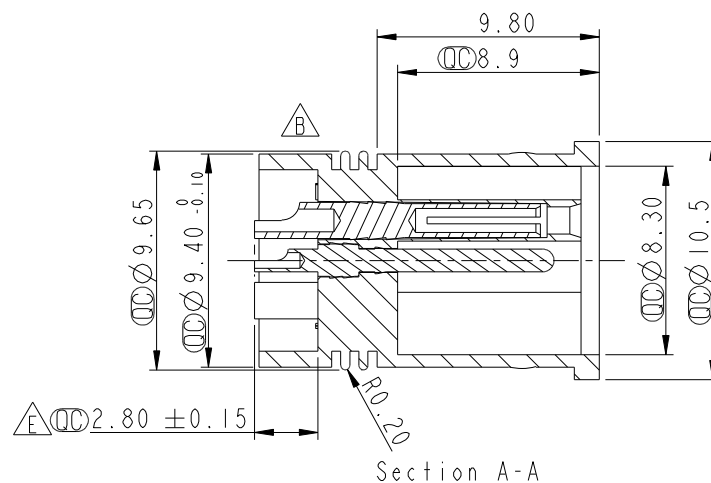
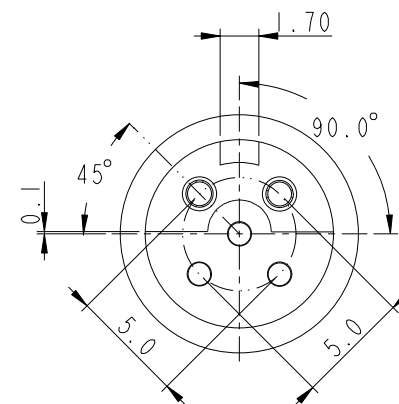
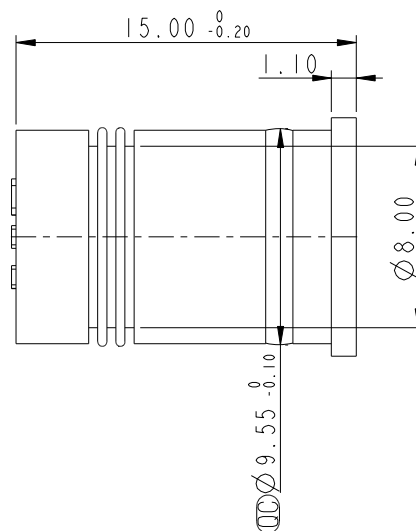


Pin Assignments  
Front View

REV.	ECN NO.	DATE	SIGN	DESCRIPTION
C	LEN1670222	2016/07/14	Jinhai	Change Dimension
D	LEN1681091	2016/08/14	Mafei	Updated The Dimension.
E	LEN1810202	2018/02/06	Zhangling Wan	Updated The Dimension.



Note:  
\*  $\varnothing$  Important Dimension.  
\* Housing: Nylon+GF, Black  
\* Female Pin: Copple Alloy, Gold Plated  
\* Male Pin: Copple Alloy, Gold Plated

UNIT:mm		TITLE Solder M12 I Style 5Pin		ITEM NO SLD-1005001		DRAWN BY Zhangling Wan		DATE 2018-02-06	
TOLERANCE .X ±0.25 .XX ±0.1 .XXX ±0.05 ANGLES ±1°		SCALE 3:1	SIZE A4	SHEET 1 OF 1	DWG NO SLD-1005001	CHECKED BY Fisher Wang		DATE 2018-02-06	
REV. E		WC-REV. A.4	$\varnothing$ Inspection item		CUSTOMER ALTW	APPROVED BY Kevin Hu		DATE 2018-02-06	

Amphenol LTW  
安費諾亮泰企業股份有限公司

# Mouser Electronics

Authorized Distributor

Click to View Pricing, Inventory, Delivery & Lifecycle Information:

[Amphenol:](#)

[SLD-I005001](#)