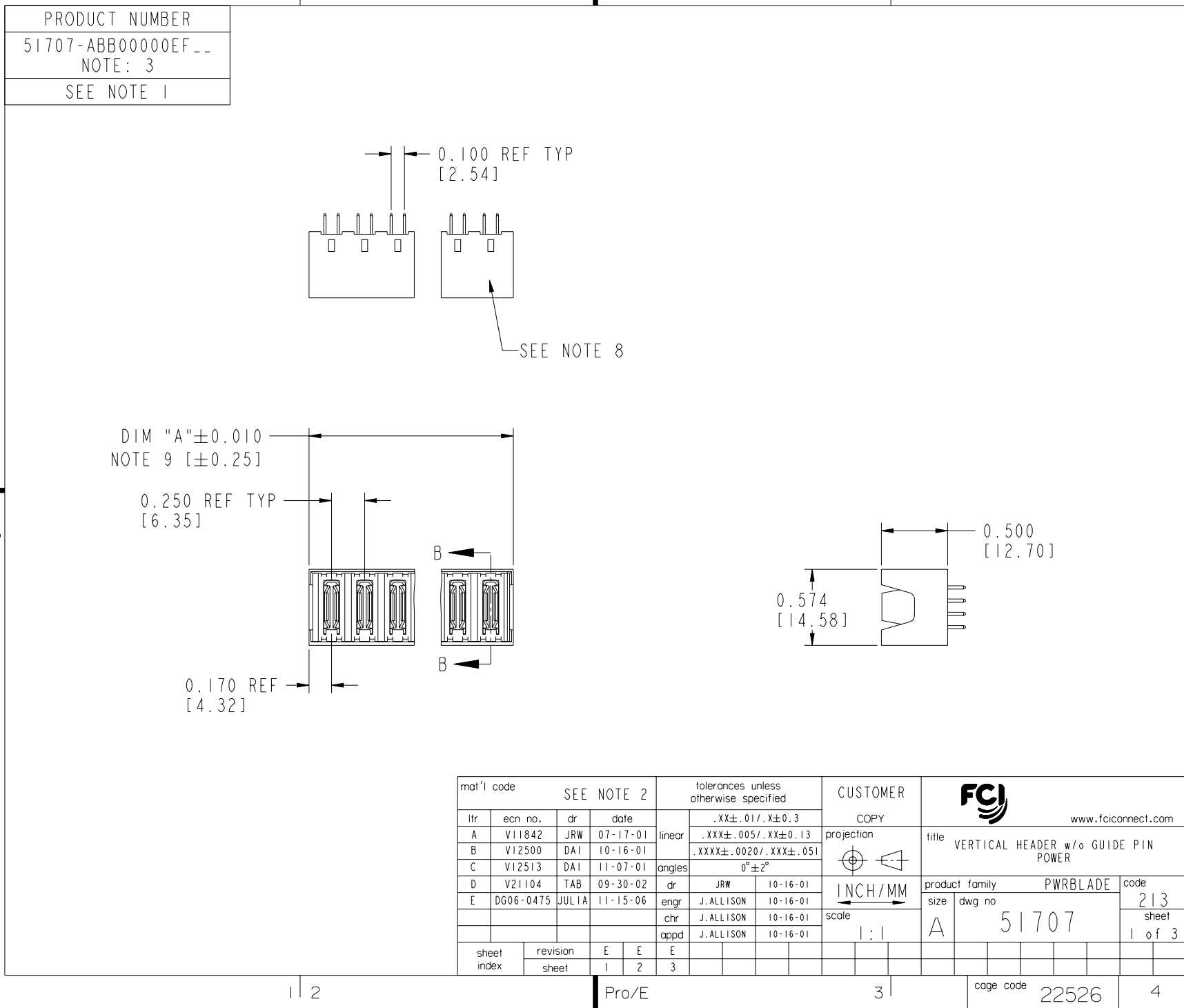




All rights strictly reserved. Reproduction or issue to third parties in any form whatever is not permitted without written authority from the proprietor. Property of FCI. Copyright FCI.

Tous droits strictement reserves. Reproduction ou communication a des tiers interdite sous quelque forme que ce soit sans autorisation ecrite du proprietaire. Propriete de c FCI. Droits de reproduction FCI.



Pro/E

3

cage code 22526

4

PDM: Rev:E

STATUS: Released

Printed: Dec 20, 2010



PRODUCT NUMBER	DIM	LENGTH FORMULAS (SEE NOTE 9)
51707-ABB00000EF__ NOTE: 3	DIM "A"	.250 [6.35] x BB + .090 [2.29] (NOTE 9)
SEE NOTE 1	DIM "F"	.250 [6.35] x BB + .120 [3.05]

CONNECTOR NOTES:

- ①. PRODUCT NUMBER CODE:
51707 - A BB 000 00 E F LF
- NO THIS SUFFIX: 100u"/2.54um SnPb ON PCB INTERACE
ADD THIS SUFFIX: 78u"/2.00um Sn OR 5u" Au ON PCB INTERFACE
ALWAYS "0" (ZERO) (NOTE 7)
TAIL OPTIONS (NOTE 6)
ALWAYS '00' (ZERO,ZERO)
ALWAYS '000' (ZERO,ZERO,ZERO) (NOTE 5)
NUMBER OF POWER CONTACTS (NOTE 4)
PLATING (NOTE 3)
BASE NUMBER

- ②. HOUSING MATERIAL: UL94 V-0 HIGH GLASS FILLED TEMP THERMO PLASTIC
POWER CONTACT MATERIAL: COPPER ALLOY
- ③. 51707-1BB00000EF;51707-1BB00000EFLF;51707-3BB00000EFLF PLATING SPEC.
SEE PRINT:10064183

- ④. POWER CONTACTS, 01 TO 20 AVAILABLE.
MAXIMUM OF 20 POWER CONTACTS PER CONNECTOR
- ⑤. THIS PART IS NOT AVAILABLE WITH SIGNAL CONTACTS.

- ⑥. TAIL OPTIONS:
A = 0.135 +0.015/-0.010 [3.43 +0.38/-0.25] SOLDER TO BOARD
B = 0.165 +0.015/-0.010 [4.19 +0.38/-0.25] SOLDER TO BOARD
C = 0.165 +0.015/-0.010 [4.19 +0.38/-0.25] PRESS FIT

- ⑦. BOARD RETENTION NOT AVAILABLE WITH GUIDELESS ENDS.

- ⑧. MANUFACTURE'S NAME, P/N, AND DATE CODE
TO APPEAR ON THIS SURFACE.

- ⑨. THE MAXIMUM OVERALL LENGTH (DIM A) OF A PART
IS 8.00 [203.2]

10. PRODUCT SPECIFICATION GS-12-149

11. SEE PWRBLADE VERTICAL HEADER SPECIAL
WORKSHEET (51696) FOR MATING LENGTH OPTIONS.

12. DIMENSIONS AND TOLERANCES ARE IN ACCORDANCE
WITH ASME Y14.5M, 1994 UNLESS OTHERWISE

PCB NOTES:




13. ALL DIMENSIONS ARE BASIC UNLESS OTHERWISE SPECIFIED.

14. ALL THROUGH HOLES ARE LOCATED WITH A
TRUE POSITION OF 0.004 [0.10]

15. ALL HOLE DIAMETERS ARE FINISHED HOLE SIZE.

16. $\varnothing 0.0453 \pm 0.0010$ [1.151 ± 0.025] DRILLED HOLES PLATED WITH
0.0003 [0.008] MIN SnPb OVER 0.001 [0.03] TO 0.003 [0.08] Cu
PLATING TO ACHIEVE A $\varnothing 0.040 \pm 0.003$ [1.02 ± 0.07] HOLE.

17. FOR PRESS FIT APPLICATION USE FCI CAM
TOOL 430169-XXX.

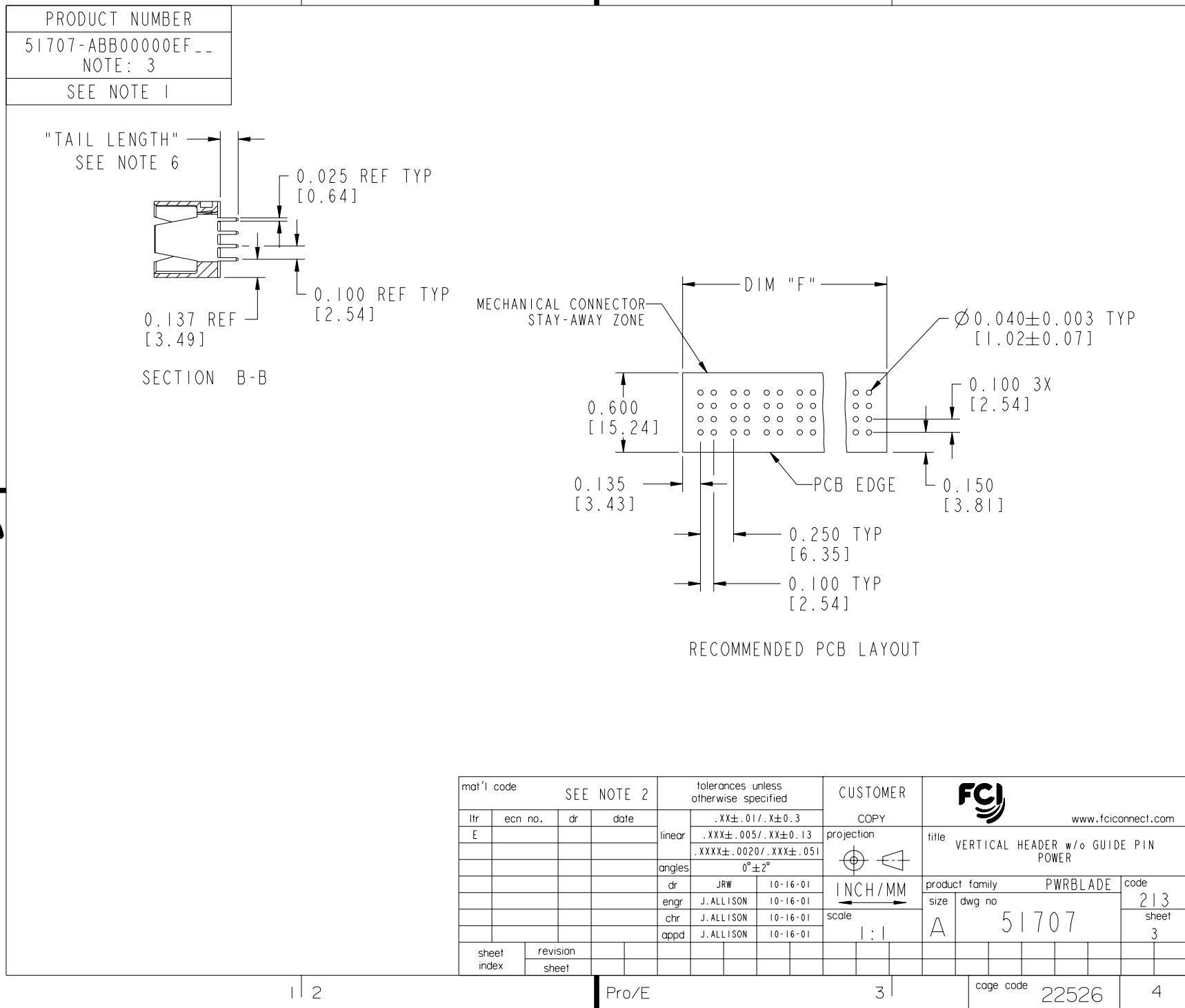
mat'l code				SEE NOTE 2		tolerances unless otherwise specified		CUSTOMER		 www.fciconnect.com			
ltr	ecn no.	dr	date	linear	.XX±.01/.X±0.3		projection 	title VERTICAL HEADER w/o GUIDE PIN POWER					
E					.XXX±.005/.XX±0.13								
					.XXX±.0020/.XXX±.051								
				angles	0°±2°		INCH/MM 	product family		PWRBLADE		code	
				dr	JRW	10-16-01		scale 3:2	size	dwg no	51707		213 sheet 2
				enrg	J. ALLISON	10-16-01							
				chr	J. ALLISON	10-16-01							
				appd	J. ALLISON	10-16-01							
sheet index		revision sheet											

Pro/E

3

cage code 22526

4



Mouser Electronics

Authorized Distributor

Click to View Pricing, Inventory, Delivery & Lifecycle Information:

[FCI / Amphenol:](#)

[51707-10200000C0LF](#) [51707-10900000C0LF](#) [51707-10600000A0LF](#) [51707-10300000A0LF](#)