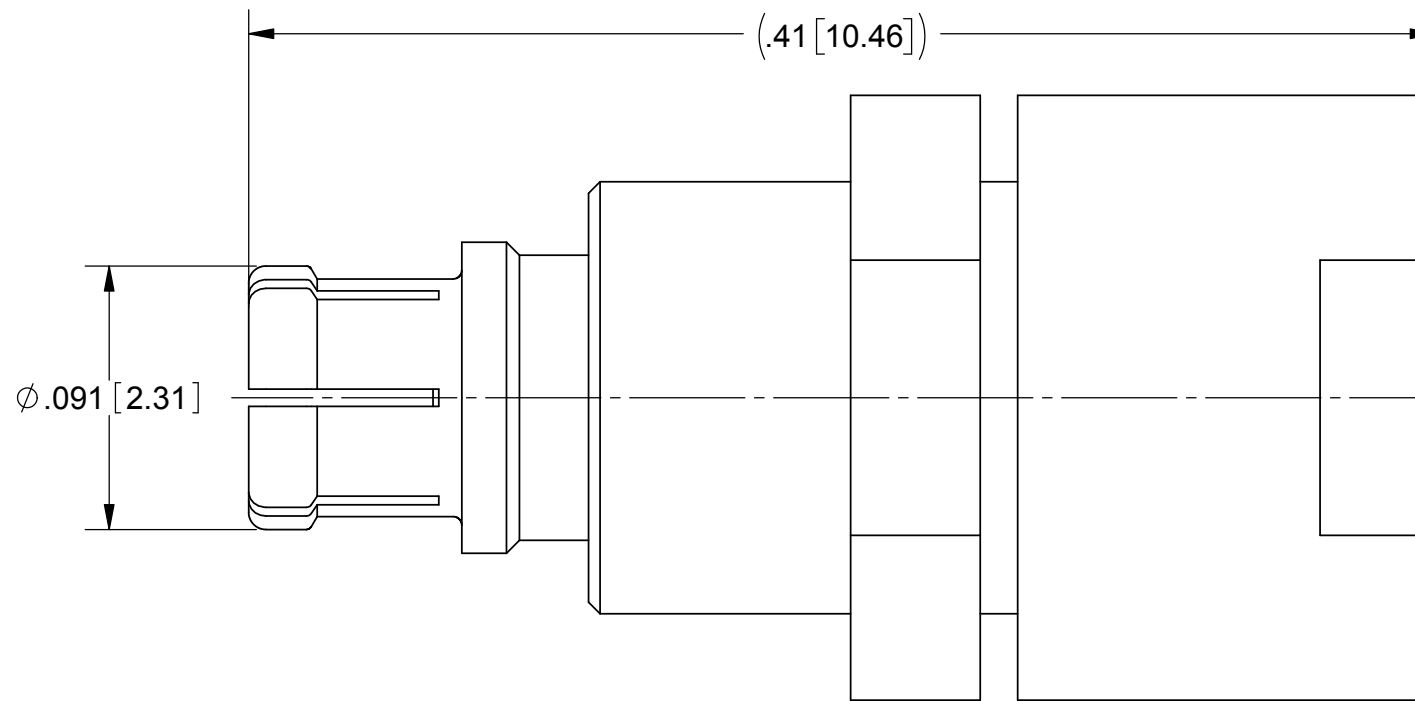
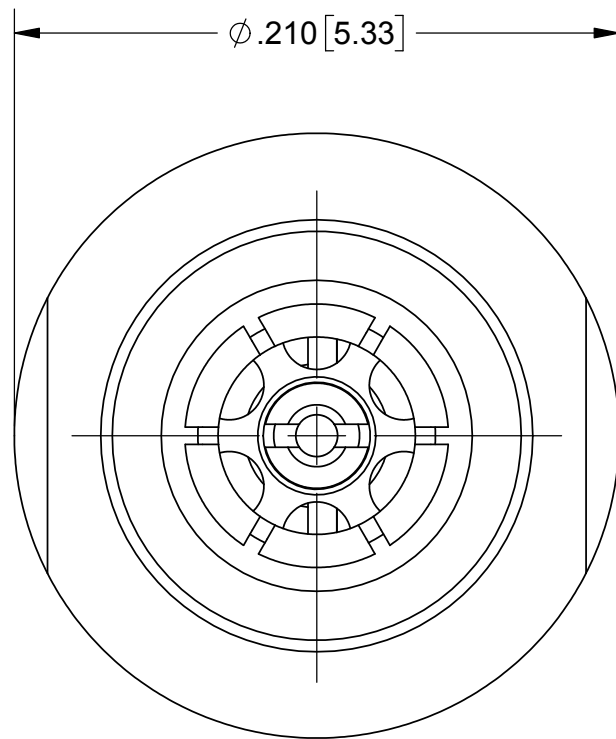


ROHS NON-COMPLIANT

# PRODUCT DATA DRAWING

REVISION HISTORY			
REV	DESCRIPTION	DATE	APPROVED
-	REL. NRN 41618	06/02/17	STW



**MATERIAL:**

**BODY, SLEEVES  
& CONTACT:**

BERYLLIUM COPPER PER ASTM B196, ALLOY No. UNS C17300, TD04.

CAP:

STAINLESS STEEL PER AMS 5640 ALLOY UNS S30300 TYPE 1  
OR ASTM A582, TYPE 303, CONDITION A .

INSULATOR:

POLYETHERIMIDE (ULTEM 1000) PER ASTM D5205.

BELLOWS SPRING:

ELECTRO-DEPOSITED NICKEL: GOLD PLATED

RESISTOR ELEMENT:

ALUMINUM NITRIDE SUBSTRATE WITH TANTALUM NITRIDE RESISTOR  
WITH GOLD PLATED TERMINALS.

FINISH:

**BODY, SLEEVES  
& CONTACT:**

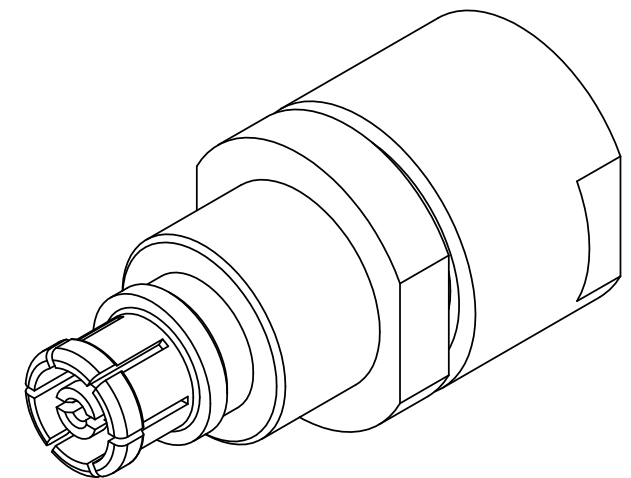
GOLD PER ASTM B488, TYPE II, CODE C, CLASS 1.27,  
OVER NICKEL PER AMS-QQ-N-290, CLASS 1, .00005" MIN.

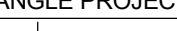
CAP:

PASSIVATED PER AMS 2700

PERFORMANCE:

IMPEDANCE: 50 OHMS  
FREQ. RANGE: DC TO 40.0 GHz  
VSWR:  $1.15 + .011(F \text{ in GHz})$ :1 DC TO 40.0 GHz



MATERIAL:	SEE NOTES	DIMENSIONS ARE IN INCHES TOLERANCES:		UNLESS OTHERWISE SPECIFIED		<b>SV Microwave, Inc.</b>			
FINISH:	SEE NOTES	FRACTIONAL: ±1/64    ANGULAR: X°    ±1°0'    X'X" ±15'		1) ALL DIMENSIONS ARE IN INCHES [MILLIMETERS] 2) ALL DIMENSIONS ARE AFTER PLATING. 3) BREAK CORNERS & EDGES: .005 R. MAX. 4) CHAM. 1ST & LAST THREADS. 5) SURFACE ROUGHNESS 63μMIL-STD-10. 6) DIA.'S ON COMMON CENTERS TO BE CONCENTRIC WITHIN .005 T.I.R. 7) REMOVE ALL BURRS		2400 Centrepark West Drive, Suite 100 West Palm Beach, FL 33409			
SURFACE AREA:	N/A	DECIMAL: .X    ±.030 .XX    ±.010 .XXX    ±.005				TITLE: SMPM FEMALE 1/2 W TERMINATION			
PROPRIETARY		INTERPRET DIMENSIONS AND TOLERANCES PER ASME Y14.5M - 1994							
THE INFORMATION CONTAINED IN THIS DRAWING IS THE SOLE PROPERTY OF SV MICROWAVE, INC. ANY REPRODUCTION IN PART OR AS A WHOLE WITHOUT THE WRITTEN PERMISSION OF SV MICROWAVE, INC IS PROHIBITED.		THIRD ANGLE PROJECTION		DRAWN: JMC 06/02/17					
				CHECKED: STW 06/02/17		SIZE B		CAGE CODE 95077	DWG. NO. 8032-4018
				APPROVED: STW 06/02/17		SCALE: 15:1			SHEET 1 OF 1

# Mouser Electronics

Authorized Distributor

Click to View Pricing, Inventory, Delivery & Lifecycle Information:

[Amphenol:](#)

[8032-4018](#)