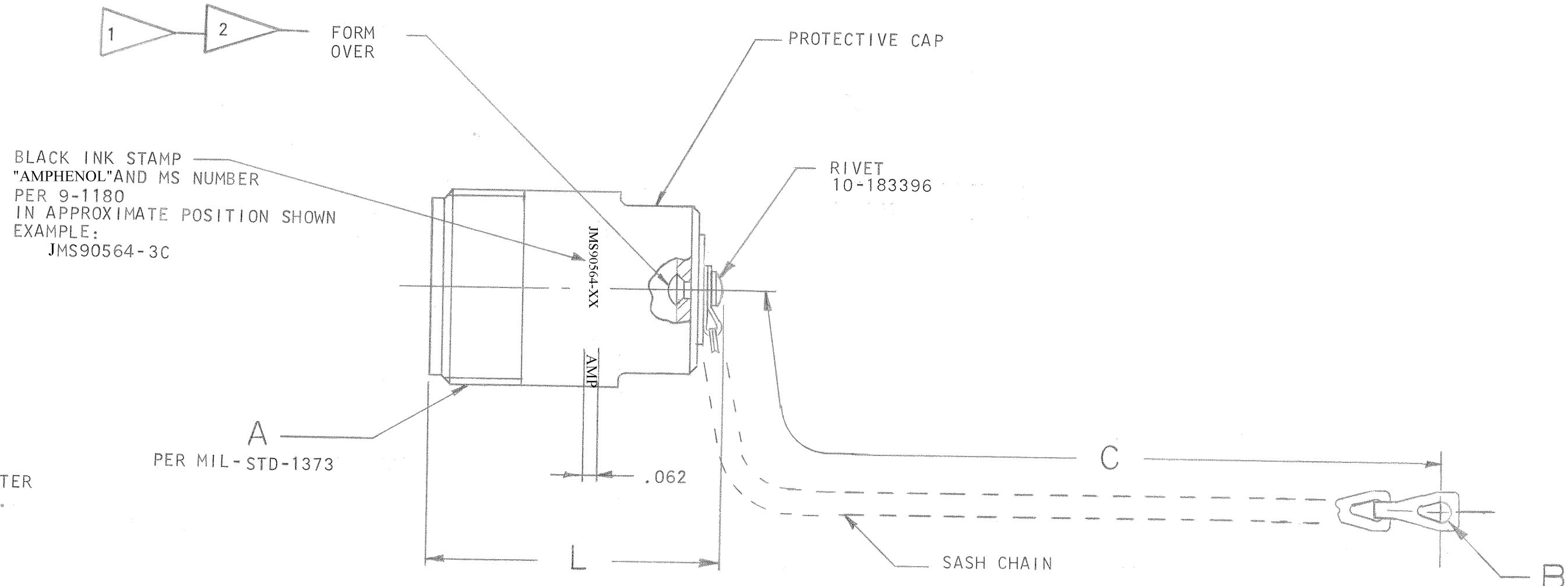


ASSEMBLY NUMBER	JMS NUMBER	PROTECTIVE CAP	CHAIN	A THREAD (PLATED) TYPE DS CLASS 2A	B DIA REF	C ±.250	L MAX	WT-LB
10-473431-28()	JMS90564-1()	SEE INDIVIDUAL DRAWING						
-32() -33()	-3() -4()	10-262147-32() -32()	10-435973-4 -11	2.2500-.1428P-.2857L	.209 .187	6.000 7.500	2.266	
-36() -37()	NOT AVAILABLE							
-40() -41()	MS90564-5() -6()	10-262147-40() -40()	INACTIVATED INACTIVATED	2.7500-.1428P-.2857L	.281 .209	11.000	2.266	
-44() -48()	JMS90564-7() -9()	10-262147-44() -48()	10-560908-2	3.0000-.1428P-.2857L	.266	8.500	2.484	
-52()	-11()	-52()		3.5000-.1428P-.2857L	.266	8.500		

53536-133		REVISIONS			
ZONE	LTR	ER #5113-997	DESCRIPTION ER #6840-2	DATE	APPROVED
	A1				
	A2		SEE CHANGE NOTICE ECN: 54525-446	1-24-73	BARTKOW
	B		(DEV); WAS WIRE ROPE ASSY COL, NOTES 1 & 2 & LOCAL NOTE; CHG PICT; INACTIVATED -40 & -41 ECN 57466-1	4-21-76	Randall
	C		(MFG) REV COMPONENT PART (RIVET) LENGTH ECN 58134-3	3-14-77	BOWKER
	D		(CLII) REM DATA FOR -28(); ADDED 'SEE INDIVIDUAL DRAWING' ECN: 75005-85	3/21/84	BACHMAN
	E		(CLII) WAS 10-101954-2 (FOR -XX5 FINISH), 10-101954-3 (FOR -XX9 FINISH)(RIVETS) ECN: 75605-1	12-17-84	EDWARDS
	F		(CLII) ADD NEW 22992 REQUIREMENTS ECN: A2915	7/24/07	JHEATH



6. TO COMPLETE MS NUMBER, ADD LETTER "C" FOR CONDUCTIVE FINISH (-XX9) OR LETTER "N" FOR NON-CONDUCTIVE FINISH (-XX5).
5. FOR RELEASE STATUS OF DESIRED UNIT, SEE SEPARATE PARTS LIST.
4. TO COMPLETE ASSEMBLY NUMBER AND PROTECTIVE CAP NUMBER, ADD LAST DIGIT SUFFIX FOR DESIRED FINISH:  
 ANODIC COATING SUFFIX -XX5  
 OLIVE DRAB, NICKEL BASE SUFFIX -XX9
3. CAP - MATERIAL: ALUMINUM ALLOY  
 FINISH: SEE NOTE 4  
 SASH CHAIN - MATERIAL: STAINLESS STEEL
2. AFTER RIVETING, CAP MUST WITHSTAND 15 PSI INTERNAL AIR PRESSURE FOR 15 SECONDS WITH NO VISIBLE LEAKAGE WHEN SUBMERGED IN WATER.
1. SASH CHAIN MUST MOVE FREELY ON PROTECTIVE CAP AFTER ASSEMBLY.

NOTES:

FIND NO.	QTY REQD	CODE IDENT	PART NUMBER	DESCRIPTION	NOTE REF				
PARTS LIST									
UNLESS OTHERWISE SPECIFIED LINEAR DIMENSIONS ARE IN INCHES. TOLERANCES: .XXX ± .010, .XX ± .03, .X ± .1, ANGLES ± 2°. OTHER STANDARDS PER 9-3800 AND MIL-D-1000. NOTE REF			SIGNATURES PREPARED WHITNEY CHECKED B. Tomco MATERIAL	DATES 5-30-72 6-26-72	AMPHENOL CORPORATION 40-60 DELAWARE AVE SIDNEY, NY 13838  TITLE: CAP, PROTECTIVE, PLUG, ELECTRICAL CONNECTOR, TYPE HC				
MATERIAL SPEC	PROCESS SPEC 9-1180		APPROVED APPROVED	6-5-72 6-22-72					
<table border="1"> <tr> <td>SIZE</td> <td>CODE IDENT NO.</td> </tr> <tr> <td>C</td> <td>77820</td> </tr> </table>						SIZE	CODE IDENT NO.	C	77820
SIZE	CODE IDENT NO.								
C	77820								
NEXT ASSEMBLY		10-523432/37	10-523420/25	SCALE NONE	WT SEE COLUMN				
				REF 10-189243	SHEET				

THIS DOCUMENT CONTAINS INFORMATION OWNED BY THE BENDIX CORPORATION OR DEVELOPED AT ITS OWN PRIVATE EXPENSE AND MAY NOT BE USED, REPRODUCED OR DISCLOSED IN WHOLE OR IN PART FOR DESIGN, MANUFACTURE, OR PROCUREMENT WITHOUT THE WRITTEN PERMISSION OF THE BENDIX CORPORATION - ELECTRICAL COMPONENTS DIVISION. BY RETENTION OF THIS DOCUMENT, THE HOLDER AGREES THAT IT SHALL NOT BE USED IN ANY MANNER PROHIBITED HEREIN.

# Mouser Electronics

Authorized Distributor

Click to View Pricing, Inventory, Delivery & Lifecycle Information:

[Amphenol:](#)

[MS90564-4C](#)