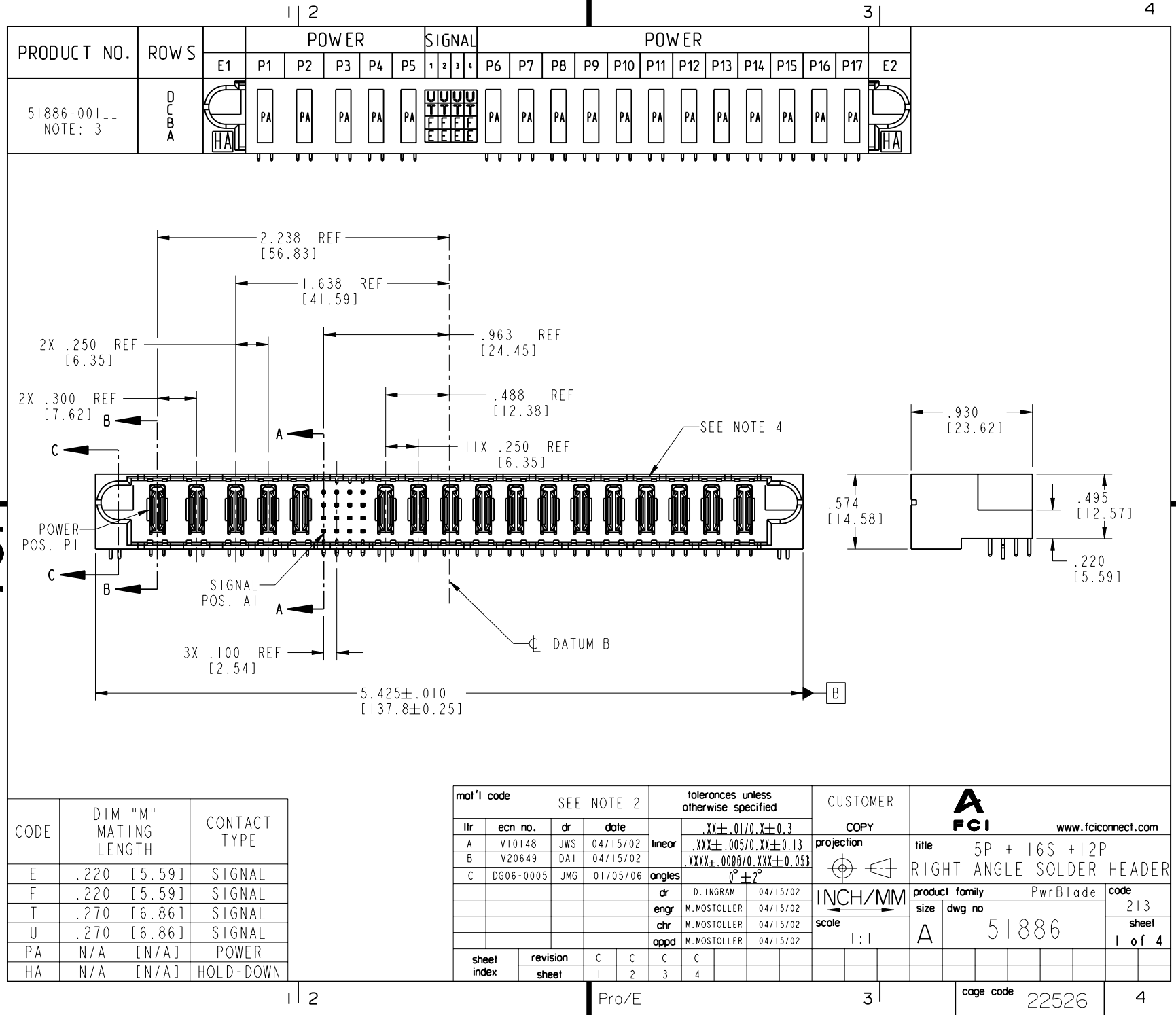


Tous droits strictement réservés. Reproduction ou communication à des tiers interdite sous quelque forme que ce soit sans autorisation écrite du propriétaire. Propriété de c FCI. Droits de reproduction FCI.

FCI

All rights strictly reserved. Reproduction or issue to third parties in any form without written authority from the proprietor. Property of FCI. Copyright FCI.

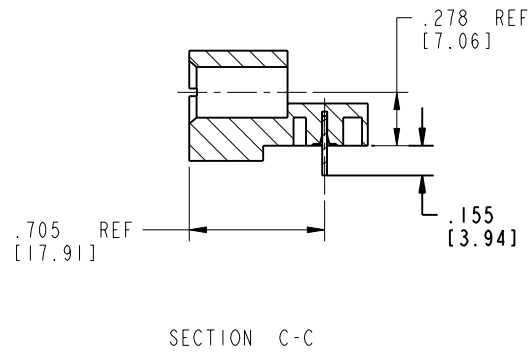
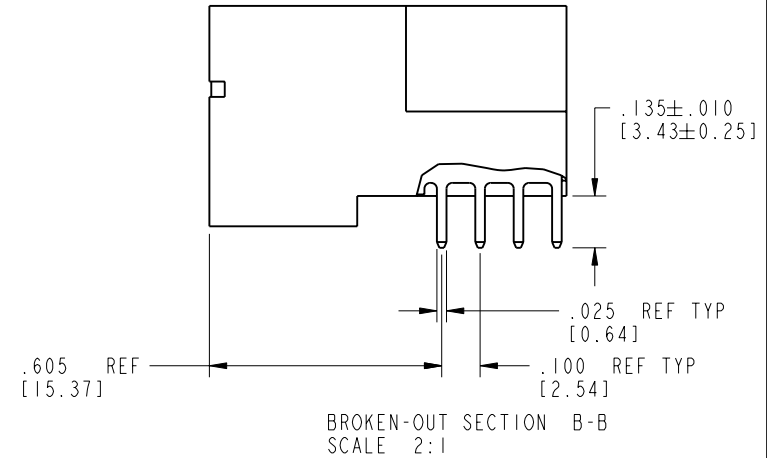
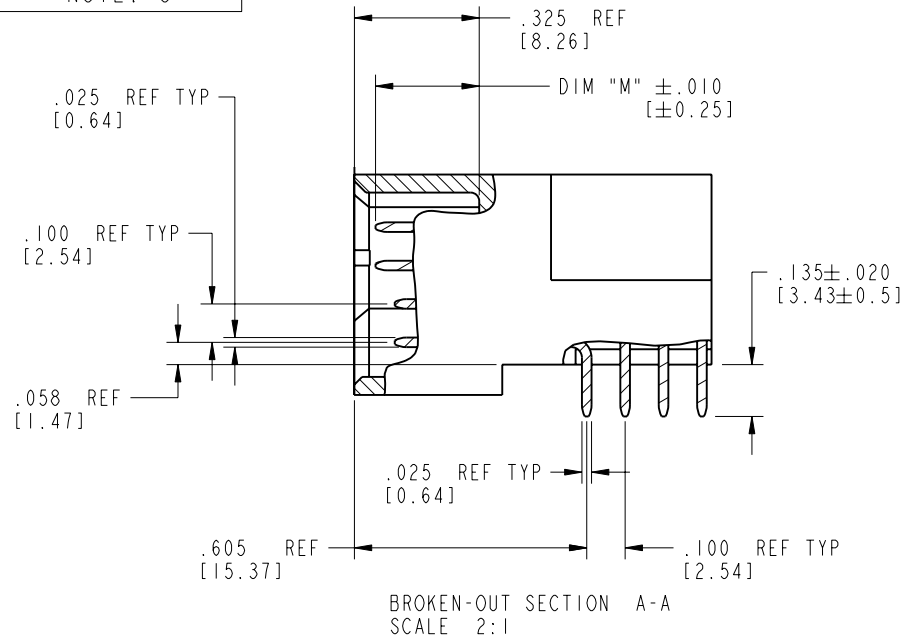



Tous droits strictement réservés. Reproduction ou communication a des tiers interdite sous quelque forme que ce soit sans autorisation écrite du propriétaire. Propriété de c FCI. Droits de reproduction FCI.

FCI

All rights strictly reserved. Reproduction or issue to third parties in any form whatever is not permitted without written authority from the proprietor. Property of FCI. Copyright FCI.

PRODUCT NUMBER
51886-001__
NOTE: 3



mat'l code				tolerances unless otherwise specified		CUSTOMER		 www.fciconnect.com	
lfr	ecn no.	dr	date	linear	angular	COPY	projection		
C				.XX±.01/0.X±0.3				title	5P + 16S + 12P
				.XXX±.005/0.XX±0.13				RIGHT ANGLE SOLDER HEADER	
				.XXXX±.0020/0.XXX±0.051				product family	PwrBlade
								size	dwg no
								A	51886
								code	213
								sheet	2 of 4
sheet index	revision sheet								

Pro/E

cage code 22526

PDM: Rev:C

STATUS: Released

Printed: Oct 07, 2006

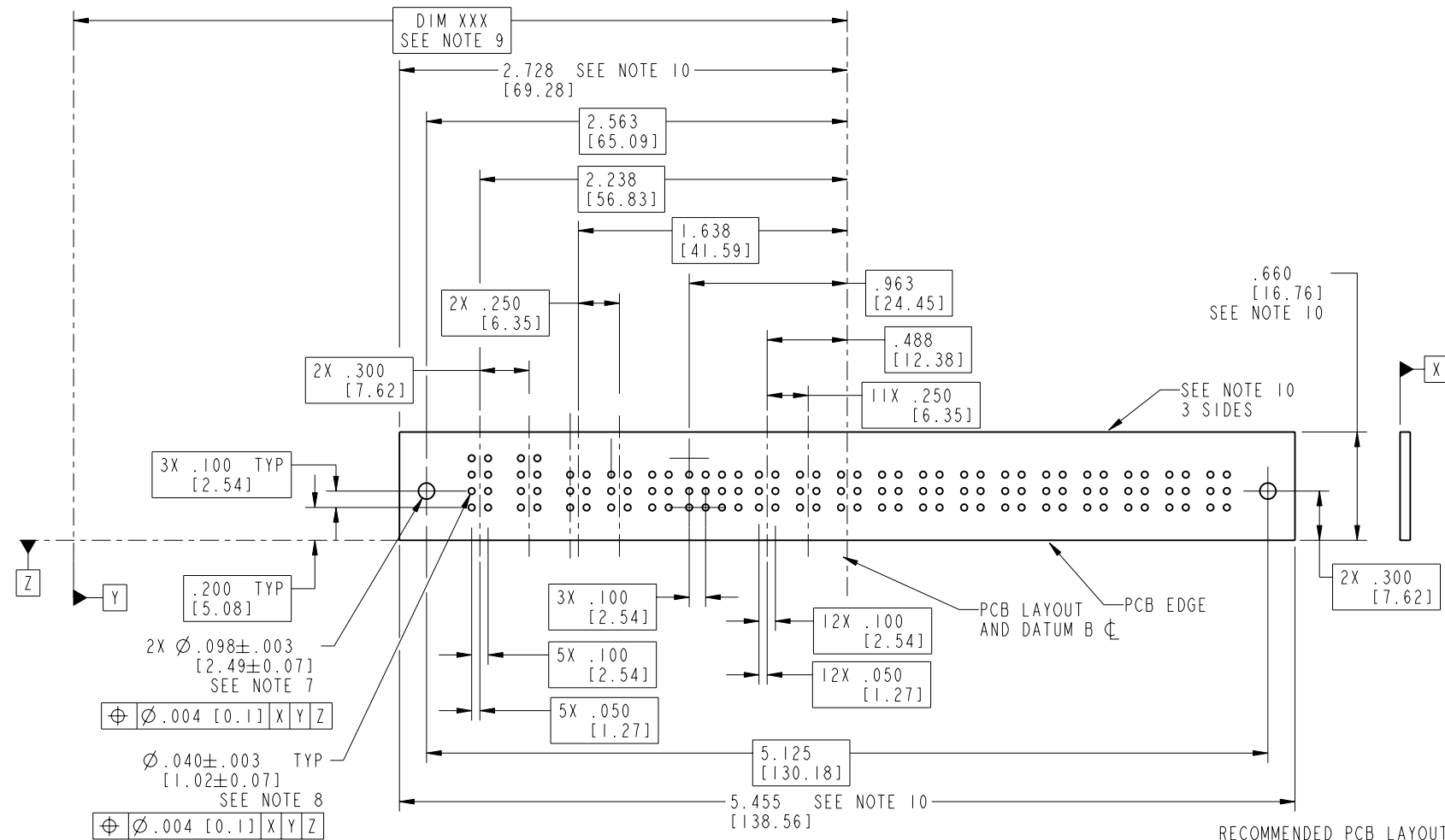
Tous droits strictement réservés. Reproduction ou communication à des tiers interdite sous quelque forme que ce soit sans autorisation écrite du propriétaire. Propriété de c FCI. Droits de reproduction FCI.

All rights strictly reserved. Reproduction or issue to third parties in any form whatever is not permitted without written authority from the proprietor. Property of FCI. Copyright FCI.

PRODUCT NUMBER

51886-001--

NOTE: 3



mat'l code				tolerances unless otherwise specified		CUSTOMER	
lfr	ecn no.	dr	date	linear	.XX±.01/0.X±0.3	COPY	
C				linear	.XXX±.005/0.XX±0.13	projection	
				angles	.XXX±.0020/0.XX±0.051		
				dr	D. INGRAM 04/15/02	INCH/MM	
				enr	M. MOSTOLLER 04/15/02	scale	
				chr	M. MOSTOLLER 04/15/02	1:1	
				appd	M. MOSTOLLER 04/15/02		
sheet index	revision sheet						

FCI www.fciconnect.com

title 5P + 16S + 12P
RIGHT ANGLE SOLDER HEADER

product family PwrBlade code 213

size dwg no 51886 sheet 3 of 4

cage code 22526

Pro/E

PDM: Rev:C

STATUS: Released

Printed: Oct 07, 2006

PRODUCT NUMBER
51886-001__
NOTE: 3

NOTES:


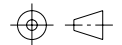

1. DIMENSIONS AND TOLERANCES ARE IN ACCORDANCE WITH ASME Y14.5M, 1994 UNLESS OTHERWISE SPECIFIED.

CONNECTOR NOTES:

2. HOUSING MATERIAL: UL 94 V-0 GLASS FILLED
HIGH-TEMP THERMOPLASTIC
POWER CONTACT MATERIAL: COPPER ALLOY
SIGNAL PIN MATERIAL: COPPER ALLOY
3. 51886-001;51886-001LF;51886-001GLF PLATING SPEC. SEE PRINT:10064183
4. MANUFACTURER'S NAME, P/N, AND DATE CODE TO APPEAR ON THIS SURFACE.
5. PRODUCT SPECIFICATION GS-12-149.
APPLICATION SPECIFICATION BUS-20-067.

PCB NOTES:

6. ALL HOLE DIAMETERS ARE FINISHED HOLE SIZE.
7. MOUNTING HOLES, WHERE APPLICABLE, ARE UNPLATED.
8. $\varnothing .0453 \pm 0.0010$ [1.151 \pm 0.025] DRILLED HOLES PLATED WITH
.0003 [0.008] MIN SnPb OVER .001 [0.03]
TO .003 [0.08] Cu PLATING TO ACHIEVE
 $\varnothing .040 \pm .003$ [1.02 \pm .07] HOLE.
9. "DIM XXX" TO BE DETERMINED BY THE CUSTOMER.
10. CONNECTOR KEEP-OUT ZONE.

mat'l code				SEE NOTE 2		tolerances unless otherwise specified		CUSTOMER		<div> www.fciconnect.com</div>	
lfr	ecn no.	dr	date	linear	.XX±.01/0.X±0.3			projection 	title 5P + 16S + 12P RIGHT ANGLE SOLDER HEADER		
C					.XXX±.005/0.XX±0.13						
					.XXXX±.0020/0.XXX±0.051						
				angles	0°±2°			INCH/MM 	product family		code
				dr	D. INGRAM	04/15/02	size		dwg no	PwrBlade	213
				engr	M. MOSTOLLER	04/15/02					
				chr	M. MOSTOLLER	04/15/02					
				appd	M. MOSTOLLER	04/15/02	scale	1:1	A	51886	sheet 4 of 4
sheet index		revision sheet									

cage code 22526

Pro/E

Mouser Electronics

Authorized Distributor

Click to View Pricing, Inventory, Delivery & Lifecycle Information:

[FCI / Amphenol:](#)

[51886-001LF](#)