
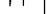
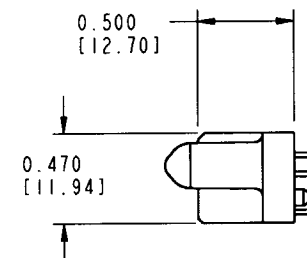
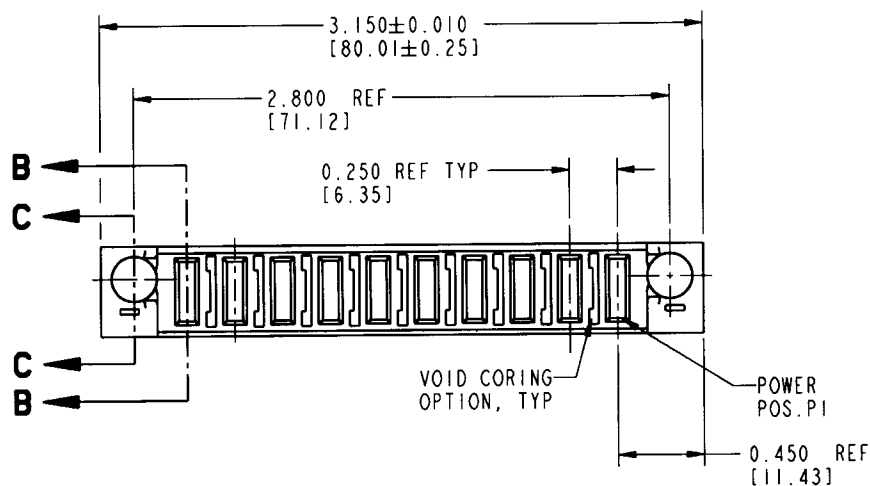
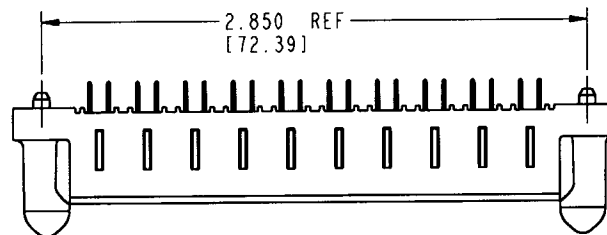


Tous droits strictement réservés. Reproduction ou communication à des tiers interdite sous quelque forme que ce soit sans autorisation écrite du propriétaire. Propriété de c FCI. Droits de reproduction FCI.

All rights strictly reserved. Reproduction or issue to third parties in any form whatever is not permitted without written authority from the proprietor. Property of FCI. Copyright FCI.



PRODUCT No.	ROWS	POWER											E1
		E2	P10	P9	P8	P7	P6	P5	P4	P3	P2	P1	
51629-001	D C B A		PA	PA	PA	PA	PA	PA	PA	PA	PA	PA	



ITEM NO.	CONTACT TYPE
PA	POWER

mat'l code				NOTE 1		tolerances unless otherwise specified		CUSTOMER COPY	ELECTRONICS www.fciconnect.com	
lir	ecn no.	dr	date							
A	V90695	CHB	03-16-99	linear		.XX ± .01 / .X ± .3		 IN/MM scale 1:1	title 10P VERTICAL SOLDER RECEPTACLE product family PwrBlade code 213 size dwg no 51629 A SHEET 1 OF 2	cage code 22526
B	V90876	SAR	04-13-99			.XXX ± .005 / .XX ± .13				
C	V91343	CHB	11-10-99	angles		.XXX ± .0020 / .XXX ± .051				
D	V01586	EKK	07-13-00	dr	C. BAROT	03-16-99				
E	V11188	JRW	04-12-01	enrg	J. BROWN	03-16-99				
				chr	J. BROWN	03-16-99				
				appd	J. BROWN	03-16-99				
sheet index	revision sheet	E	E							
		I	2							

form no. 7530-001-103

PDM: Rev:E

STATUS: Released

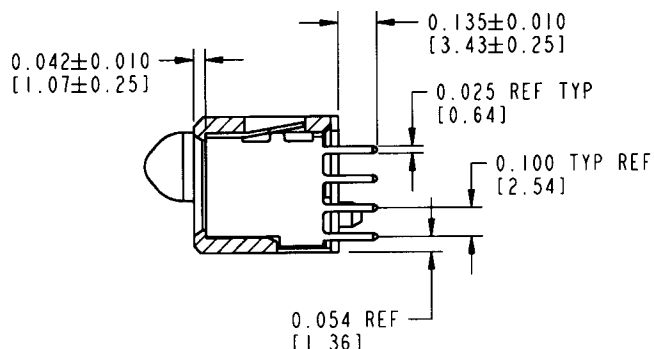
Printed: Oct 07, 2006

Tous droits strictement réservés. Reproduction ou communication à des tiers interdite sous quelque forme que ce soit sans autorisation écrite du propriétaire. Propriété de c FCI. Droits de reproduction FCI.

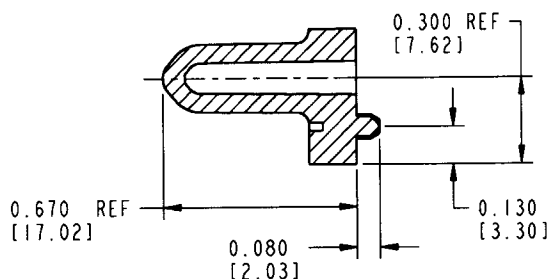
All rights strictly reserved. Reproduction or issue to third parties in any form whatever is not permitted without written authority from the proprietor. Property of FCI. Copyright FCI.



PRODUCT NUMBER
51629-001



SECTION B-B



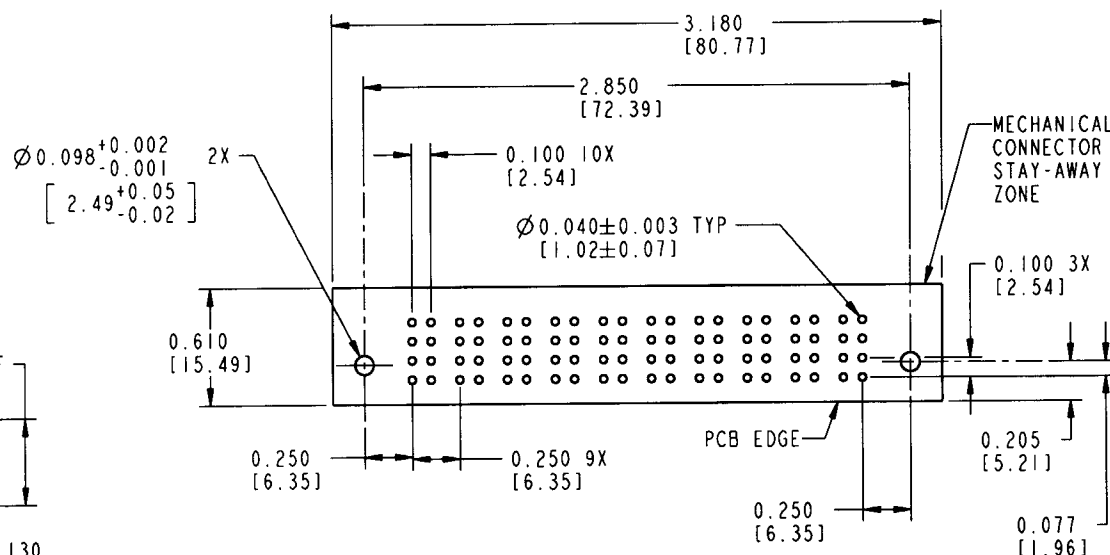
SECTION C-C

CONNECTOR NOTES:

- ① HOUSING MATERIAL: GLASS FILLED HIGH TEMP THERMOPLASTIC UL94 V-0
POWER CONTACT MATERIAL: COPPER ALLOY
2. PLATING OPTIONS:
POWER CONTACTS: 50u"/1.27u Ni UNDER ALL: WITH
30u"/.76u Au ON CONTACT AREA,
AND SnPb ON PCB INTERFACE.
- ③ MANUFACTURER NAME, P/N, AND DATE CODE TO APPEAR ON THIS SURFACE.

PCB NOTES:

4. ALL DIMENSIONS ARE BASIC UNLESS OTHERWISE SPECIFIED
5. ALL THROUGH HOLES ARE LOCATED WITH A TRUE POSITION OF 0.004"
6. ALL DIAMETERS ARE FINISHED HOLE SIZES
7. $\varnothing 0.0453 \pm 0.0010$ [1.151 ± 0.025] DRILLED HOLES PLATED WITH
0.0003 [0.008] MIN SnPb OVER 0.001 [0.03] TO 0.003 [0.08] Cu
PLATING TO ACHIEVE A $\varnothing 0.040 \pm 0.003$ [1.02 ± 0.07] HOLE.



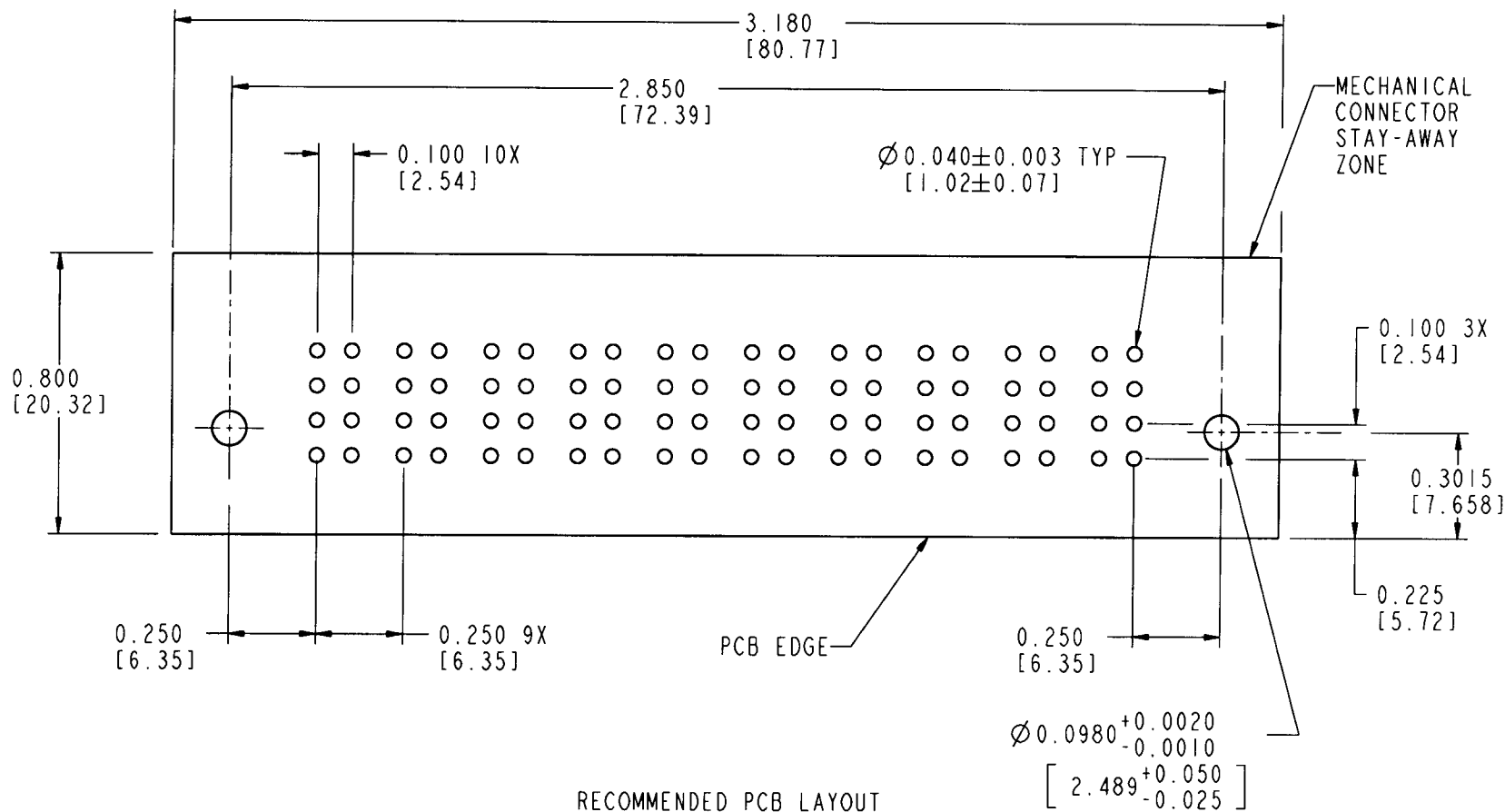
RECOMMENDED PCB LAYOUT




mat'l code				tolerances unless otherwise specified				CUSTOMER COPY		ELECTRONICS www.fciconnect.com	
ltr	ecn no.	dr	date	linear	$.XX \pm .01 / .X \pm .3$ $.XXX \pm .005 / .XX \pm .13$ $.XXXX \pm .0020 / .XXX \pm .051$	projection		title		10P VERTICAL SOLDER RECEPTACLE	
E				angles	$0^\circ \pm 2^\circ$			product family		PwrBlade	code
				dr	C. BAROT 03-16-99	1 IN/MM		size		dwg no	213
				enrg	J. BROWN 03-16-99	scale	3:2	A		51629	SHEET
				chr	J. BROWN 03-16-99						2
				appd	J. BROWN 03-16-99						
sheet	revision										
index	sheet										
										cage code	22526



PRODUCT NUMBER

51629-001



mat'l code				tolerances unless otherwise specified		CUSTOMER COPY		 ELECTRONICS www.fciconnect.com	
ltr	ecn no.	dr	date	linear	XX ± .01 / X ± .3	projection 	title 10P VERTICAL SOLDER RECEPTACLE	product family PwrBlade	code 213
D					XXX ± .005 / XX ± .13				
					XXXX ± .0020 / XXX ± .051				
					angles 0° ± 2°				
		dr		C. BAROT	03-16-99	IN/MM 	size A	dwg no 51629	SHEET 3
		enrg		J. BROWN	03-16-99				
		chr		J. BROWN	03-16-99				
		appd		J. BROWN	03-16-99				
sheet index		revision sheet							

Mouser Electronics

Authorized Distributor

Click to View Pricing, Inventory, Delivery & Lifecycle Information:

[FCI / Amphenol:](#)

[51629-001LF](#)