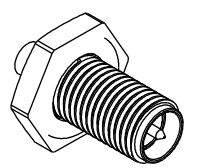
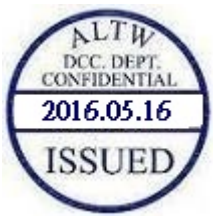
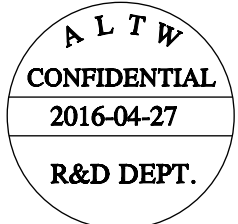
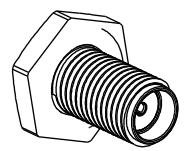


THIS DOCUMENT IS SUBJECT TO CHANGE WITHOUT NOTICE. IT IS CONFIDENTIAL AND A PROPERTY OF Amphenol LTW. DISCLOSURE TO THIRD PARTY HAS TO BE AUTHORIZED BY Amphenol LTW.

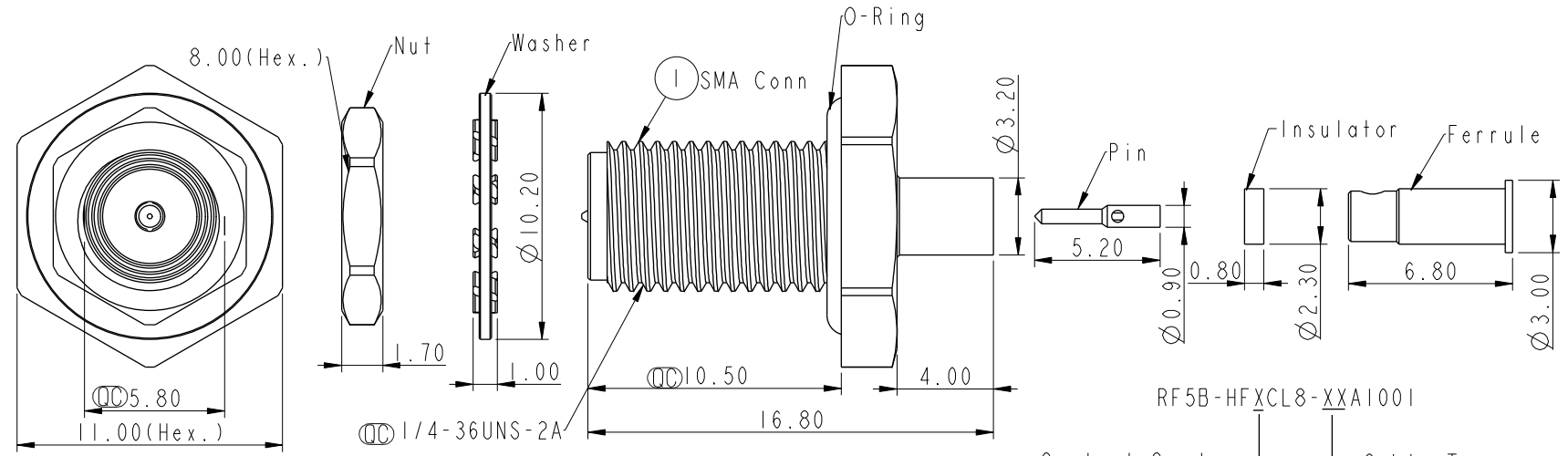
REV.	ECN NO.	DATE	SIGN	DESCRIPTION
A	Initial Release	2016/04/27	Kaven	Change Rev.01 To Rev.A



(M): Male Pin



(F): Female Pin



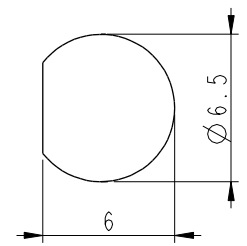
RF5B-HFXCL8-XXA1001

Contact Gender
(M): Male Pin
(F): Female Pin

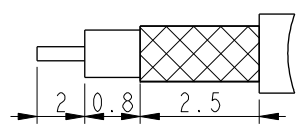
Cable Type
(29): RG178
(53): 1.13mm
(54): 1.32mm
(55): 1.37mm

- * Material:
Shell: Brass, Gold Plated
Connector Body: Brass, Gold Plated
Center Contact: Brass, Gold Plated
Insulator: PTFE
Crimp Ferrule: Brass, Gold Plated
O'ring: Silicone, Red
- * Cable Assembly:
Contact Pin: Solder or Crimp
Crimped Pin Size SQ.028"
Ferrule: Solder or Crimp
Crimped Size HEX.068"

- Note:
- * \varnothing Important Dimension To Check.
 - * Electrical:
Impedance: 50 Ω
Frequency: 6GHz
V.S.W.R
0-3Ghz: 1.3(Max), 4-6Ghz: 1.5(Max)
 - * Mechanical & Environmental:
Mating: 1/4"-36UNS
Temperature: -40 $^{\circ}$ c~105 $^{\circ}$ c
(It's Subject To ALTW Testing Condition.)
Unmated Waterproof Rating: IPx8
(Under Water 1M 24hours)
Salt Spary Corrosion Test: 48h
 - * Panel Thickness Max: 2.3mm.



Recommended Panel Cut-Out



Recommend Cable Stripping DIM'S

UNIT:mm		TITLE SMA STRAIGHT BULKHEAD JACK CONN		ITEM NO		DRAWN BY Kaven		DATE 2016/04/27	
TOLERANCE .X ±0.25 .XX ±0.1 .XXX ±0.05 ANGLES ±1 $^{\circ}$		SCALE 7:2	SIZE A4	SHEET 1 OF 1	DWG NO RF5B-HFXCL8-XXA1001	CHECKED BY Doreen		DATE 2016/04/27	
REV. A		WC-REV. A.1	\varnothing Inspection item		CUSTOMER ALTW	APPROVED BY Lisa		DATE 2016/04/27	

Amphenol LTW
安費諾亮泰企業股份有限公司

Mouser Electronics

Authorized Distributor

Click to View Pricing, Inventory, Delivery & Lifecycle Information:

[Amphenol:](#)

[RF5B-HFFCL8-53A1001](#) [RF5B-HFMCL8-53A1001](#)