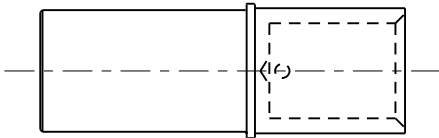


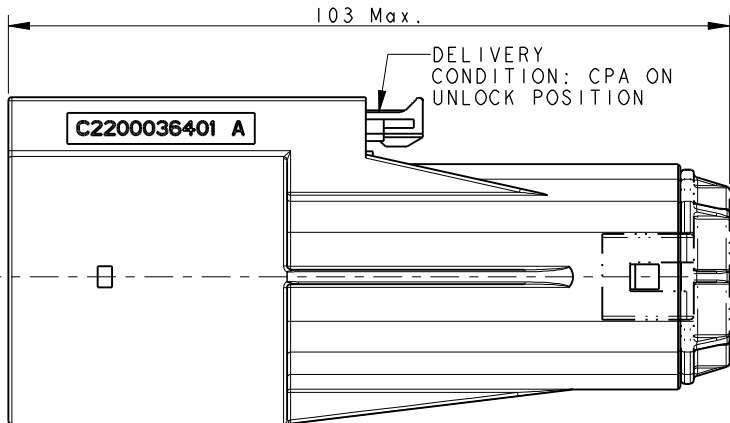
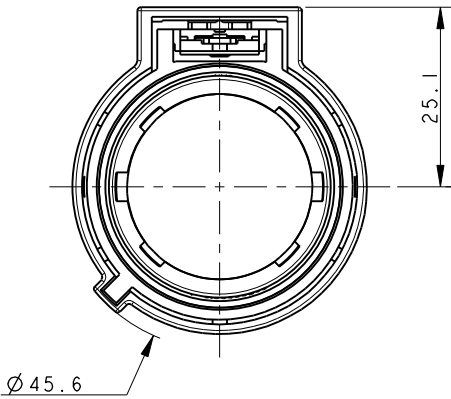
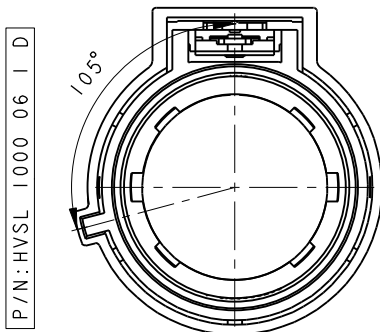
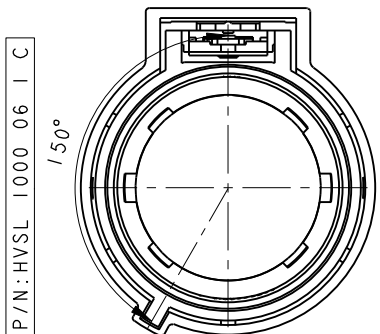
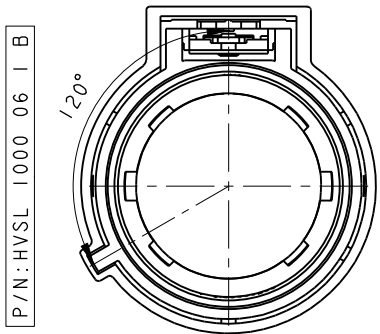
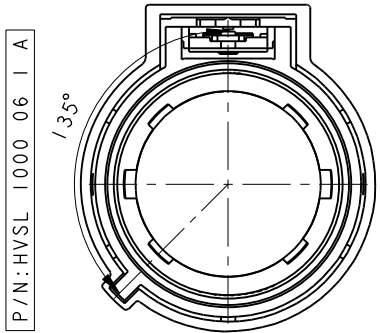
REV	ECN	DESCRIPTION	DATE	MODIFIED
1		PRE-RELEASE	20/03/13	Eric Zhou
2		ADD WIRE DIAMETER	15/09/15	Robin Yuan

CUSTOMER DRAWING

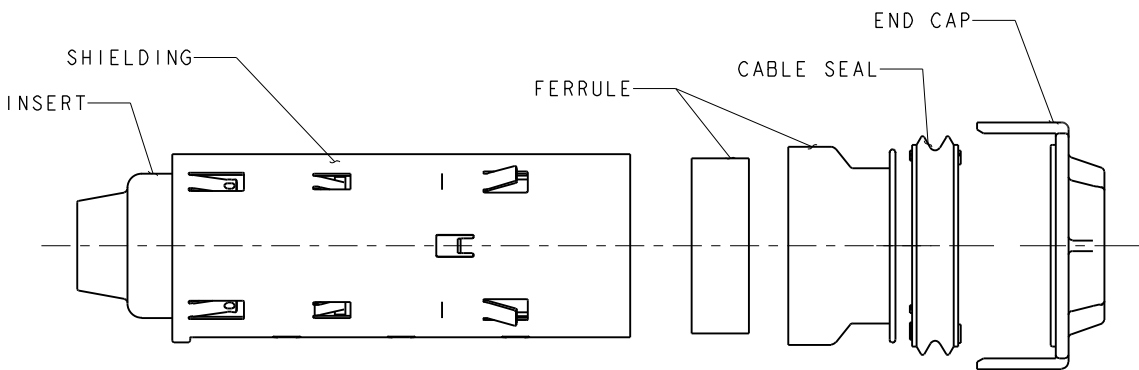


SOCKET CONTACT

P/N: C4200036161 --70 mm² WIRE
C4200036162 --50 mm² WIRE
C4200036163 --35 mm² WIRE



HVSL 1000 06 1 X




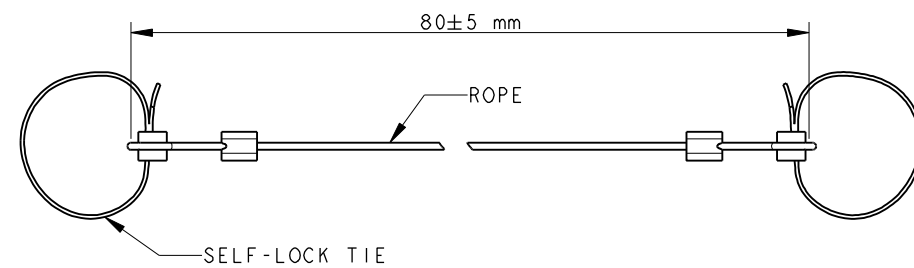
KIT OF SOCKET INSERT

P/N: C4220036011 --70 mm² WIRE OD=19.0 ± 0.7MM
C4220036012 --50 mm² WIRE OD=16.5 ± 0.4MM
C4220036013 --35 mm² WIRE OD=14.2 ± 0.4MM
C4220036014 --25 mm² WIRE OD=11.9 ± 0.3MM

NOTES:

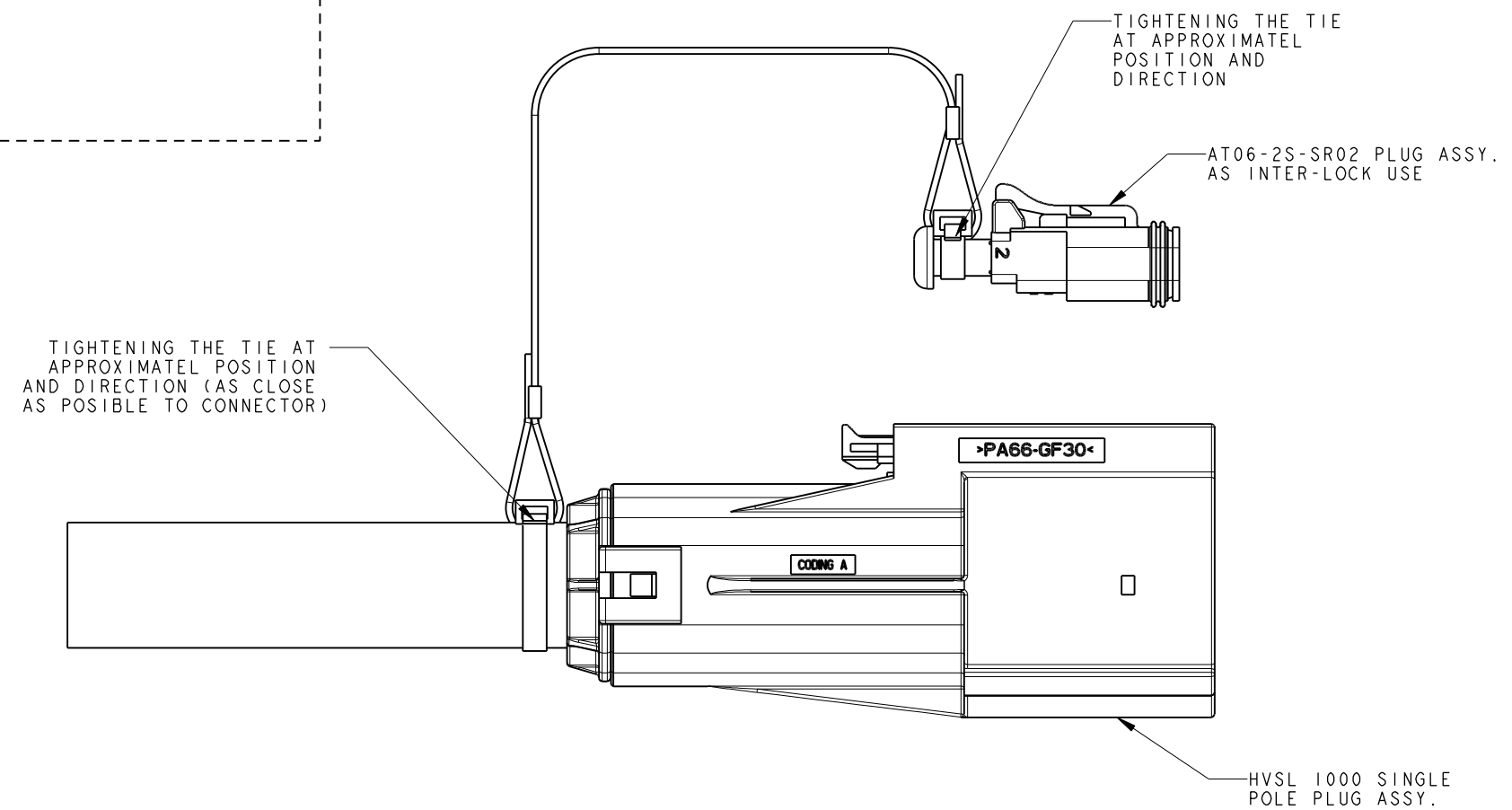
- MATERIAL & FINISH:
PLASTIC BODY: THERMOPLASTICS UL 94V-0 ORANGE COLOR
SOCKET CONTACT: COPPER ALLOY SILVER PLATED
SHIELDING: COPPER ALLOY TIN PLATED
FERRULE: STAINLESS STEEL
CABLE SEAL: SILICONE RUBBER
- ELECTRONICAL CHARACTERISTICS:
HIGH VOLTAGE RATED 1000 V DC MAX.
CURRENT RATED 250 A MAX.
WITHSTANDING VOLTAGE 3000 V AC
PRODUCTS ARE COMPLIANCE WITH EN 60664-1 POLLUTION II
- ENVIROMENT CHARACTERISTICS:
IP67 IP6K9K RATED (WHEN MATING)
IP2XB RATED FOR FINGER TOUCH-PROOF
- DELIVERY WITHOUT CONTACTS. THE CONTACTS SHOULD BE ORDERED SEPARATELY.
- SEE APCD-TD-049 FOR ASSEMBLY INSTRUCTION AND EXTERNAL HVIL SET-UP.

DIMENSIONS	TOLERANCES	PROJECTION	Amphenol Pcd Shenzhen		TITLE				
ANSI Y14.5M	.X ±0.5		ENGR		HVSL 1000 06 1 X PLUG ASSEMBLY				
UNITS: MM	.XX ±0.20		Robin Yuan 15/09/15						
Pro/E FILE	ANGLES ±0.5°								
ORIGINAL NOT FOR CUSTOMER DISTRIBUTION	THIS DOCUMENT CONTAINS PROPRIETARY INFORMATION WHICH IS THE CONFIDENTIAL PROPERTY OF AMPHENOL PCD SHENZHEN	CHKD		SIZE	DWG NO.		REV		
		APPD		A3	C-HVSL1000061X		2		
				CODE: 58982		SCALE: 1:1		SHEET 1 OF 2	



ATTACHEMENT ROPE
FOR AT06-2S-SR02 PLUG
P/N: C210003608

HOW TO SET-UP EXTERNAL INTER-LOCK



AT06-2S AS INTER-LOCK USE
ATTACHMENT VIEW

SIZE	DWG NO.	REV
A3	C-HVSL1000061X	2
CODE: 58982	SCALE: 1:1	SHEET 2 OF 2

Mouser Electronics

Authorized Distributor

Click to View Pricing, Inventory, Delivery & Lifecycle Information:

Amphenol:

[HVSL1000061B150](#) [HVSL1000061B070](#) [HVSL1000061A150](#) [HVSL1000061B050](#) [HVSL1000061A035](#)
[HVSL1000061B135](#) [HVSL1000061B035](#) [HVSL1000061B170](#) [HVSL1000061A170](#) [HVSL1000061A135](#)
[HVSL1000061A070](#) [HVSL1000061A050](#)