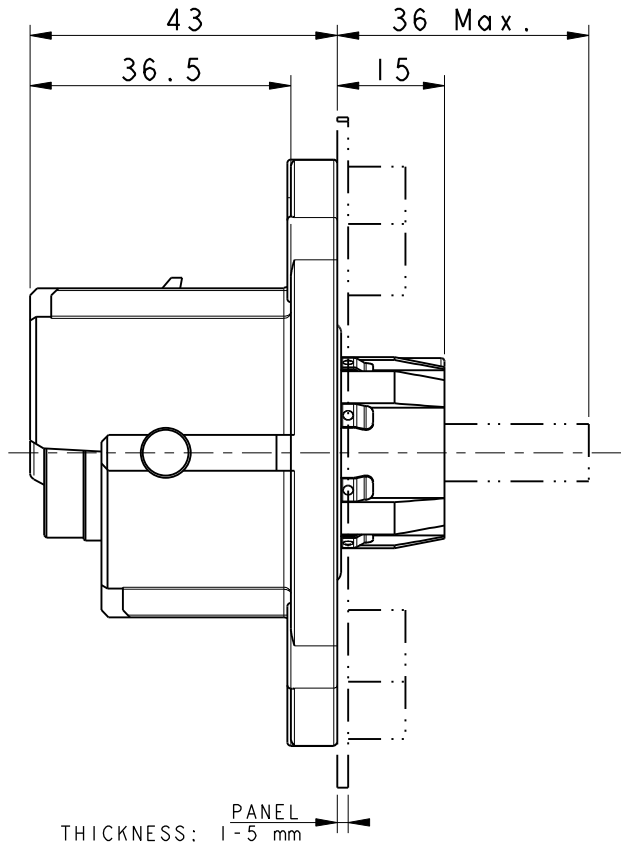
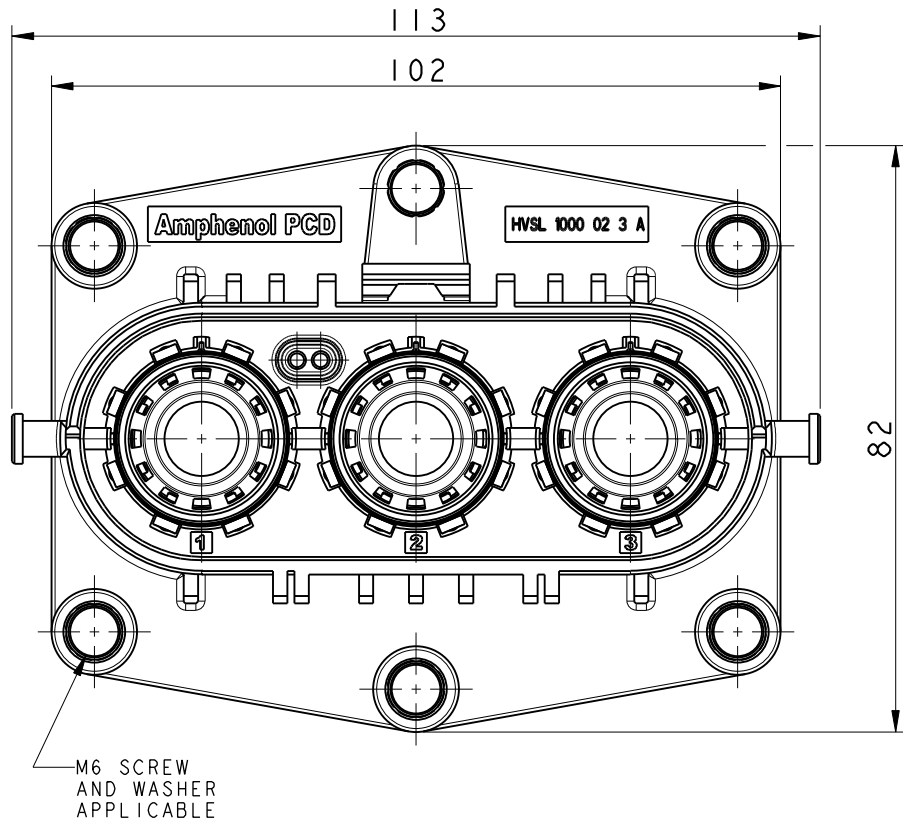
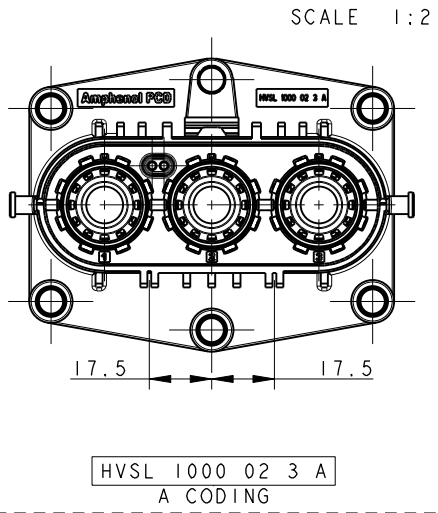


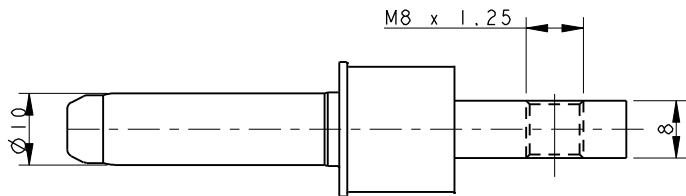
CUSTOMER DRAWING

REV	ECN	DESCRIPTION	DATE	MODIFIED
1		PRE-RELEASE	19/08/13	Eric
2		CHANGED THE POWER CONTACT	23/10/13	Eric
3		ADD WIRE DIAMETER	15/09/15	Robin Yuan

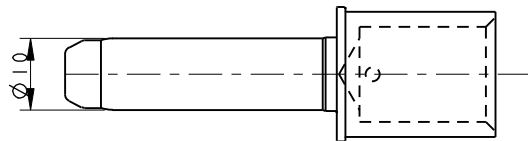


NOTES:

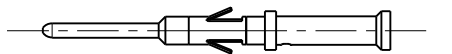
- MATERIAL & FINISH:  
PLASTIC BODY: THERMOPLASTICS UL 94V-0 ORANGE COLOR  
POWER CONTACT: COPPER ALLOY SILVER PLATED  
IL CONTACTS: COPPER ALLOY GOLD PLATED  
SHIELDING: COPPER ALLOY TIN PLATED  
RING: STAINLESS STEEL  
O-RING: SILICONE RUBBER
- ELECTRONICAL CHARACTERISTICS:  
HIGH VOLTAGE RATED 1000 V DC MAX.  
CURRENT RATED 250 A MAX.  
WITHSTANDING VOLTAGE 3000 V AC  
PRODUCTS ARE COMPLIANCE WITH EN 60664-1 POLLUTION II
- ENVIRONMENT CHARACTERISTICS:  
IP67 IP6K9K RATED (WHEN MATING)  
IP2XB RATED FOR FINGER TOUCH-PROOF
- DELIVERY WITHOUT CONTACTS. THE CONTACTS SHOULD BE ORDERED SEPARATELY.
- SEE APCD-TD-073 FOR ASSEMBLY INSTRUCTION.



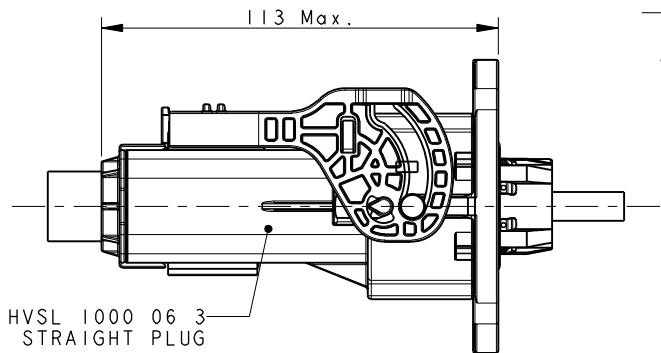
POWER CONTACT (THREAD FOR BUS-BAR)  
P/N: C4200036152



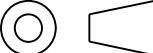
POWER CONTACT (CRIMP FOR WIRE)  
P/N: C42000361511 --70 mm<sup>2</sup> WIRE OD=19.0 ± 0.7MM  
C42000361512 --50 mm<sup>2</sup> WIRE OD=16.5 ± 0.4MM  
C42000361513 --35 mm<sup>2</sup> WIRE OD=14.2 ± 0.4MM  
C42000361514 --25 mm<sup>2</sup> WIRE OD=11.9 ± 0.3MM



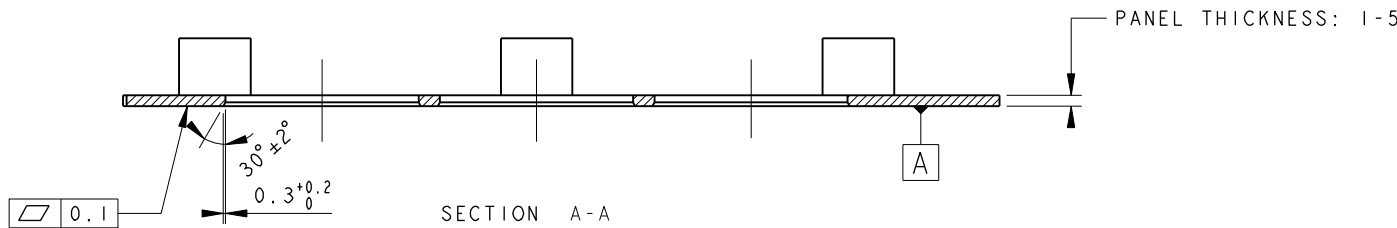
CONTACT FOR IL (INTER-LOCK) USE  
(0.5 mm<sup>2</sup> MAX. WIRE)  
P/N: C200003609



CONNECTORS MATED OUTLINE

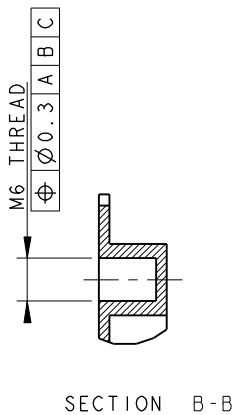
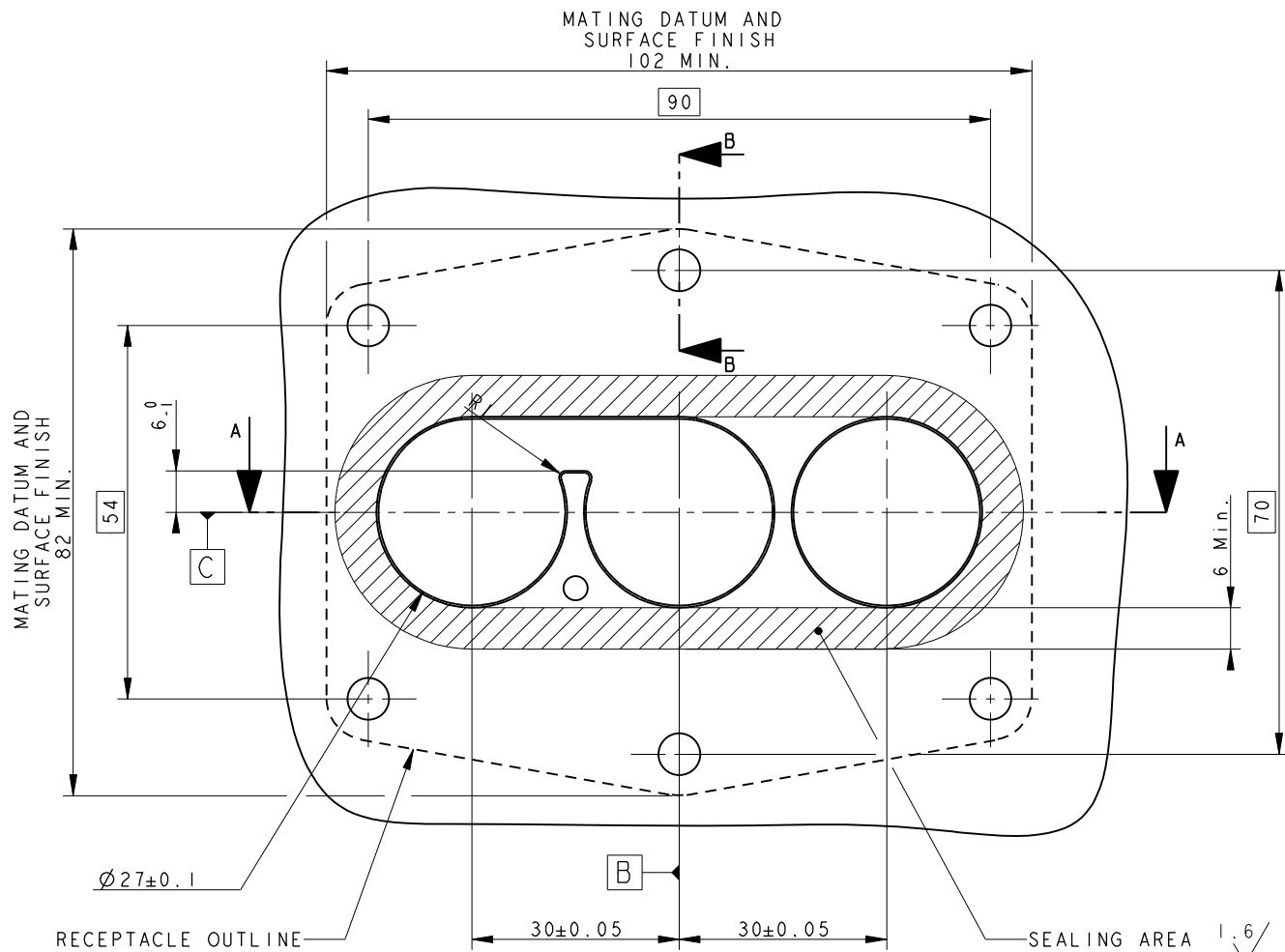
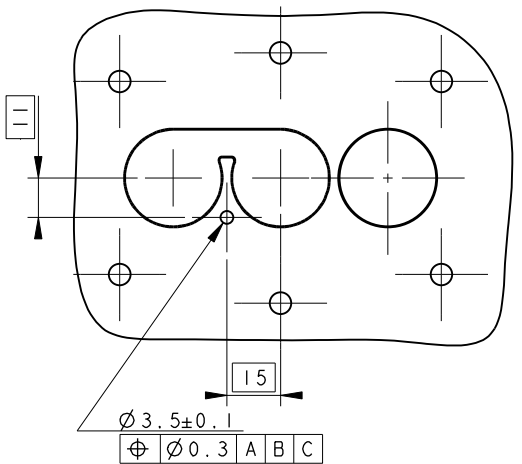
<div>DIMENSIONS</div> <div>ANSI Y14.5M</div> <div>UNITS: MM</div> <div>Pro/E FILE</div>	<div>TOLERANCES</div> <div>.X ±0.2</div> <div>.XX ±0.10</div> <div>ANGLES ±0.5°</div>	<div>PROJECTION</div> <div></div>	<div>Amphenol Pcd Shenzhen</div> <div>ENGR</div> <div>Robin Yuan15/09/15</div>	<div>TITLE</div> <div>HVSL 1000 02 3 X</div> <div>BOX MOUNTING RECEPTACLE ASSEMBLY</div>			
<div>ORIGINAL</div> <div>NOT FOR CUSTOMER DISTRIBUTION</div>	<div>THIS DOCUMENT CONTAINS PROPRIETARY INFORMATION WHICH IS THE CONFIDENTIAL PROPERTY OF AMPHENOL PCD SHENZHEN</div>	<div>CHKD</div>	<div>SIZE</div> <div>A3</div>	<div>DWG NO.</div> <div>C-HVSL1000023X</div>		<div>REV</div> <div>3</div>	
		<div>APPD</div>	CODE: 58982		SCALE: 1:1	SHEET 1 OF 2	

PANEL DRILLING



CODING A

SCALE 1:2



C-HVSL1000023X

C-HVSL1000023X

SIZE	DWG NO.	REV
A3	C-HVSL1000023X	3
CODE: 58982	SCALE: 1:1	SHEET 2 OF 2

# Mouser Electronics

Authorized Distributor

Click to View Pricing, Inventory, Delivery & Lifecycle Information:

[Amphenol:](#)

[HVSL1000023A1H8](#) [HVSL1000023A170](#) [HVSL1000023A035](#) [HVSL1000023A070](#) [HVSL1000023A0H8](#)  
[HVSL1000023A050](#) [HVSL1000023A150](#) [HVSL1000023A135](#)