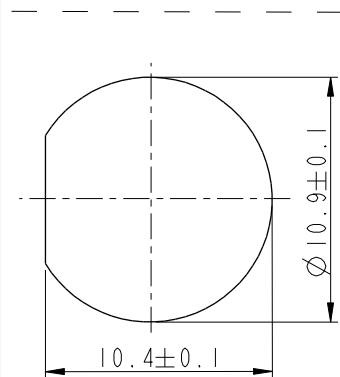
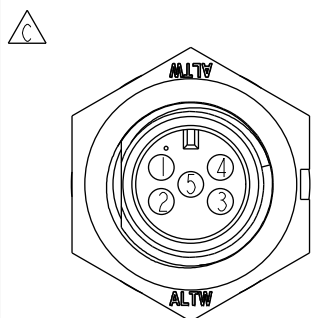


ALTW
CONFIDENTIAL
2019-02-19
R&D DEPT.

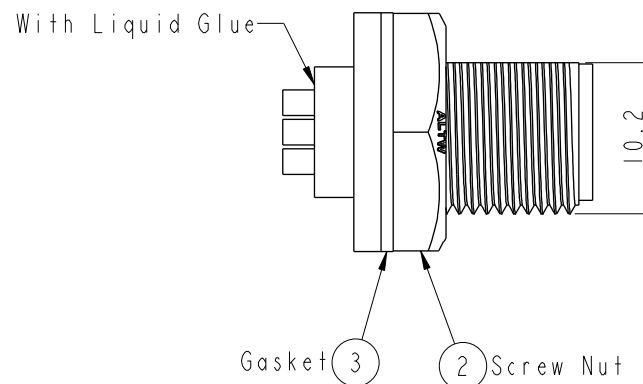
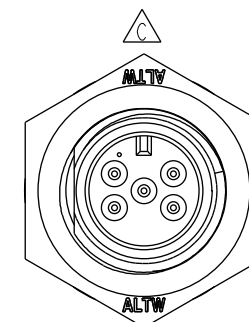
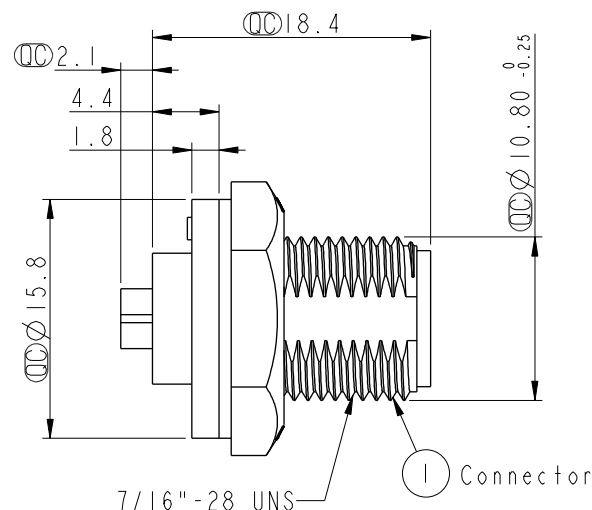
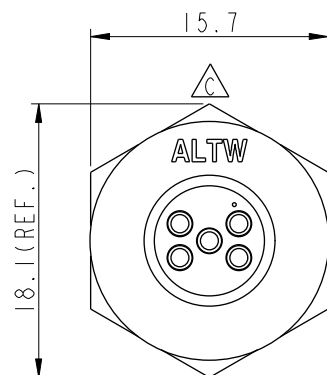
REV.	ECN NO.	DATE	SIGN	DESCRIPTION
B	LEN-8A0114	2008/09/15	Shin	Add Notes
C	LEN15A0354	2015/10/15	Jinhai	Change Logo
D	C190268	2019/02/19	Ruru	Modify Note






Recommended
Panel Cut-Out



Pin Assignments Front View



Note: $\triangle D$

- *  Important Dimension.
- * Waterproof Rate: IP67, Unmated
- * Housing: Thermoplastic, Black
- * Pin: Copper Alloy, Gold Plated
- * Nut: Thermoplastic, Black
- * Gasket: Rubber, Black
-  * Use with waterproof cap or dust cap
Panel Thickness max: 4.0mm
-  * Use without waterproof cap or dust cap
Panel Thickness max: 5.0mm
- * Gasket and Nut are packed separately
in PE bags.

UNIT : mm			
TOLERANCE			
.X	±0.25		
.XX	±0.1		
.XXX	±0.05		
ANGLES	+ °		

TITLE			
Mini Screw Type 5Pin M Conn M Pin			
SCALE	2:1	SIZE	A4
SHEET	1	OF	1
REV.	D	WC-REV.	A.2
QC: Inspection item			

Amphenol LTW
安費諾亮泰企業股份有限公司

ITEM NO	DRAWN BY	DATE
AU-05PMMS-SC7001	Ruru	2019-02-19
DWG NO	CHECKED BY	DATE
AU-05PMMS-SC7001	Rita	2019-02-19
CUSTOMER	APPROVED BY	DATE
ALTW	Max	2019-02-19

Mouser Electronics

Authorized Distributor

Click to View Pricing, Inventory, Delivery & Lifecycle Information:

[Amphenol:](#)

[AU-05PMMS-SC7001](#)